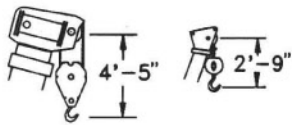


T335

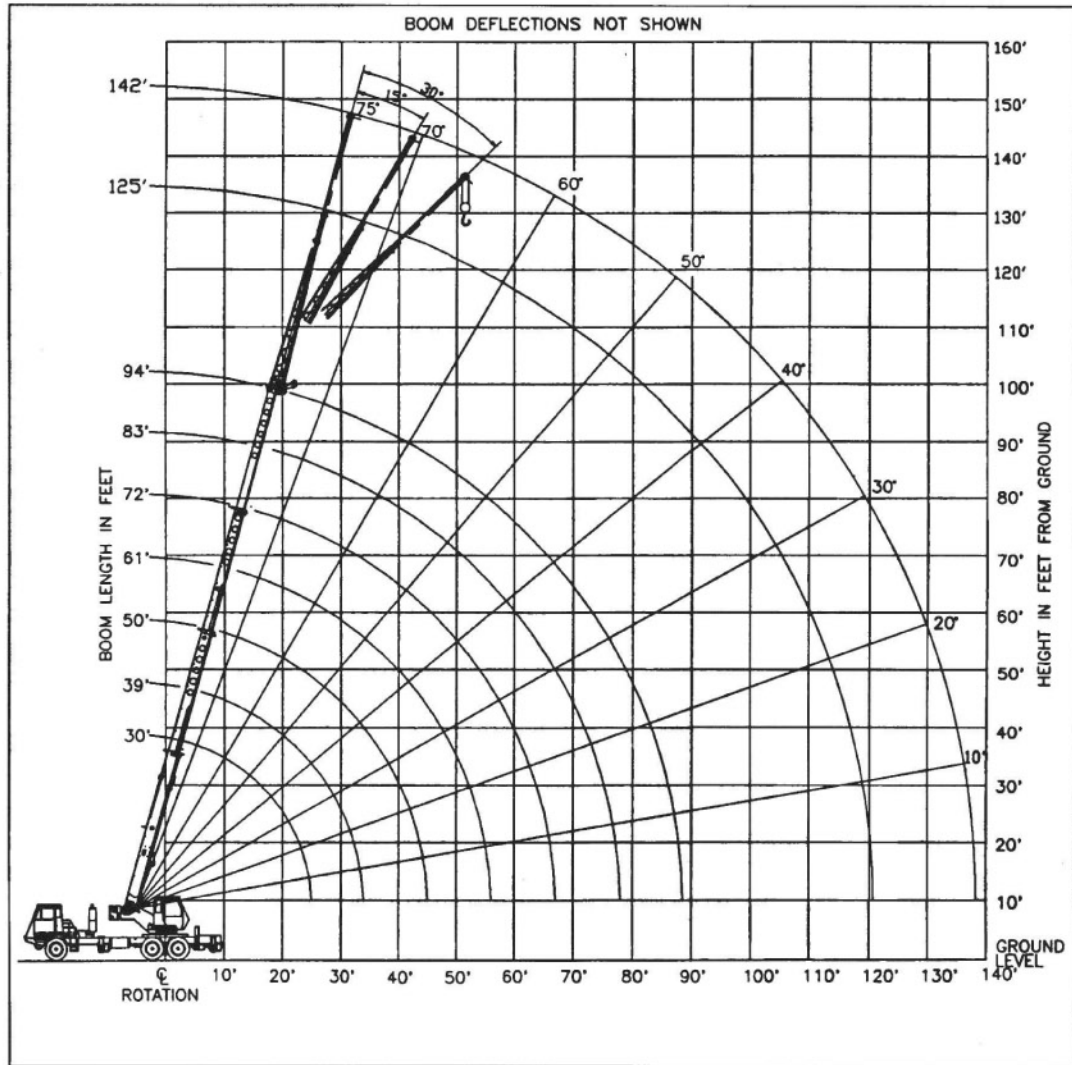
truck crane
35 ton capacity

range diagram & lifting capacities

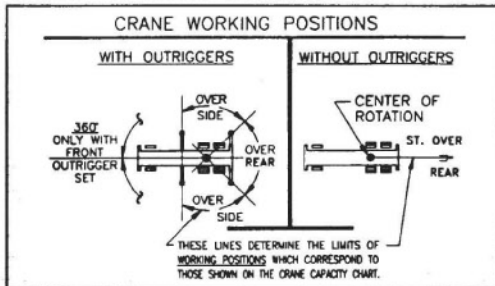


DIMENSIONS ARE FOR LARGEST FACTORY FURNISHED HOOK BLOCK AND HOOK & BALL, WITH ANTI-TWO BLOCK ACTIVATED

Range Diagram
(30' - 94' boom)



CRANE WORKING CONDITIONS



REDUCTION IN MAIN BOOM CAPACITY

All Jibs in Stowed Position _____ 0 Lbs.
Aux. Boom in Head Sheave _____ 100 Lbs.

HOOK BLOCK WEIGHTS

Hook & Ball _____ 239 Lbs.
25T Hook Block (2 Sheave) _____ 682 Lbs.
30T Hook Block (3 Sheave) _____ 670 Lbs.
40T Hook Block (4 Sheave) _____ 690 Lbs.

Lifting Capacities – Pounds (30' – 94' boom)

MODEL T335

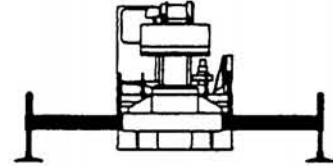
COUNTERWEIGHT:
F. BUMPER 500 LBS.
UPPERSTRUCTURE:
W/AUX. WINCH 900 LBS.
W/O AUX. WINCH 2000 LBS.

BOOM LENGTH 30-94 FT.
STABILITY PCT.
ON OUTRIGGERS 85%
ON TIRES 75%
PCSA CLASS 10-91

CAUTION: Do not use this specification sheet as a load rating chart. The format of data is not consistent with the machine chart and may be subject to change.

ON OUTRIGGERS - FULLY EXTENDED

LOAD RADIUS (FT)	BOOM LENGTH 30 FT			BOOM LENGTH 39 FT			BOOM LENGTH 50 FT			LOAD RADIUS (FT)
	LOADED BOOM ANGLE (DEG)	OVER REAR (LB)	360° (LB)	LOADED BOOM ANGLE (DEG)	OVER REAR (LB)	360° (LB)	LOADED BOOM ANGLE (DEG)	OVER REAR (LB)	360° (LB)	
10	63.0	70,000*	70,000*	69.4	46,600*	46,600*				10
12	58.5	60,000*	60,000*	66.2	46,600*	46,600*	71.7	46,600*	46,600*	12
15	51.4	46,700*	46,700*	61.2	46,600*	46,600*	68.0	44,300*	44,300*	15
20	37.4	33,300*	33,300*	52.3	34,100*	34,100*	61.6	34,600*	34,600*	20
25	13.7	23,900	21,700	42.0	24,900	22,700	54.8	25,300	23,200	25
30	**			28.8	18,000	15,600	47.3	18,400	16,200	30
35				**			38.7	14,100	11,900	35
40							27.9	11,100	9,100	40
45							7.9	8,800	7,000	45
50							**			50
55										55
60										60
65										65
70										70
75										75
80										80
85										85



**USE THESE CHARTS ONLY
WHEN ALL OUTRIGGERS
ARE FULLY EXTENDED**

ON OUTRIGGERS - FULLY EXTENDED

LOAD RADIUS (FT)	BOOM LENGTH 61 FT			BOOM LENGTH 72 FT			BOOM LENGTH 83 FT			BOOM LENGTH 94 FT			LOAD RADIUS (FT)
	LOADED BOOM ANGLE (DEG)	OVER REAR (LB)	360° (LB)	LOADED BOOM ANGLE (DEG)	OVER REAR (LB)	360° (LB)	LOADED BOOM ANGLE (DEG)	OVER REAR (LB)	360° (LB)	LOADED BOOM ANGLE (DEG)	OVER REAR (LB)	360° (LB)	
10													10
12													12
15	72.1	38,100*	38,100*										15
20	67.1	33,000*	33,000*	70.8	27,400*	27,400*							20
25	61.9	25,600	23,600	66.5	23,100*	23,100*	69.8	21,800*	21,800*	72.2	17,500*	17,500*	25
30	56.3	18,700	16,500	62.0	18,900	16,700	66.0	18,300*	16,800	69.0	15,000*	15,000*	30
35	50.4	14,400	12,200	57.4	14,500	12,400	62.2	14,700	12,500	65.7	13,000*	12,600	35
40	43.9	11,400	9,400	52.5	11,500	9,600	58.1	11,700	9,700	62.2	11,500*	9,800	40
45	36.5	9,200	7,300	47.2	9,300	7,500	53.9	9,500	7,700	58.7	9,500	7,700	45
50	27.3	7,500	5,800	41.4	7,700	6,000	49.5	7,800	6,100	55.1	7,900	6,200	50
55	13.0	6,100	4,600	34.8	6,300	4,800	44.7	6,500	4,900	51.2	6,600	5,000	55
60	**			26.9	5,300	3,800	39.5	5,400	4,000	47.2	5,500	4,100	60
65				15.5	4,300	3,000	33.6	4,500	3,200	42.8	4,600	3,300	65
70				**			26.6	3,800	2,500	38.0	3,900	2,600	70
75							17.0	3,100	2,000	32.7	3,200	2,100	75
80							**			26.4	2,700	1,600	80
85										18.1	2,200	1,200	85

** MAXIMUM CAPACITY AT 0 DEGREE BOOM ANGLE

BOOM LENGTH 30 FT			BOOM LENGTH 39 FT			BOOM LENGTH 50 FT			BOOM LENGTH 61 FT			BOOM LENGTH 72 FT			BOOM LENGTH 83 FT			BOOM LENGTH 94 FT		
LOAD RADIUS (FT)	OVER FRONT (LB)	360° (LB)	LOAD RADIUS (FT)	OVER FRONT (LB)	360° (LB)	LOAD RADIUS (FT)	OVER FRONT (LB)	360° (LB)	LOAD RADIUS (FT)	OVER FRONT (LB)	360° (LB)	LOAD RADIUS (FT)	OVER FRONT (LB)	360° (LB)	LOAD RADIUS (FT)	OVER FRONT (LB)	360° (LB)	LOAD RADIUS (FT)	OVER FRONT (LB)	360° (LB)
25.6	22,700	20,400	34.3	13,800	11,700	45.3	8,600	6,800	56.3	5,700	4,200	67.3	3,900	2,700	78.3	2,700	1,600	89.3	1,800	800

Lifting Capacities – Pounds (30' – 94' boom)

MODEL T335.

COUNTERWEIGHT: F. BUMPER 500 LBS.
UPPERSTRUCTURE: W/AUX. WINCH 900 LBS.
W/O AUX. WINCH 2000 LBS.

BOOM LENGTH 30-94 FT.
STABILITY PCT. ON OUTRIGGERS 85%
ON TIRES 75%
PCSA CLASS 10-91

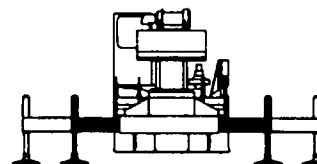
CAUTION: Do not use this specification sheet as a load rating chart. The format of data is not consistent with the machine chart and may be subject to change.

ON OUTRIGGERS - MID POSITION

LOAD RADIUS (FT)	BOOM LENGTH 30 FT		BOOM LENGTH 39 FT		BOOM LENGTH 50 FT		BOOM LENGTH 61 FT		BOOM LENGTH 72 FT		BOOM LENGTH 83 FT		BOOM LENGTH 94 FT		LOAD RADIUS (FT)
	LOADED BOOM ANGLE (DEG)	360° (LB)	LOADED BOOM ANGLE (DEG)	360° (LB)	LOADED BOOM ANGLE (DEG)	360° (LB)	LOADED BOOM ANGLE (DEG)	360° (LB)	LOADED BOOM ANGLE (DEG)	360° (LB)	LOADED BOOM ANGLE (DEG)	360° (LB)	LOADED BOOM ANGLE (DEG)	360° (LB)	
10	63.0	65,900*	69.4	46,600*											10
12	58.5	50,200	66.2	46,600*	71.7	46,600*									12
15	51.4	29,600	61.2	30,400	68.0	31,000	72.1	31,300							15
20	37.4	16,000	52.3	16,700	61.6	17,200	67.1	17,500	70.8	17,700					20
25	13.7	9,600	42.0	10,600	54.8	11,000	61.9	11,300	66.5	11,500	69.8	11,600	72.2	11,700	25
30	**		28.8	7,000	47.3	7,500	56.3	7,800	62.0	7,900	66.0	8,000	69.0	8,100	30
35			**		38.7	5,200	50.4	5,500	57.4	5,600	62.2	5,800	65.7	5,800	35
40					27.9	3,600	43.9	3,900	52.5	4,000	58.1	4,200	62.2	4,200	40
45					7.9	2,200	36.5	2,700	47.2	2,900	53.9	3,000	58.7	3,100	45
50					**		27.3	1,700	41.4	1,900	49.5	2,100	55.1	2,200	50

** MAXIMUM CAPACITY AT 0 DEGREE BOOM ANGLE

BOOM LENGTH 30 FT		BOOM LENGTH 39 FT		BOOM LENGTH 50 FT		BOOM LENGTH 61 FT		BOOM LENGTH 72 FT		BOOM LENGTH 83 FT		BOOM LENGTH 94 FT	
LOAD RADIUS (FT)	360° (LB)	LOAD RADIUS (FT)	360° (LB)	LOAD RADIUS (FT)	360° (LB)	LOAD RADIUS (FT)	360° (LB)	LOAD RADIUS (FT)	360° (LB)	LOAD RADIUS (FT)	360° (LB)	LOAD RADIUS (FT)	360° (LB)
25.6	8,900	34.3	4,700	45.3	2,100								



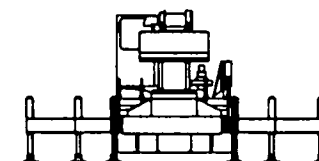
USE THESE CHARTS ONLY WHEN ALL OUTRIGGERS ARE PINNED IN MID POSITION

ON OUTRIGGERS - RETRACTED

LOAD RADIUS (FT)	BOOM LENGTH 30 FT		BOOM LENGTH 39 FT		BOOM LENGTH 50 FT		BOOM LENGTH 61 FT		BOOM LENGTH 72 FT		BOOM LENGTH 83 FT		BOOM LENGTH 94 FT		LOAD RADIUS (FT)
	LOADED BOOM ANGLE (DEG)	360° (LB)	LOADED BOOM ANGLE (DEG)	360° (LB)	LOADED BOOM ANGLE (DEG)	360° (LB)	LOADED BOOM ANGLE (DEG)	360° (LB)	LOADED BOOM ANGLE (DEG)	360° (LB)	LOADED BOOM ANGLE (DEG)	360° (LB)	LOADED BOOM ANGLE (DEG)	360° (LB)	
10	63.0	20,900	69.4	21,600											10
12	58.5	14,800	66.2	15,400	71.7	15,900									12
15	51.4	9,700	61.2	10,300	68.0	10,700	72.1	10,900							15
20	37.4	5,100	52.3	5,800	61.6	6,200	67.1	6,400	70.8	6,600					20
25	13.7	2,500	42.0	3,400	54.8	3,800	61.9	4,100	66.5	4,200	69.8	4,300	72.2	4,400	25
30	**		28.8	1,800	47.3	2,300	56.3	2,600	62.0	2,700	66.0	2,800	69.0	2,900	30
35			**		38.7	1,200	50.4	1,600	57.4	1,700	62.2	1,800	65.7	1,900	35
40							43.9	800	52.5	1,000	58.1	1,100	62.2	1,200	40
45													58.7	600	45

** MAXIMUM CAPACITY AT 0 DEGREE BOOM ANGLE

BOOM LENGTH 30 FT		BOOM LENGTH 39 FT		BOOM LENGTH 50 FT		BOOM LENGTH 61 FT		BOOM LENGTH 72 FT		BOOM LENGTH 83 FT		BOOM LENGTH 94 FT	
LOAD RADIUS (FT)	360° (LB)	LOAD RADIUS (FT)	360° (LB)	LOAD RADIUS (FT)	360° (LB)	LOAD RADIUS (FT)	360° (LB)	LOAD RADIUS (FT)	360° (LB)	LOAD RADIUS (FT)	360° (LB)	LOAD RADIUS (FT)	360° (LB)
25.6	2,100	34.3	700										



USE THESE CHARTS WHEN ALL OUTRIGGER BEAMS ARE NOT IN EITHER THE MID OR FULLY EXTENDED POSITION

Lifting Capacities – Pounds (30’ – 94’ boom)

MODEL T335

COUNTERWEIGHT:
F. BUMPER 500 LBS.
UPPERSTRUCTURE:
W/AUX. WINCH 900 LBS.
W/O AUX. WINCH 2000 LBS.

BOOM LENGTH 30-94 FT.
STABILITY PCT.
ON OUTRIGGERS 85%
ON TIRES 75%
PCSA CLASS 10-91

CAUTION: Do not use this specification sheet as a load rating chart. The format of data is not consistent with the machine chart and may be subject to change.

SIDE STOW JIB ON FULLY EXTENDED OUTRIGGERS

LOADED BOOM ANGLE (DEG)	32 FT OFFSETABLE JIB									49 FT OFFSETABLE JIB									LOADED BOOM ANGLE (DEG)
	0° OFFSET			15° OFFSET			30° OFFSET			0° OFFSET			15° OFFSET			30° OFFSET			
	LOAD RADIUS (REF) (FT)	REAR ONLY (LB)	360° (LB)	LOAD RADIUS (REF) (FT)	REAR ONLY (LB)	360° (LB)	LOAD RADIUS (REF) (FT)	REAR ONLY (LB)	360° (LB)	LOAD RADIUS (REF) (FT)	REAR ONLY (LB)	360° (LB)	LOAD RADIUS (REF) (FT)	REAR ONLY (LB)	360° (LB)	LOAD RADIUS (REF) (FT)	REAR ONLY (LB)	360° (LB)	
75	38	9,100*	9,100*	46	7,700*	7,500	52	5,900*	5,600	41	5,100*	5,100*	55	3,400*	3,400*	62	2,700*	2,700*	75
73	42	8,600*	8,600*	49	7,300*	6,600	55	5,800*	4,900	47	4,800*	4,800*	59	3,300*	3,300*	68	2,700*	2,700*	73
71	45	8,200*	8,200*	52	7,000*	5,800	58	5,600*	4,200	52	4,500*	4,500*	64	3,200*	3,200*	73	2,600*	2,600*	71
68	50	7,300	6,000	58	6,200*	4,500	63	5,100*	3,300	60	4,100*	4,100*	70	3,000*	3,000*	79	2,500*	2,500*	68
65	56	6,000	4,800	63	5,400*	3,600	68	4,600*	2,600	66	3,800*	3,800*	76	2,900*	2,900*	84	2,500*	2,500*	65
62	61	5,000	3,900	68	4,400	2,700	73	4,100	2,000	71	3,600*	3,100	81	2,800*	2,600	88	2,400*	2,400*	62
59	66	4,200	3,200	73	3,600	1,900	77	3,500	1,500	77	3,400*	2,500	86	2,700*	2,100	93	2,400*	1,900	59
55	73	3,400	2,400	79	3,000	1,000	83	2,900	900	84	2,800	1,900	93	2,500	1,500	99	2,300*	1,300	55
51	79	2,800	1,700	85	2,400		88	2,400		91	2,200	1,400	99	2,000	1,100	105	1,900	800	51
47	86	2,300	1,200	91	2,000		94	1,900		100	1,800	900	106	1,600	700	110	1,500	600	47
43	92	1,900	800	97	1,600		99	1,500		109	1,400		112	1,200		116	1,200		43
38	100	1,400		103	1,100		105	1,100		116	1,000		119	900		122	800		38
32	106	900		109	800		110	800											32

NOTES FOR JIB CAPACITIES

- A. For all boom lengths less than the maximum with a jib erected, the rated loads are determined by boom angle only in the appropriate column.
- B. For boom angle not shown, use the capacity of the next lower boom angle.
- C. Listed radii are for extended main boom only.

ON TIRES

RADIUS (FT)	MAX BOOM LENGTH (FT)	BOOM STRAIGHT OVER REAR 0 TO 2 1/2 MPH
10	30	14,900
12	30	11,700
15	39	8,400
20	39	5,200
25	50	3,000
30	50	1,700

NOTES FOR ON TIRE CAPACITIES

- A. For Pick and Carry operations, boom must be centered over the rear of the crane with swing brake and lock engaged. Use minimum boom point height and keep load close to ground surface.
- B. The load should be restrained from swinging. NO ON TIRE OPERATION WITH JIB ERECTED.
- C. Without outriggers, never maneuver the boom beyond listed load radii for applicable tires to ensure stability.
- D. Creep speed is crane movement of less than 200 Ft. (61m) in a 30 minute period and not exceeding 1.0 mph (1.6 km/h).
- E. Refer to General Notes for additional information.

MAXIMUM PERMISSIBLE HOIST LINE LOAD

LINE PARTS	1	2	3	4	5	6	7	8	9	10
MAX. LOAD	9,080	18,160	27,240	36,320	45,400	54,480	63,560	72,640	81,720	90,800
BOOM HEAD	2	3-D	2-3	1-4-D	2-3-4	2-3-4-D	1-2-3-4	1-2-3-4-D	1-2-3-4-5	1-2-3-4-5-D
HOOK BLOCK	D	3	3-D	1-4	2-3-D	2-3-4	2-3-4-D	1-2-3-4	1-2-3-4-D	1-2-3-4-5
WIRE ROPE: 5/8" ROTATION RESISTANT COMPACTED STRAND, 18X19 OR 19X19 MINIMUM BREAKING STRENGTH - 22.7 TONS 5/8" 6X19 OR 6X37 IWRC IPS PREFORMED RIGHT REGULAR LAY MINIMUM BREAKING STRENGTH - 17.9 TONS										