

Mobile Crane/Grue mobile

LTM 1160-5.2



190 t (us)



203 ft



256 ft



325 ft



LIEBHERR

Mobile Crane/Grue mobile

LTM 1160-5.2



203 ft



35 ft – 131 ft



3 x 23 ft

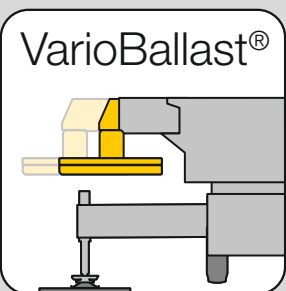
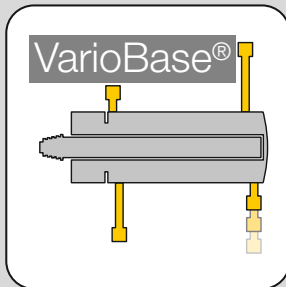


9 ft



119000 lbs

VarioBallast ballast radius
15.7 ft – 17.4 ft



Crane carrier

Frame	Self-manufactured, weight-optimized and torsion resistant box-type design of high-tensile structural steel.
Outriggers	4-point supporting system, hydraulically telescopic into horizontal and vertical direction. Automatic levelling of crane. Electronic inclination indicator.
Engine	6-cylinder Diesel, make Liebherr, watercooled, output 400 kW (544 h.p.), max. torque 1855 lbs-ft. Exhaust emissions acc. to (EU) 2016/1628, EPA/CARB or ECE-R.96. Fuel reservoir: 198 gallons.
Transmission	ZF 12-speed gear box with automatic control system. ZF-intarder fitted directly to the gear. Two-stage transfer case with lockable transfer differential.
Axles	Low maintenance carrier axles, all 5 axles steered. Axle 2, 4 and 5 are equipped with planetary gears, all driven axles with transverse differential locks, axle 4 with longitudinal differential lock.
Suspension	All axles are mounted on hydropneumatic suspension – “Niveau-matik suspension” and are lockable hydraulically.
Tyres	10 tyres. Size of tyres: 445/95 R 25 (16.00 R 25).
Steering	2-circuit system with hydraulic servo steering. Active speed depending rear axle steering, special steering programs for various driving situations.
Brakes	Service brake: all-wheel servo-air brake, all axles are equipped with disc brakes, dual circuit. Additional brakes: exhaust flap brake, Telma Eddy current brake (optional), intarder in gearbox. Hand brake: Spring-loaded, acting on all wheels of axles 2 to 5.
Driver's cab	Spacious corrosion resistant with comfort furnishings, mounted on rubber shock absorbers, safety glazing.
Electrical system	Modern data bus technique, 24 Volt DC, 2 batteries of 170 Ah each.

Crane superstructure

Frame	Liebherr-manufactured, torsionally rigid steel construction made from high-tensile fine-grain steel. Triple-roller slewing rim.
Crane drive	Mechanical drive of the crane hydraulic from the chassis. Variable axial piston pumps with servo control and power regulation.
Control	Electric „Load Sensing“ control, simultaneous operation of 4 working motions, 2 self-centering hand control levers (joy-stick type).
Hoist gear	Axial piston fixed displacement motor, Liebherr hoist drum with integrated planetary gear and spring-loaded static brake.
Luffing gear	1 differential ram with pilot-controlled brake valve.
Slewing gear	Axial piston fixed displacement motor, planetary gear, spring-loaded static brake. Slewing gear inversible from released to locked as standard feature.
Crane cab	Large screen area, compound glass, comfort furnishing, cabin tiltable 20° to rear.
Safety devices	LICCON2 safe load indicator, test system, hoist limit switch, safety valves to prevent pipe and hose ruptures.
Telescopic boom	1 base section and 5 telescopic sections. All telescopic sections extendable individually by means of the rapid-cycle telescoping system TELEMATIK. Boom length 43 ft to 203 ft.
Counterweight	74920 lbs basic counterweight.
Electrical system	Modern data bus technique, 24 Volt DC.

The pictures contain also accessories and special equipment not included in the standard scope of delivery.

Operating modes

K	Special swing-away jib 9.5 ft Double swing-away jib 35 ft – 131 ft Adjustment 0°, 20°, 40°
NZK	Hydraulically adjustable swing-away jib 35 ft – 131 ft Hydraulically adjustment 0° – 40°
V	Telescopic boom extension 3 x 23 ft

Additional equipment

2nd hoist gear	For two-hook operation.
Tyres	10 tyres, size 525/80 R 25 (20.5 R 25).
Drive 10 x 8	Additional drive of the 1 st axle.
Additional counterweight	44080 lbs for a total counterweight of 119000 lbs.

Other items of equipment available on request.

Description of symbols Explication des symboles

General symbols/Symboles généraux



Outriggers
Calage



Axle
Essieu



Radius
Portée



Boom length
Longueur de la flèche



Boom position
Position de la flèche



Counterweight
Contrepoids



Counterweight radius
Rayon de contrepoids



Tyres
Pneumatiques



Slewing gear / Working area
Mécanisme d'orientation / Plage de travail



Standard
Norme



Driving speed
Vitesse de translation



Driving speed – Onroad gear
Vitesse de translation – Vitesse de route



Driving speed – Crawl speed
Vitesse de translation – Marche lente



Transmission
Boîte de vitesse



Gear
Vitesse



Hookblock / Capacity
Moufle à crochet / Capacité de charge



Hoist gear
Treuil de levage



Crane carrier
Châssis porteur



Crane superstructure
Partie tournante de la grue



Gradability
Aptitude à graver les pentes

Crane specific symbols/Symboles spécifiques à la grue



Telescopic boom
Flèche télescopique



Telescopic boom extension
Rallonge flèche télescopique



Assembly jib
Fléchette de montage



Hydraulic swing away jib
Fléchette pliante hydraulique

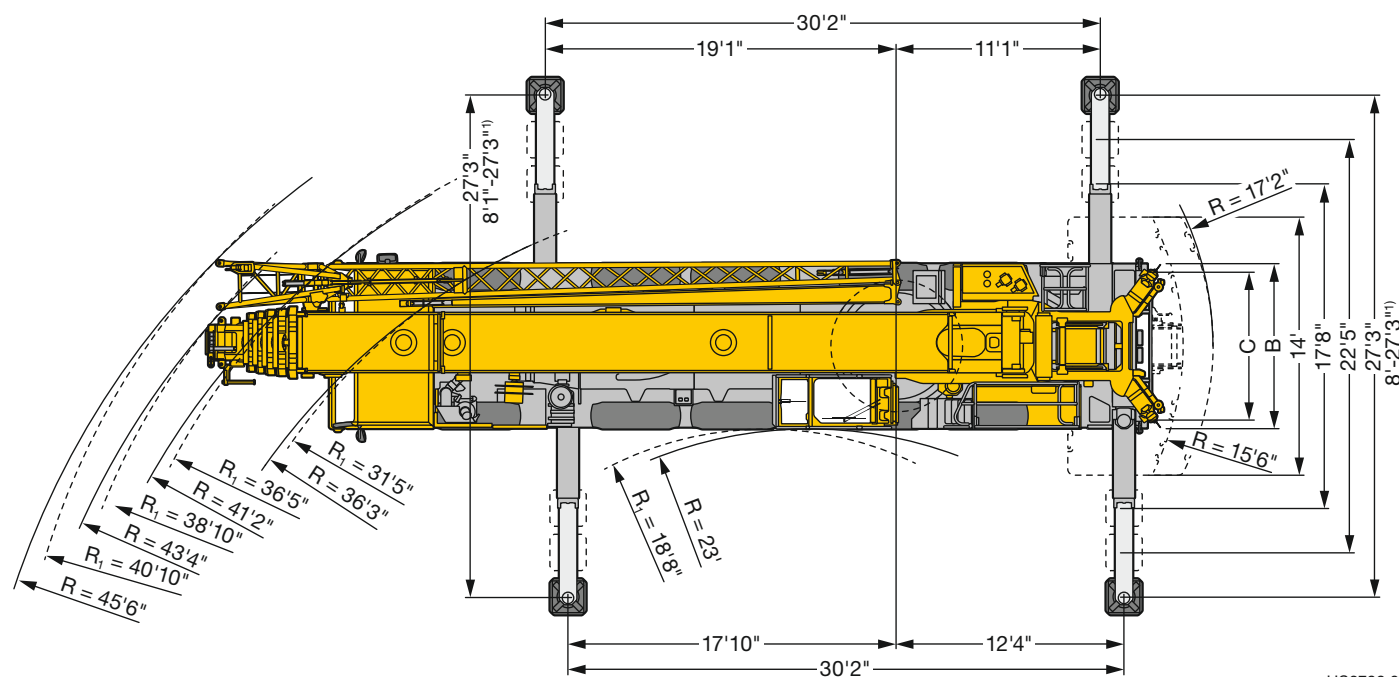
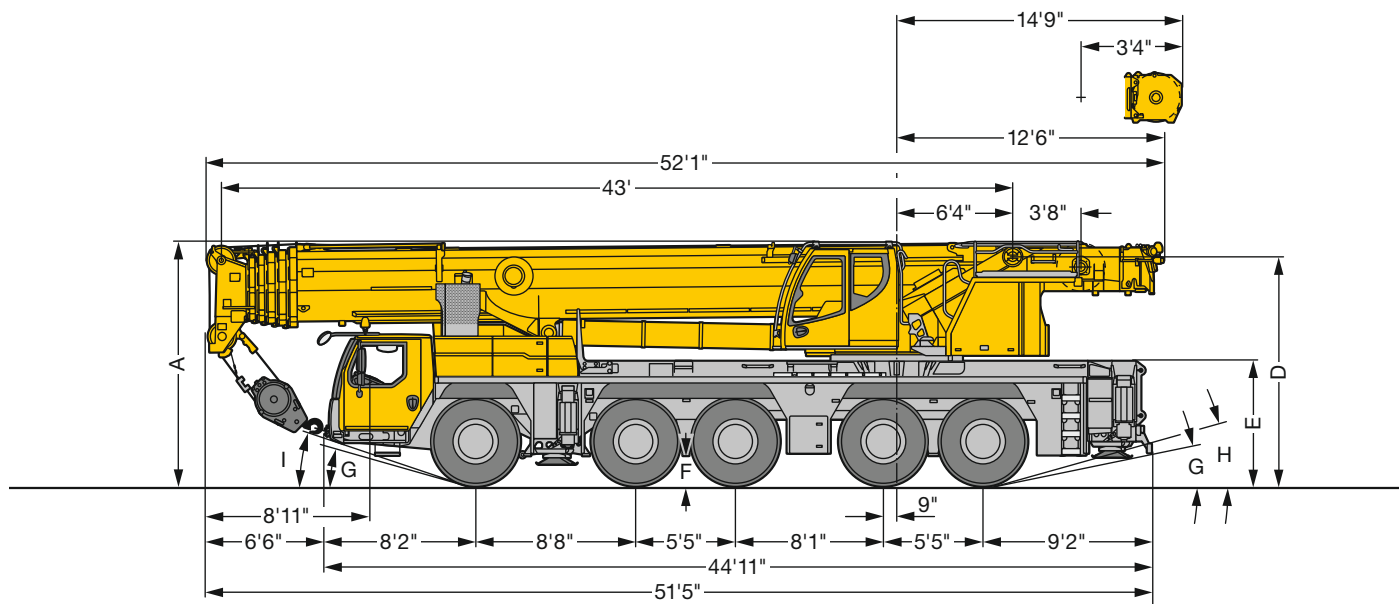
Remarks

1. The lifting capacities do not exceed 85 % of the tipping load according to ASME B 30.5. The crane's structural steelwork is in accordance with EN 13000 and ASME B 30.5.
2. For the calculation of the load charts at least a wind speed of 30 ft/s (9 m/s, 20 mph) and regarding the load a sail area of 1 m² per ton load and a wind resistance coefficient of 1.2 on the load have been taken into account. For lifting of loads with large sail areas and/or high wind resistance coefficients the maximum wind speed as stated in the load charts has to be reduced.
3. The lifting capacities stated are valid for lifting operation only (corresponding with crane classification according to ISO 4301-1, crane group A1).
4. Lifting capacities are given in kips.
5. The weight of the hook blocks and hooks must be deducted from the lifting capacities.
6. Working radii are measured from the slewing centre.
7. The stated lengths of the telescopic boom are maximum values and may deviate slightly.
8. The lifting capacities given for the telescopic boom apply if the folding jib is removed.
9. Subject to modification of lifting capacities.
10. Lifting capacities above 189600 lbs/321900 lbs only with additional pulley block/special equipment.
11. The data of this brochure serves only for general information. All information is provided without warranty. Instructions for the correct commissioning of the crane please take from the operation manual and the load chart book.

Remarques

1. La capacité de charge ne doit pas dépasser 85 % de la charge de basculement conformément à ASME B 30.5. La structure métallique de la grue est conforme à EN 13000 et ASME B 30.5.
2. Une vitesse de vent de 30 ft/s (9 m/s, 20 mph) minimum, une surface de prise au vent de 1 m² par tonne ainsi qu'un coefficient de résistance au vent de la charge 1,2 sont pris en compte pour le calcul des tableaux de charge. Lorsque des charges ayant une surface de prise au vent et/ou un coefficient de résistance au vent plus élevé(e)(s) sont levées, la vitesse de vent maximale indiquée dans les tableaux de charge doit être réduite.
3. Forces de levage pour application de grue de montage (correspond à la classification de grues selon ISO 4301-1, groupe de grues A1).
4. Les forces de levage sont données en kips.
5. Les poids des mouffes et crochets doit être soustrait des charges indiquées.
6. Les portées sont calculées à partir de l'axe de rotation.
7. Les longueurs indiquées pour la flèche télescopique sont des valeurs maximales et peuvent légèrement varier dans la réalité.
8. Les charges indiquées pour la flèche télescopique sont valables lorsque la fléchette pliante est démontée.
9. Charges données sous réserve de modification.
10. Forces de levage plus de 189600 lbs/321900 lbs seulement avec moufle additionnel/équipement supplémentaire.
11. Les données de cette brochure sont données à titre informatif. Ces renseignements sont sans garantie. Les consignes relatives à la bonne mise en service de la grue sont disponibles dans le manuel d'utilisation et le manuel de tableaux de charge.

Dimensions Encombremment



US2788.02

R₁ = All-wheel steering · Direction toutes roues ¹⁾ only with VarioBase® · seulement avec VarioBase®

Dimensions/Encombremment

	A	A 4" *	B	C	D	E	F	G	H	I
445/95 R 25 (16.00 R 25)	13'1"	12'10"	9'	7'7"	12'4"	6'9"	1'5"	11°	15°	18°
525/80 R 25 (20.5 R 25)	13'1"	12'10"	9'4"	7'7"	12'4"	6'9"	1'5"	11°	15°	18°

* lowered · abaissé

VarioBallast

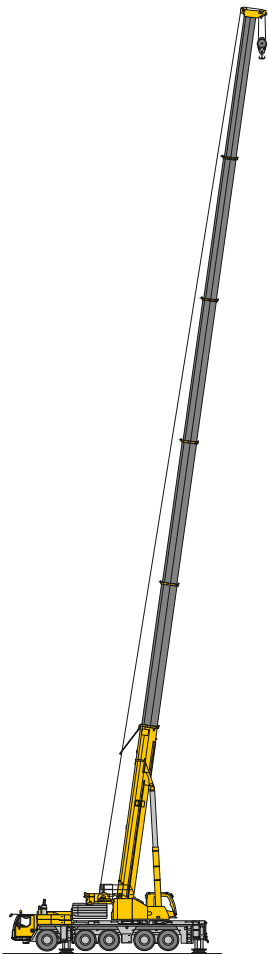


VarioBallast



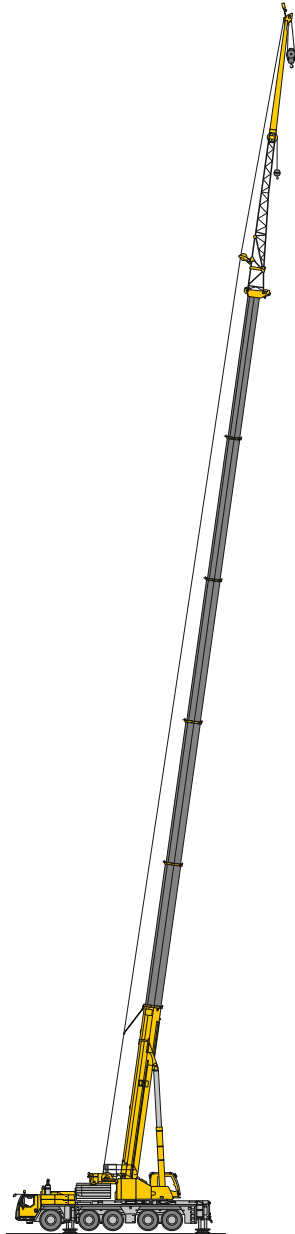
Boom/jib combinations Configurations de flèche

- T** Telescopic boom/Flèche télescopique
- K** Assembly jib/Flechette de montage
- NZK** Hydraulic swing away jib/Fléchette pliante hydraulique
- V** Telescopic boom extension/Rallonge de flèche télescopique



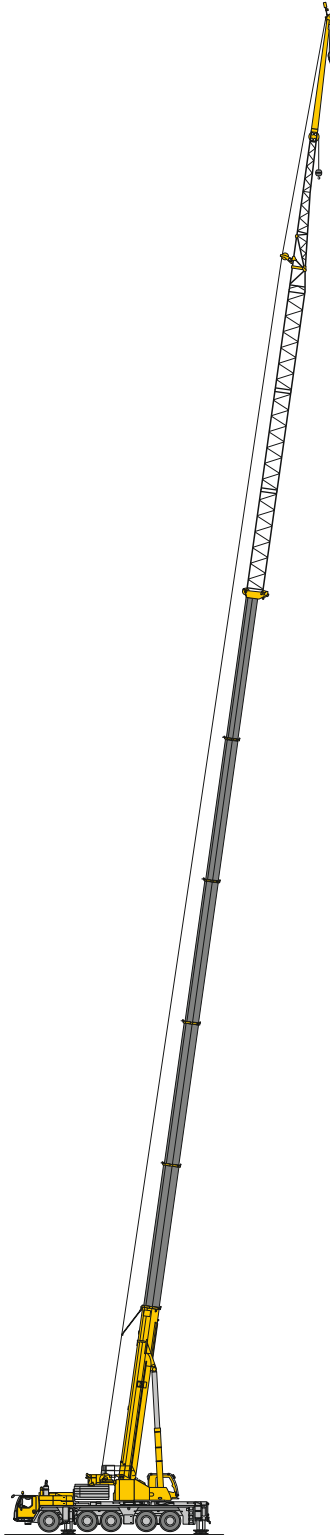
T

12 – 30



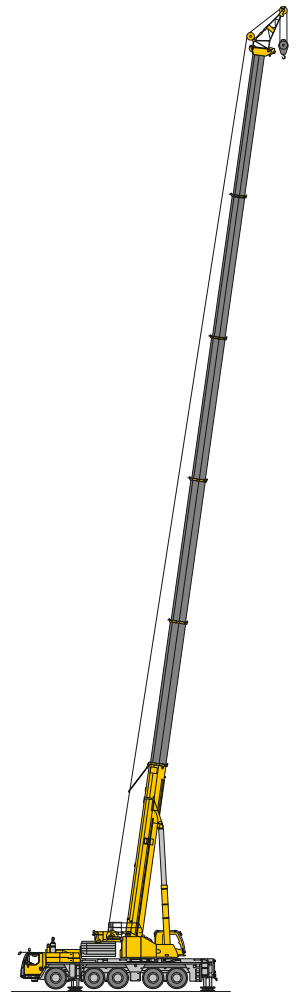
TK/TNZK

31 – 39



TVK/TVNZK

40 – 66



TK

67 – 69

S2911



Hook block/Moufles à crochet

Load kips Forces de levage kips	No. of sheaves Poulies	No. of lines Brins	Weight lbs Poids lbs
321.9	9	18	2910
189.6	5	10	2870/1980
135.8	3	7	1540
60	1	3	1430
20.3	–	1	770

Working speeds Vitesses

Crane carrier/Châssis porteur

	(mph) min.	(mph) max.	%
445/95 R 25 (16.00 R 25) 525/80 R 25 (20.5 R 25)	0.3	53	55.7 %

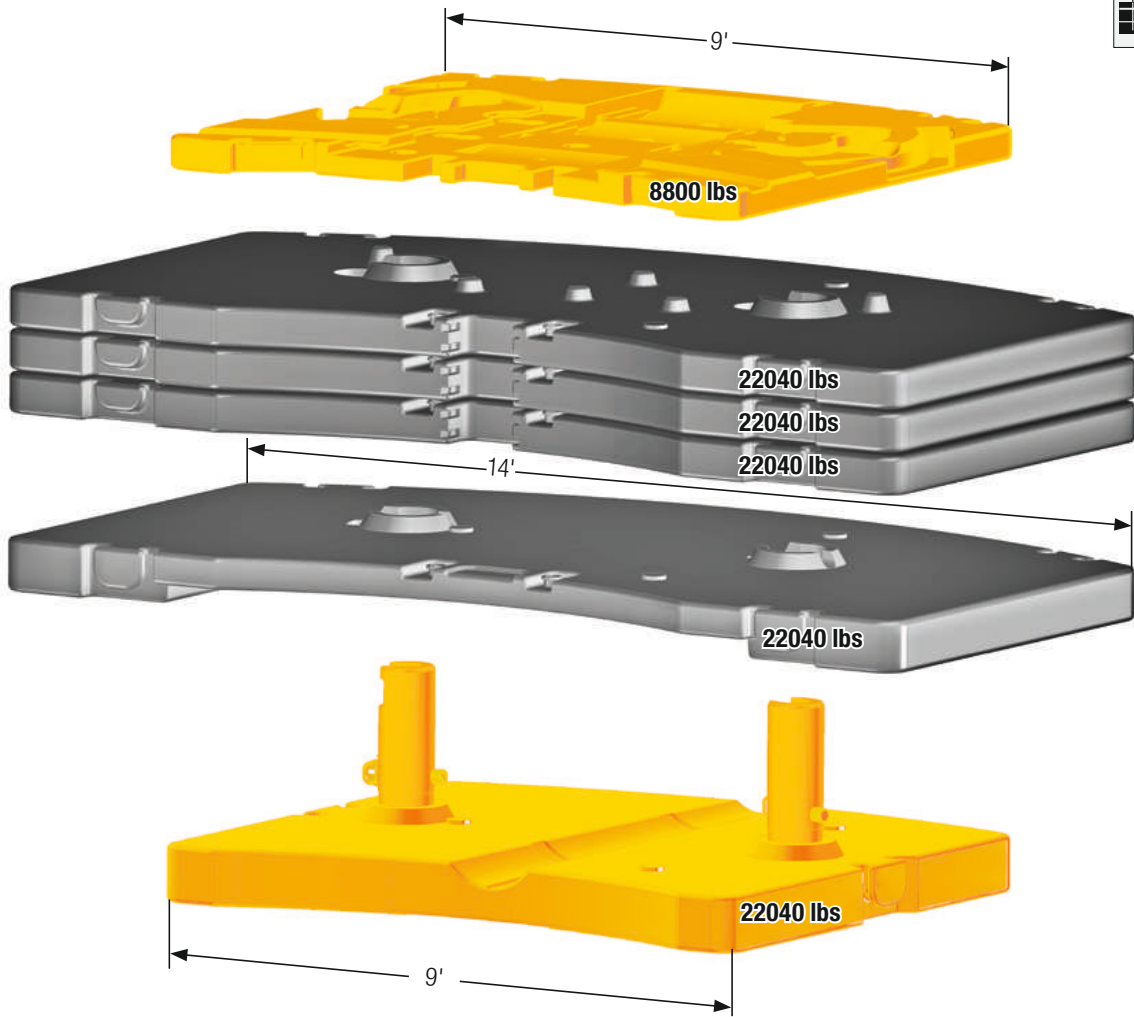
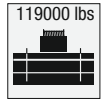
Theoretical gradeability/Aptitude théorique en pente

	12 / R2
	4 / R2

Crane superstructure/Partie tournante

Drive Mécanismes	infinitely variable en continu	Rope diameter / length Diamètre / Longueur du câble	Max. single line pull Effort au brin maxi.
	0 – 440 ft/min single line ft/min au brin simple	0.83" / 968 ft	20600 lbs
	0 – 440 ft/min single line ft/min au brin simple	0.83" / 968 ft	20600 lbs
	0 – 1.2 rpm		
	approx. 65 seconds to reach 82° boom angle env. 65 s jusqu'à 82°		
	approx. 400 seconds for boom extension from 43 ft – 203 ft env. 400 s pour passer de 43 ft – 203 ft		

Counterweight Contrepoids

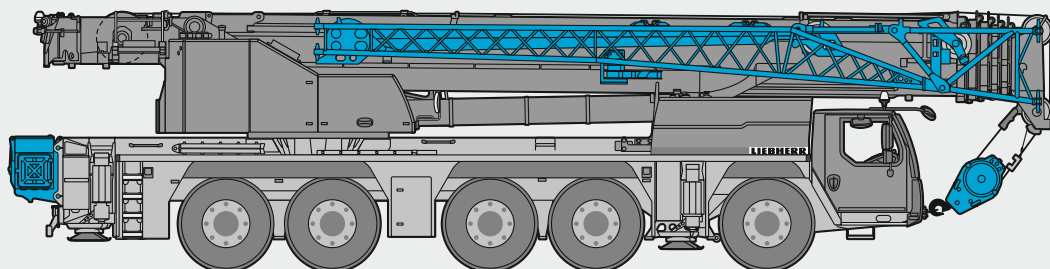


Technically transportable - Transport techniquement simplifié

Axle/Essieu

Axle Essieu	1	2	3	4	5	Total weight lbs Poids total lbs
lbs	26400	26400	26400	26400	26400	132000 ¹⁾

¹⁾ with double swing away jib, 3-sheave hook block, 2205 lbs lifting tackle - avec fléchette pliante double, moufle à crochet à trois poulies, accessoires de levage de 2205 lbs



S2964

Lifting capacities Forces de levage



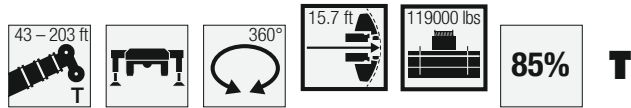
85%

T

	43 ft	57 ft	72 ft	87 ft	102 ft	116 ft	131 ft	146 ft	161 ft	176 ft	191 ft	203 ft	
10	189.6	189.6	189.6										10
11	189.6	189.6	189.6	189.6									11
12	189.6	189.6	189.6	189.6									12
13	189.6	189.6	189.6	189.6									13
14	189.6	189.6	189.6	189.6									14
15	189.6	189.6	189.6	189.6	166.6								15
16	189.6	189.6	189.6	189.6	165.4								16
17	189.6	189.6	189.6	189.6	164.2								17
18	189.6	189.6	189.6	189.6	163	131.3							18
19	189.6	189.6	189.6	189.6	161.8	130							19
20	189.6	189.6	189.6	189.6	160.6	128.7							20
22	186.9	185.8	187.3	182.7	158.1	126.1	94.6						22
24	171.9	172.7	172.6	171.8	155.2	123.5	91.3	74.7					24
26	158.3	160.1	160.5	160	152.3	120.9	88	73.3					26
28	146.5	148.4	149	148.5	146.7	118.4	84.7	71.4	59.3				28
30	136.2	138.1	138.7	137.9	136.9	115.9	81.6	69.4	58.2				30
32	127.2	129	129.6	129	127.8	113.5	78.9	67.5	56.9	48.8			32
34	119.2	121	121.5	121	120.1	111	76.4	65.5	55.7	47.9			34
36	106.3	113.8	114.3	113.8	112.8	108.5	73.9	63.6	54.4	47	37.7		36
38		107.3	107.9	107.2	106.3	105.4	71.4	61.8	53.2	46.1	37.3	30.3	38
40		101.6	102	101.5	101.4	101.2	69.1	60.1	51.9	45.2	36.7	30	40
45		89.2	89.6	89.1	90.5	89.4	63.9	55.6	48.6	43	35.4	29	45
50		77.5	79.7	79.5	80.6	79.1	58.9	52	45.3	41	34.2	28	50
55			69.5	71.5	70.7	69.3	54.7	48.5	42.6	39.2	32.9	26.9	55
60			61	62.9	62.1	60.8	50.7	45.3	40	37.3	31.5	25.8	60
65			54.7	55.9	55.1	53.8	47.5	42.5	37.6	35.3	30.3	24.8	65
70				50.2	49.3	48.1	44.5	39.7	35.5	33.4	29	23.8	70
75				45.4	44.5	43.2	42.1	37.3	33.4	31.6	27.8	22.7	75
80				38.9	40.4	39.1	39.6	35.1	31.5	29.9	26.6	21.7	80
85					36.9	35.5	36.3	33.1	29.7	28.3	25.4	20.7	85
90					34	33.2	33.2	31.2	28.1	26.8	24.3	19.6	90
95					28.7	31.7	30.5	29.3	26.6	25.4	23.2	18.6	95
100						29.9	28	27.9	25.1	24	22.1	17.7	100
105						27.7	25.9	26	23.8	22.8	21	16.7	105
110						20.7	24	24.1	22.6	21.7	20	15.9	110
115							22.6	22.3	21.3	20.6	19.1	15	115
120							21.8	20.8	20	19.6	18.2	14.2	120
125							14.2	19.3	19.1	18.3	17.3	13.5	125
130								17.9	18.1	17.2	16.6	12.8	130
135								16.7	16.8	16.5	15.8	12.1	135
140									15.6	15.8	15	11.6	140
145									14.5	15	14	11.1	145
150									13.5	14	12.9	10.6	150
155										13	12	10.1	155
160										12.2	11.1	9.7	160
165										11.4	10.3	9.3	165
170											9.5	8.9	170
175											8.8	8.5	175
180											8.2	8.1	180
185												7.5	185
190												6.9	190
195												6.3	195

t_253_001_00089_00_000

Lifting capacities Forces de levage



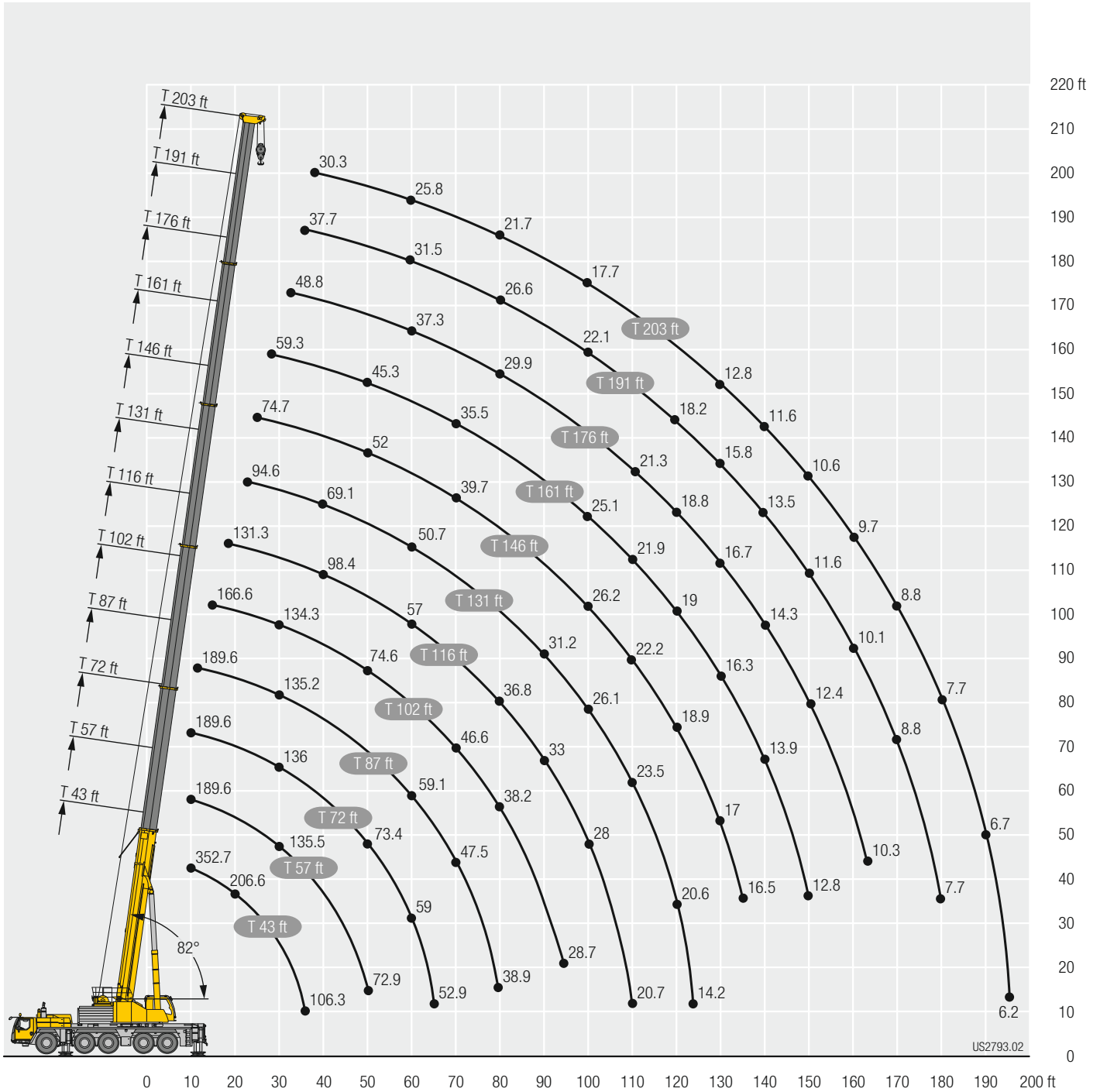
43 ft	43 ft 57 ft 72 ft 87 ft 102 ft 116 ft 131 ft 146 ft 161 ft 176 ft 191 ft 203 ft												43 ft	
	*													
10	352.7	189.6	189.6	189.6										10
11	307.6	189.6	189.6	189.6	189.6									11
12	295.6	189.6	189.6	189.6	189.6									12
13	284.6	189.6	189.6	189.6	189.6									13
14	274.3	189.6	189.6	189.6	189.6									14
15	263.3	189.6	189.6	189.6	189.6	166.6								15
16	249.2	189.6	189.6	189.6	189.6	165.4								16
17	235.2	189.6	189.6	189.6	189.6	164.2								17
18	222.5	189.6	189.6	189.6	189.6	163	131.3							18
19	210.9	188.3	189.3	188.5	187.8	161.8	130							19
20	200.3	184.4	183.9	184.8	183.6	160.6	128.7							20
22	181.9	171.1	171.9	171.5	172.3	158.1	126.1	94.6						22
24	166.5	159.3	161	161.1	160.8	155	123.5	91.3	74.7					24
26	153.3	148.2	149.9	150.5	149.7	148.8	120.9	88	73.3					26
28	141.9	138.4	140.1	140.7	140.1	139	118.4	84.7	71.4	59.3				28
30	131.9	129.6	131.4	131.8	131.1	130.2	115.9	81.6	69.4	58.2				30
32	123.2	120.5	122.5	123.2	122.4	121.2	113.5	78.9	67.5	56.9	48.8			32
34	115.4	112.1	114.1	114.8	114.2	113.1	110.9	76.4	65.5	55.7	47.9			34
36	106.1	104.8	106.7	107.3	106.7	107.9	106.9	73.9	63.6	54.4	47	37.7		36
38			100.1	100.7	100	101.6	100.5	71.4	61.8	53.2	46.1	37.3	30.3	38
40			93.9	94.6	94.5	95.6	94.4	69.1	60.1	51.9	45.2	36.7	30	40
45			80.3	80.9	82.8	81.9	80.7	63.9	55.6	48.6	43	35.4	29	45
50			70.7	70.2	72.1	71.3	70.1	58.9	52	45.3	41	34.2	28	50
55				63.5	63.5	62.7	61.4	54.7	48.5	42.6	39.2	32.9	26.9	55
60				56.4	56.4	55.6	54.3	50.7	45.3	40	37.3	31.5	25.8	60
65				50.4	50.3	49.4	48.1	47.5	42.5	37.6	35.3	30.3	24.8	65
70					45.1	44.3	43	43.8	39.7	35.5	33.4	29	23.8	70
75					40.8	40.6	39.1	39.4	37.3	33.4	31.6	27.8	22.7	75
80					37.1	37.1	36.7	35.6	34.4	31.5	29.9	26.6	21.7	80
85						33.9	34.1	32.3	32.2	29.7	28.3	25.4	20.7	85
90							31	31.2	29.4	29.5	28.1	26.8	24.3	90
95							28.7	28.7	27.2	27	25.9	25.4	23.2	95
100								26.4	25.7	24.7	24.1	23.8	22.1	100
105								24.4	24.3	22.6	22.8	21.7	21	105
110								20.7	22.5	20.8	21	20.6	20	110
115									20.8	19.3	19.3	19.5	18.9	115
120									19.8	18.3	17.7	18.2	17.3	120
125									14.2	17.6	16.3	16.8	15.9	125
130										17	15.1	15.5	14.6	130
135										15.9	14.4	14.3	13.4	135
140											13.8	13.2	12.4	140
145											13	12.3	11.5	145
150											12.1	11.5	10.7	150
155												10.8	10	155
160												10.1	9.3	160
165												9.5	8.6	165
170													8.1	170
175													7.5	175
180													7	180
185														185
190														190
195														195

* ± 0° over rear - en arrière

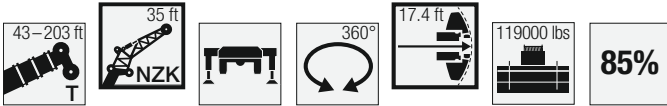
t_253_001_51563_00_000 / 001_50045_00_000

Lifting heights Hauteurs de levage

T



Lifting capacities Forces de levage

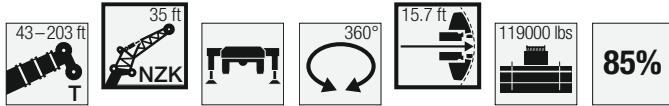


TNZK

	43 ft			57 ft			72 ft			87 ft			102 ft			116 ft			
	0°	20°	40°	0°	20°	40°	0°	20°	40°	0°	20°	40°	0°	20°	40°	0°	20°	40°	
17	40.3	34.7		40.3			40.3			40.3			40.3			40.3			17
18	40	33.8		40.3			40.3			40.3			40.3			40.3			18
19	39.3	33		40.3	34.9		40.3			40.3			40.3			40.3			19
20	38.4	32.2		40.3	34.2		40.3			40.3			40.3			40.3			20
22	36.7	30.7		40.1	32.8		40.3	34.5		40.3			40.3			40.3			22
24	35	29.3		39	31.5		40.3	33.3		40.3	34.7		40.3			40.3			24
26	33.4	28.1	24	37.6	30.3		40.2	32.1		40.3	33.7		40.3			40.3			26
28	31.8	27	23.3	36.1	29.2	23.9	39.5	31.1		40.3	32.6		40.3	33.2		40.3			28
30	30.3	25.9	22.5	34.7	28.2	23.3	38.2	30.1	23.8	40.3	31.6		40.3	32.3		39.9	31.2		30
32	29	25	21.9	33.3	27.2	22.7	37	29.1	23.2	39.8	30.7	23.5	40.3	31.5		39.4	30.5		32
34	27.8	24.1	21.3	32.1	26.3	22.1	35.7	28.2	22.7	38.7	29.9	23.1	40.3	30.6		38.7	29.8		34
36	26.6	23.2	20.7	30.8	25.5	21.6	34.5	27.4	22.2	37.6	29	22.6	39.8	29.9	22.8	38.1	29.1		36
38	25.5	22.5	20.1	29.5	24.7	21.1	33.3	26.6	21.7	36.5	28.3	22.2	39	29.1	22.4	37.4	28.5	22	38
40	24.6	21.7	19.6	28.5	24	20.6	32.2	25.9	21.3	35.4	27.6	21.8	38.1	28.4	22	36.7	27.9	21.7	40
45	21.9	20.1	18.5	26.1	22.3	19.6	29.5	24.2	20.3	32.9	25.8	20.8	35.7	26.8	21.1	35	26.4	20.9	45
50	19	18.8	17.6	24	20.9	18.7	27.3	22.8	19.4	30.4	24.4	20	33.3	25.4	20.3	33.1	25.2	20.2	50
55	16.7	17.7	16.9	21.5	19.7	17.9	25.4	21.5	18.7	28.3	23.1	19.3	31.1	24.1	19.7	31.5	24	19.5	55
60	14.8	16.8	16.5	19	18.6	17.3	23.2	20.3	18	26.5	21.9	18.6	29.1	22.9	19	30	23	19	60
65	13.2	15.9	16.3	17.1	17.7	16.7	21	19.3	17.4	24.7	20.9	18	27.4	21.9	18.4	28.5	22	18.4	65
70	12	15.3		15.4	16.9	16.4	19	18.5	16.9	22.4	20	17.5	25.5	21	17.9	26.7	21.1	18	70
75				14	16.3	16.2	17.3	17.7	16.5	20.5	19.1	17	23.5	20.1	17.4	24.8	20.4	17.5	75
80				12.8	15.6		15.8	17.1	16.2	18.8	18.4	16.7	21.6	19.4	17	23.1	19.7	17.1	80
85				11.8			14.6	16.5	16.1	17.3	17.7	16.3	20	18.7	16.7	21.6	19	16.8	85
90							13.4	15.9		16	17.2	16.1	18.5	18.1	16.4	20.1	18.4	16.5	90
95							12.4	15.4		14.9	16.7	16	17.2	17.5	16.1	18.8	17.9	16.2	95
100							11.7			13.9	16.2		16.1	17	16	17.7	17.4	16	100
105										13	15.7		15.1	16.6	15.9	16.6	16.9	15.8	105
110										12.2	15.3		14.2	16.1		15.7	16.6	15.7	110
115										11.6			13.4	15.7		14.9	16.2	15.6	115
120													12.6	15.4		14.1	15.8	15.6	120
125													12.1	15.1		13.4	15.4		125
130													11.5			12.8	15.2		130
135																12.2	15		135
140																11.8	14.3		140
145																11.4			145

t_253_003_50265_00_000

Lifting capacities Forces de levage

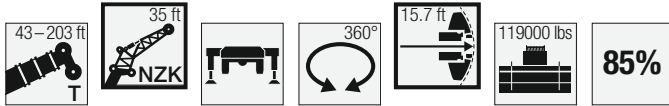


TNZK

Jib ↙ ↘	43 ft 35 ft			57 ft 35 ft			72 ft 35 ft			87 ft 35 ft			102 ft 35 ft			116 ft 35 ft			Jib ↙ ↘
	0°	20°	40°	0°	20°	40°	0°	20°	40°	0°	20°	40°	0°	20°	40°	0°	20°	40°	
17	40.3	34.7		40.3			40.3			40.3			40.3			40.3			17
18	40	33.8		40.3			40.3			40.3			40.3			40.3			18
19	39.3	33		40.3	34.9		40.3			40.3			40.3			40.3			19
20	38.4	32.2		40.3	34.2		40.3			40.3			40.3			40.3			20
22	36.7	30.7		40.1	32.8		40.3	34.5		40.3			40.3			40.3			22
24	35	29.3		39	31.5		40.3	33.3		40.3	34.7		40.3			40.3			24
26	33.4	28.1	24	37.6	30.3		40.2	32.1		40.3	33.7		40.3			40.3			26
28	31.8	27	23.3	36.1	29.2	23.9	39.5	31.1		40.3	32.6		40.3	33.2		40.3			28
30	30.3	25.9	22.5	34.7	28.2	23.3	38.2	30.1	23.8	40.3	31.6		40.3	32.3		39.9	31.2		30
32	29	25	21.9	33.3	27.2	22.7	37	29.1	23.2	39.8	30.7	23.5	40.3	31.5		39.4	30.5		32
34	27.8	24.1	21.3	32.1	26.3	22.1	35.7	28.2	22.7	38.7	29.9	23.1	40.3	30.6		38.7	29.8		34
36	26.6	23.2	20.7	30.8	25.5	21.6	34.5	27.4	22.2	37.6	29	22.6	39.8	29.9	22.8	38.1	29.1		36
38	25.5	22.5	20.1	29.5	24.7	21.1	33.3	26.6	21.7	36.5	28.3	22.2	39	29.1	22.4	37.4	28.5	22	38
40	24.6	21.7	19.6	28.5	24	20.6	32.2	25.9	21.3	35.4	27.6	21.8	38.1	28.4	22	36.7	27.9	21.7	40
45	21.9	20.1	18.5	26.1	22.3	19.6	29.5	24.2	20.3	32.9	25.8	20.8	35.7	26.8	21.1	35	26.4	20.9	45
50	19	18.8	17.6	24	20.9	18.7	27.3	22.8	19.4	30.4	24.4	20	33.3	25.4	20.3	33.1	25.2	20.2	50
55	16.7	17.7	16.9	21.5	19.7	17.9	25.4	21.5	18.7	28.3	23.1	19.3	31.1	24.1	19.7	31.5	24	19.5	55
60	14.8	16.8	16.5	19	18.6	17.3	23.2	20.3	18	26.5	21.9	18.6	29.1	22.9	19	30	23	19	60
65	13.2	15.9	16.3	17.1	17.7	16.7	21	19.3	17.4	24.7	20.9	18	27.4	21.9	18.4	28.5	22	18.4	65
70	12	15.3		15.4	16.9	16.4	19	18.5	16.9	22.4	20	17.5	25.5	21	17.9	26.7	21.1	18	70
75				14	16.3	16.2	17.3	17.7	16.5	20.5	19.1	17	23.5	20.1	17.4	24.8	20.4	17.5	75
80				12.8	15.6		15.8	17.1	16.2	18.8	18.4	16.7	21.6	19.4	17	23.1	19.7	17.1	80
85				11.8			14.6	16.5	16.1	17.3	17.7	16.3	20	18.7	16.7	21.6	19	16.8	85
90							13.4	15.9		16	17.2	16.1	18.5	18.1	16.4	20.1	18.4	16.5	90
95							12.4	15.4		14.9	16.7	16	17.2	17.5	16.1	18.8	17.9	16.2	95
100							11.7			13.9	16.2		16.1	17	16	17.7	17.4	16	100
105										13	15.7		15.1	16.6	15.9	16.6	16.9	15.8	105
110										12.2	15.3		14.2	16.1		15.7	16.6	15.7	110
115										11.6			13.4	15.7		14.9	16.2	15.6	115
120													12.6	15.4		14.1	15.8	15.6	120
125													12.1	15.1		13.4	15.4		125
130													11.5			12.8	15.2		130
135																12.2	14.4		135
140																11.8	14.1		140
145																11.4			145

t_253_003_50001_00_000

Lifting capacities Forces de levage

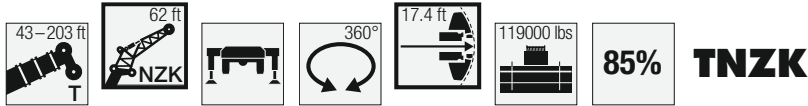


TNZK

↙ ↘	131 ft 35 ft			146 ft 35 ft			161 ft 35 ft			176 ft 35 ft			191 ft 35 ft			203 ft 35 ft			↙ ↘
	0°	20°	40°	0°	20°	40°	0°	20°	40°	0°	20°	40°	0°	20°	40°	0°	20°	40°	
22	39.2																		22
24	38.8																		24
26	38.3			33															26
28	37.9			32.7															28
30	37.5			32.4			28.4												30
32	37.1			32.1			28.2			24.2									32
34	36.6	29.3		31.8			27.9			24.1									34
36	36.1	28.7		31.5			27.7			24			20.1						36
38	35.4	28.2		31.2	26.5		27.5			23.9			20.1			15.9			38
40	34.8	27.6		30.8	26.1		27.3			23.7			20			15.9			40
45	33.3	26.3	20.8	29.8	25		26.7	23.7		23.4			19.9			15.8			45
50	31.9	25.1	20.2	28.8	24	20	26	22.9	19.7	23.1	21.5		19.7	18.7		15.8			50
55	30.6	24.1	19.5	27.8	23.1	19.5	25.4	22.2	19.2	22.7	20.9	18.3	19.5	18.4		15.7	15.8		55
60	29.3	23.1	19	26.9	22.3	19	24.7	21.5	18.7	22.2	20.3	18	19.3	18.2	16.8	15.7	15.3		60
65	28	22.2	18.5	26.1	21.5	18.6	24	20.8	18.3	21.7	19.8	17.6	19	17.8	16.5	15.2	14.8	14.6	65
70	26.9	21.4	18	25.2	20.8	18.1	23.4	20.2	17.9	21.3	19.3	17.2	18.7	17.4	16.2	14.8	14.3	14.2	70
75	25.7	20.6	17.6	24.4	20.2	17.7	22.8	19.6	17.5	20.9	18.8	16.9	18.3	16.9	16	14.3	13.9	13.7	75
80	24.4	19.9	17.2	23.6	19.5	17.4	22.2	19.1	17.2	20.4	18.4	16.6	17.8	16.4	15.7	13.9	13.4	13.3	80
85	23	19.3	16.9	22.7	19	17.1	21.6	18.6	16.9	20	17.9	16.4	17.3	15.9	15.5	13.5	13	12.9	85
90	21.6	18.7	16.6	21.7	18.5	16.8	21	18.1	16.6	19.6	17.5	16.1	16.8	15.4	15.2	13.1	12.6	12.5	90
95	20.4	18.2	16.3	20.7	18	16.5	20.4	17.7	16.4	19.1	17.2	15.9	16.2	14.9	14.8	12.7	12.2	12.1	95
100	19.2	17.7	16.1	19.7	17.6	16.3	19.7	17.3	16.1	18.6	16.8	15.7	15.7	14.5	14.3	12.3	11.9	11.8	100
105	18.1	17.3	15.9	18.7	17.2	16.1	18.9	16.9	16	18.1	16.5	15.5	15.2	14.1	13.9	11.9	11.5	11.5	105
110	17.2	16.9	15.7	17.8	16.8	15.9	18.2	16.6	15.8	17.3	16.2	15.4	14.7	13.7	13.5	11.5	11.2	11.2	110
115	16.3	16.5	15.6	17	16.5	15.8	17.4	16.3	15.6	16.5	15.9	15.3	14.2	13.3	13.2	11.2	10.9	10.9	115
120	15.5	16.2	15.5	16.2	16.1	15.7	16.5	16	15.5	15.8	15.5	15.1	13.8	12.9	12.8	10.9	10.7	10.6	120
125	14.7	15.7	15.4	15.3	15.7	15.6	15.3	15.6	15.4	14.9	15	15	13.3	12.5	12.5	10.5	10.4	10.4	125
130	13.8	15.3	15.3	14.7	15.4	15.4	14.7	14.7	15	13.7	14.4	14.6	12.9	12.2	12.1	10	10.1	10.1	130
135	13.3	14.7		13.8	14.4	14.9	13.7	14.1	14.2	12.6	13.3	13.9	12.4	11.9	11.9	9.6	9.8	9.9	135
140	12.7	14.1		12.8	13.3	13.7	12.6	13.2	13.6	11.9	12.3	12.8	11.8	11.5	11.6	9.2	9.4	9.6	140
145	12.2	13.1		12	12.3		11.7	12.2	12.6	11.5	11.5	11.9	11	11.2	11.3	8.8	9	9.2	145
150	11.8	12.6		11.5	11.6		10.9	11.4	11.7	11	11.1	11.1	10.2	10.8	11.1	8.4	8.6	8.8	150
155	11.5			10.9	11.1		10.2	10.6	10.9	10.3	10.7	10.8	9.4	10.1	10.4	8	8.2	8.4	155
160	8.6			10.2	10.5		9.6	9.8		9.6	10	10.4	8.8	9.4	9.7	7.6	7.9	8	160
165				9.9	9.9		9.2	9.4		9	9.3	9.7	8.1	8.7	9	7.3	7.5	7.7	165
170				9.6			8.9	9		8.4	8.7		7.5	8.1	8.3	6.9	7.1	7.3	170
175				4.8			8.5	8.7		7.8	8.1		6.9	7.5	7.6	6.6	6.8	6.9	175
180							8	8.1		7.3	7.5		6.4	6.9		6.3	6.5	6.6	180
185							7.5			6.8	7		5.9	6.3		5.9	6.2	6.3	185
190										6.4	6.5		5.4	5.8		5.4	5.8		190
195										5.9	6		5	5.4		5	5.3		195
200										5.5			4.6	4.9		4.1	4.8		200
205													4.2	4.5		3	3.9		205
210													3.9	4			2.6		210
215													3						215

L_253_003_50001_00_000

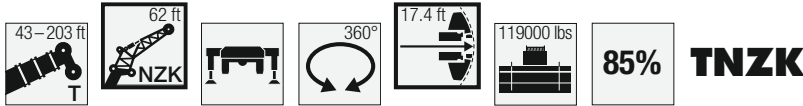
Lifting capacities Forces de levage



	43 ft 62 ft			57 ft 62 ft			72 ft 62 ft			87 ft 62 ft			102 ft 62 ft			116 ft 62 ft			
	0°	20°	40°	0°	20°	40°	0°	20°	40°	0°	20°	40°	0°	20°	40°	0°	20°	40°	
17	16.3			16.4			16.4			16.5									17
18	16.2			16.3			16.4			16.5									18
19	16.2			16.3			16.4			16.4			16.5						19
20	16.1			16.3			16.3			16.4			16.5						20
22	15.9			16.2			16.3			16.4			16.4			16.1			22
24	15.7			16			16.3			16.3			16.4			16			24
26	15.5			15.9			16.2			16.3			16.3			15.8			26
28	15.1			15.7			16			16.2			16.3			15.7			28
30	14.8			15.5			15.9			16.1			16.2			15.6			30
32	14.4	12.3		15.3			15.7			16			16.1			15.4			32
34	14	12		14.9	12.3		15.5			15.9			15.9			15.3			34
36	13.6	11.7		14.6	12		15.3	12.2		15.7			15.7			15.1			36
38	13.2	11.4		14.3	11.7		15.1	12		15.4	12.2		15.5			14.9			38
40	12.9	11.1		13.9	11.5		14.8	11.7		15.2	11.9		15.2			14.8			40
45	12	10.5		13.1	10.9		14	11.2		14.5	11.4		14.7	11.5		14.3	11.4		45
50	11.3	9.9	8.6	12.3	10.4	8.8	13.3	10.7		13.9	10.9		14.1	11.1		13.8	11		50
55	10.6	9.5	8.3	11.7	9.9	8.5	12.6	10.2	8.6	13.2	10.5	8.7	13.5	10.7		13.3	10.7		55
60	9.8	9	8.1	11.1	9.5	8.3	11.9	9.8	8.4	12.6	10.1	8.4	12.9	10.3	8.5	12.8	10.3	8.5	60
65	9	8.6	7.9	10.4	9.1	8.1	11.4	9.4	8.2	12	9.7	8.3	12.4	10	8.3	12.3	10	8.3	65
70	8.3	8.3	7.7	9.6	8.8	7.9	10.7	9.1	8	11.5	9.4	8.1	11.9	9.6	8.2	11.9	9.7	8.2	70
75	7.6	8	7.5	8.9	8.5	7.7	10.1	8.8	7.8	10.9	9.1	7.9	11.4	9.4	8	11.5	9.4	8	75
80	7.1	7.8	7.5	8.3	8.2	7.6	9.5	8.5	7.7	10.4	8.8	7.8	11	9.1	7.9	11.1	9.2	7.9	80
85	6.6	7.6	7.5	7.7	8	7.5	8.8	8.3	7.6	9.8	8.6	7.7	10.6	8.8	7.8	10.8	8.9	7.8	85
90	6.2	7.5	7.5	7.2	7.8	7.5	8.3	8.1	7.5	9.3	8.4	7.6	10.1	8.6	7.7	10.4	8.7	7.7	90
95	5.8	7.5		6.8	7.6	7.4	7.8	7.9	7.4	8.7	8.2	7.5	9.5	8.4	7.6	10	8.5	7.6	95
100				6.4	7.5	7.4	7.3	7.7	7.4	8.2	8	7.4	9	8.2	7.5	9.6	8.4	7.5	100
105				6	7.4		6.9	7.6	7.4	7.8	7.8	7.4	8.6	8.1	7.4	9.1	8.2	7.5	105
110				5.7	7.4		6.6	7.5	7.4	7.4	7.7	7.4	8.1	7.9	7.4	8.7	8	7.4	110
115							6.2	7.4	7.4	7	7.6	7.4	7.7	7.8	7.4	8.3	7.9	7.4	115
120							5.9	7.4		6.7	7.5	7.4	7.4	7.7	7.4	7.9	7.8	7.4	120
125							5.7	7.4		6.4	7.4	7.4	7	7.5	7.4	7.6	7.7	7.3	125
130										6.1	7.4		6.7	7.5	7.4	7.3	7.6	7.3	130
135										5.9	7.4		6.5	7.4	7.4	7	7.5	7.3	135
140										5.6	7.4		6.2	7.4	7.4	6.7	7.4	7.3	140
145													6	7.4		6.5	7.3	7.3	145
150													5.8	7.4		6.2	7.3	7.3	150
155													5.6	7.4		6	7.3		155
160																5.8	7.3		160
165																5.7	7.3		165
170																5.5			170

t_253_003_50277_00_000

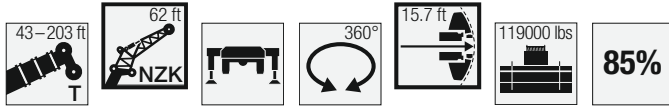
Lifting capacities Forces de levage



Height (ft)	131 ft 62 ft			146 ft 62 ft			161 ft 62 ft			176 ft 62 ft			191 ft 62 ft			203 ft 62 ft			Height (ft)
	0°	20°	40°	0°	20°	40°	0°	20°	40°	0°	20°	40°	0°	20°	40°	0°	20°	40°	
26	15.4																		26
28	15.2			14.1															28
30	15.1			14															30
32	15			13.9			13												32
34	14.9			13.8			12.9												34
36	14.7			13.7			12.8			11.8									36
38	14.6			13.6			12.7			11.8									38
40	14.4			13.5			12.7			11.7			10.6						40
45	14			13.3			12.5			11.6			10.5			9.5			45
50	13.6	11		12.9			12.3			11.5			10.4			9.4			50
55	13.2	10.7		12.6	10.5		12	10.2		11.3			10.3			9.4			55
60	12.7	10.4		12.2	10.2		11.7	10		11.1	9.7		10.2			9.3			60
65	12.3	10.1	8.3	11.9	9.9		11.4	9.7		10.9	9.5		10	9.1		9.2			65
70	11.9	9.8	8.2	11.5	9.7	8.1	11.2	9.5		10.7	9.3		9.9	8.9		9.1	8.5		70
75	11.5	9.5	8.1	11.2	9.4	8	10.9	9.3	8	10.5	9.1	7.9	9.7	8.8		9	8.4		75
80	11.2	9.3	7.9	10.9	9.2	7.9	10.7	9.1	7.9	10.3	8.9	7.8	9.6	8.6		8.9	8.2		80
85	10.8	9.1	7.8	10.6	9	7.8	10.4	8.9	7.8	10.1	8.8	7.7	9.5	8.5	7.6	8.7	8.1		85
90	10.5	8.8	7.7	10.4	8.8	7.7	10.2	8.8	7.7	9.9	8.6	7.6	9.3	8.4	7.5	8.6	8	7.3	90
95	10.2	8.7	7.6	10.1	8.7	7.6	10	8.6	7.6	9.7	8.5	7.5	9.2	8.2	7.4	8.5	7.9	7.3	95
100	10	8.5	7.6	9.9	8.5	7.5	9.7	8.4	7.5	9.5	8.3	7.5	9	8.1	7.4	8.4	7.8	7.2	100
105	9.6	8.3	7.5	9.6	8.3	7.5	9.5	8.3	7.5	9.3	8.2	7.4	8.9	8	7.3	8.3	7.7	7.2	105
110	9.2	8.2	7.4	9.4	8.2	7.4	9.3	8.2	7.4	9.1	8.1	7.4	8.7	7.9	7.3	8.2	7.6	7.1	110
115	8.8	8	7.4	9.1	8	7.4	9.1	8	7.4	8.9	8	7.3	8.6	7.8	7.2	8.1	7.6	7.1	115
120	8.4	7.9	7.3	8.8	7.9	7.3	8.9	7.9	7.3	8.7	7.9	7.3	8.5	7.7	7.2	8	7.5	7.1	120
125	8.1	7.8	7.3	8.4	7.8	7.3	8.6	7.8	7.3	8.6	7.8	7.2	8.4	7.6	7.2	7.9	7.4	7	125
130	7.8	7.7	7.3	8.1	7.7	7.3	8.4	7.7	7.3	8.4	7.7	7.2	8.2	7.5	7.1	7.8	7.4	7	130
135	7.5	7.6	7.3	7.8	7.6	7.3	8.1	7.6	7.2	8.2	7.6	7.2	8	7.5	7.1	7.8	7.3	7	135
140	7.2	7.5	7.3	7.5	7.5	7.3	7.8	7.6	7.2	8	7.5	7.2	7.8	7.4	7.1	7.6	7.2	7	140
145	6.9	7.4	7.3	7.3	7.4	7.3	7.5	7.5	7.2	7.7	7.5	7.1	7.7	7.3	7.1	7.5	7.2	7	145
150	6.7	7.4	7.3	7	7.4	7.3	7.3	7.4	7.2	7.5	7.4	7.1	7.5	7.3	7.1	7.4	7.1	7	150
155	6.5	7.3	7.3	6.8	7.3	7.3	7.1	7.4	7.2	7.3	7.3	7.1	7.3	7.2	7.1	7.2	7.1	7	155
160	6.3	7.3	7.3	6.6	7.3	7.3	6.9	7.3	7.2	7.1	7.3	7.1	7.1	7.2	7.1	7	7	6.9	160
165	6.1	7.3	7.3	6.4	7.3	7.3	6.7	7.3	7.2	6.9	7.2	7.1	7	7.1	7.1	6.8	6.8	6.9	165
170	5.9	7.3		6.2	7.3	7.3	6.5	7.2	7.2	6.7	7.2	7.1	6.8	7.1	7.1	6.5	6.7	6.8	170
175	5.8	7.3		6.1	7.3	7.3	6.3	7.2	7.2	6.5	7.2	7.1	6.6	7.1	7.1	6.3	6.5	6.7	175
180	5.6	7.3		5.9	7.3		6.2	7.2	7.2	6.4	7.2	7.1	6.5	7.1	7.1	6	6.3	6.5	180
185	5.5			5.8	7.3		6	7.2	7.2	6.3	7.1	7.1	6.3	7.1	7.1	5.7	6	6.3	185
190				5.7	7.3		5.9	7.2		6.1	7.1	7.1	6.2	7.1	7.1	5.5	5.8	6.1	190
195				5.6	7.3		5.8	7.2		6	7.1	7.1	6.1	6.9	7.1	5.2	5.5	5.8	195
200				5.5			5.7	7.1		5.8	7.1	7.1	5.9	6.5	6.8	5	5.3	5.5	200
205							5.6	6.6		5.7	6.8		5.5	6.1	6.3	4.5	5	5.2	205
210							5.5	6.4		5.6	6.3		5.2	5.6	5.8	3.5	4.7	4.9	210
215							5.3			5.5	5.9		4.5	5.2		2.3	4.2	4.6	215
220										5.3	5.5		3.6	4.8			2.9	3.5	220
225										5	5.1		2.5	3.6				2.2	225
230										3.4				2.5					230

t_253_003_50277_00_000

Lifting capacities Forces de levage

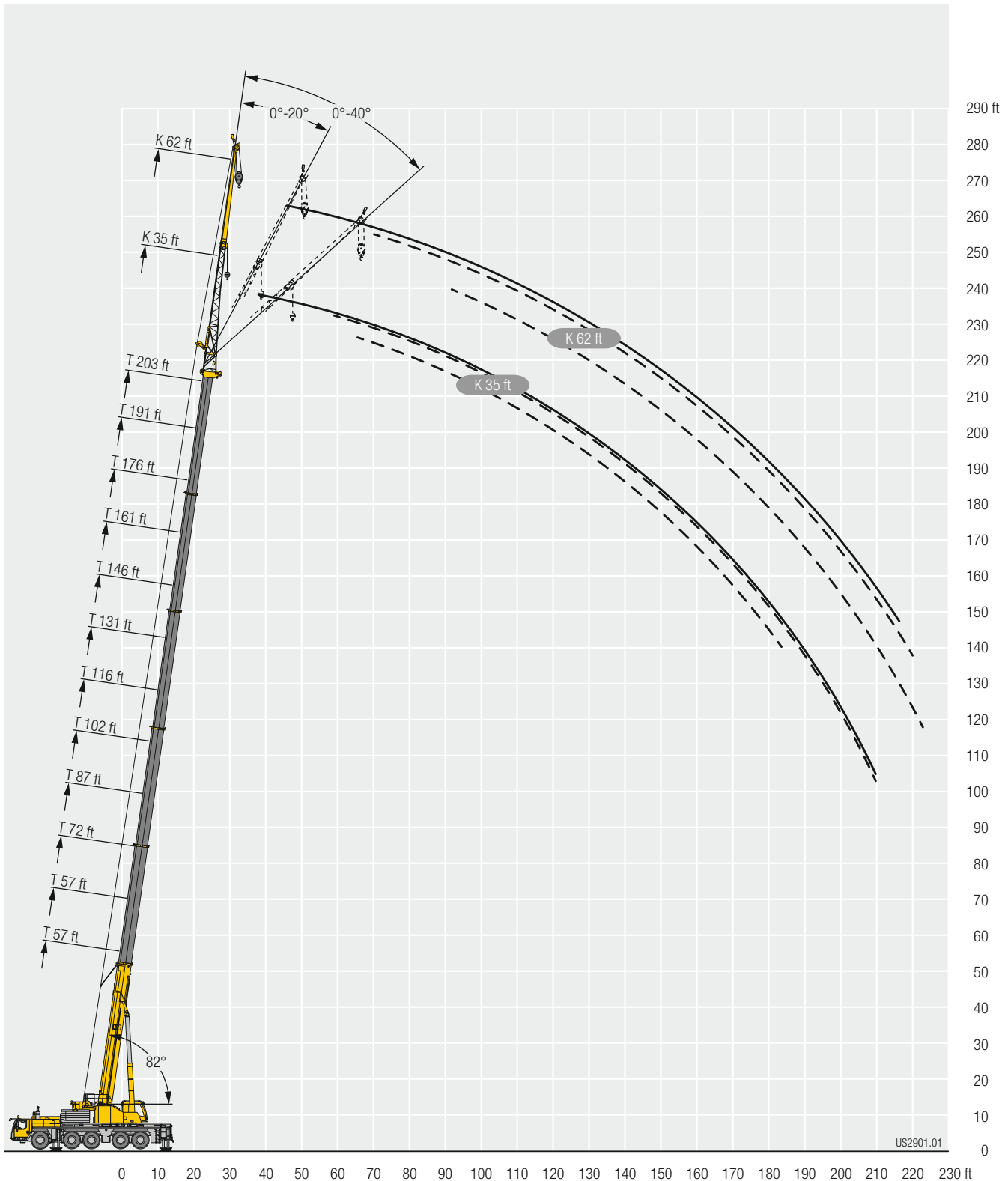


↙ ↘	43 ft 62 ft			57 ft 62 ft			72 ft 62 ft			87 ft 62 ft			102 ft 62 ft			116 ft 62 ft			↙ ↘
	0°	20°	40°	0°	20°	40°	0°	20°	40°	0°	20°	40°	0°	20°	40°	0°	20°	40°	
17	16.3			16.4			16.4			16.5									17
18	16.2			16.3			16.4			16.5									18
19	16.2			16.3			16.4			16.4			16.5						19
20	16.1			16.3			16.3			16.4			16.5						20
22	15.9			16.2			16.3			16.4			16.4			16.1			22
24	15.7			16			16.3			16.3			16.4			16			24
26	15.5			15.9			16.2			16.3			16.3			15.8			26
28	15.1			15.7			16			16.2			16.3			15.7			28
30	14.8			15.5			15.9			16.1			16.2			15.6			30
32	14.4	12.3		15.3			15.7			16			16.1			15.4			32
34	14	12		14.9	12.3		15.5			15.9			15.9			15.3			34
36	13.6	11.7		14.6	12		15.3	12.2		15.7			15.7			15.1			36
38	13.2	11.4		14.3	11.7		15.1	12		15.4	12.2		15.5			14.9			38
40	12.9	11.1		13.9	11.5		14.8	11.7		15.2	11.9		15.2			14.8			40
45	12	10.5		13.1	10.9		14	11.2		14.5	11.4		14.7	11.5		14.3	11.4		45
50	11.3	9.9	8.6	12.3	10.4	8.8	13.3	10.7		13.9	10.9		14.1	11.1		13.8	11		50
55	10.6	9.5	8.3	11.7	9.9	8.5	12.6	10.2	8.6	13.2	10.5	8.7	13.5	10.7		13.3	10.7		55
60	9.8	9	8.1	11.1	9.5	8.3	11.9	9.8	8.4	12.6	10.1	8.4	12.9	10.3	8.5	12.8	10.3	8.5	60
65	9	8.6	7.9	10.4	9.1	8.1	11.4	9.4	8.2	12	9.7	8.3	12.4	10	8.3	12.3	10	8.3	65
70	8.3	8.3	7.7	9.6	8.8	7.9	10.7	9.1	8	11.5	9.4	8.1	11.9	9.6	8.2	11.9	9.7	8.2	70
75	7.6	8	7.5	8.9	8.5	7.7	10.1	8.8	7.8	10.9	9.1	7.9	11.4	9.4	8	11.5	9.4	8	75
80	7.1	7.8	7.5	8.3	8.2	7.6	9.5	8.5	7.7	10.4	8.8	7.8	11	9.1	7.9	11.1	9.2	7.9	80
85	6.6	7.6	7.5	7.7	8	7.5	8.8	8.3	7.6	9.8	8.6	7.7	10.6	8.8	7.8	10.8	8.9	7.8	85
90	6.2	7.5	7.5	7.2	7.8	7.5	8.3	8.1	7.5	9.3	8.4	7.6	10.1	8.6	7.7	10.4	8.7	7.7	90
95	5.8	7.5		6.8	7.6	7.4	7.8	7.9	7.4	8.7	8.2	7.5	9.5	8.4	7.6	10	8.5	7.6	95
100				6.4	7.5	7.4	7.3	7.7	7.4	8.2	8	7.4	9	8.2	7.5	9.6	8.4	7.5	100
105				6	7.4		6.9	7.6	7.4	7.8	7.8	7.4	8.6	8.1	7.4	9.1	8.2	7.5	105
110				5.7	7.4		6.6	7.5	7.4	7.4	7.7	7.4	8.1	7.9	7.4	8.7	8	7.4	110
115							6.2	7.4	7.4	7	7.6	7.4	7.7	7.8	7.4	8.3	7.9	7.4	115
120							5.9	7.4		6.7	7.5	7.4	7.4	7.7	7.4	7.9	7.8	7.4	120
125							5.7	7.4		6.4	7.4	7.4	7	7.5	7.4	7.6	7.7	7.3	125
130										6.1	7.4		6.7	7.5	7.4	7.3	7.6	7.3	130
135										5.9	7.4		6.5	7.4	7.4	7	7.5	7.3	135
140										5.6	7.4		6.2	7.4	7.4	6.7	7.4	7.3	140
145													6	7.4		6.5	7.3	7.3	145
150													5.8	7.4		6.2	7.3	7.3	150
155													5.6	7.4		6	7.3		155
160																5.8	7.3		160
165																5.7	7.3		165
170																5.5			170

t_253_003_50012_00_000

Lifting heights Hauteurs de levage

TNZK



Lifting capacities Forces de levage



85% TVNZK

↙ ↘	43 ft + 23 ft			57 ft + 23 ft			72 ft + 23 ft			87 ft + 23 ft			102 ft + 23 ft			116 ft + 23 ft			↙ ↘
	35 ft			35 ft			35 ft			35 ft			35 ft			35 ft			
	0°	20°	40°	0°	20°	40°	0°	20°	40°	0°	20°	40°	0°	20°	40°	0°	20°	40°	
17	19.2			19.7			20.2			20.2									17
18	19.3			19.8			20.1			20.2									18
19	19.3			19.7			20			20.2			20.2						19
20	19.2			19.6			20			20.2			20.2						20
22	18.8	17.2		19.4			19.8			20			20.2						22
24	18.3	17.1		19.2	17.2		19.6			19.9			20.1			20.2			24
26	17.7	16.6		18.8	17.2		19.3	17.2		19.7			19.9			20.1			26
28	17.2	16.1		18.3	16.8		19.1	17.2		19.5	17.2		19.8			20			28
30	16.7	15.6	14.8	17.9	16.4		18.8	17		19.3	17.2		19.6			19.9			30
32	16.2	15.1	14.8	17.4	15.9	14.8	18.4	16.6		19.1	17.2		19.4	17.2		19.7			32
34	15.7	14.7	14.4	16.9	15.5	14.8	18	16.2	14.8	18.8	16.8		19.3	17.2		19.6	17.2		34
36	15.2	14.2	14	16.5	15.1	14.6	17.6	15.9	14.8	18.5	16.5		19.1	17		19.4	17.2		36
38	14.7	13.8	13.6	16.1	14.7	14.2	17.1	15.5	14.7	18.1	16.1	14.8	18.8	16.7		19.2	17.1		38
40	14.1	13.4	13.2	15.6	14.4	13.9	16.7	15.1	14.4	17.7	15.8	14.8	18.5	16.3	14.8	19.1	16.8		40
45	12.8	12.6	12.4	14.5	13.5	13.1	15.8	14.3	13.7	16.8	15	14.2	17.6	15.6	14.6	18.4	16.1	14.8	45
50	11.8	11.8	11.7	13.4	12.7	12.4	14.8	13.5	13	15.9	14.2	13.5	16.8	14.9	14	17.6	15.4	14.4	50
55	10.9	11.1	11.1	12.3	12	11.8	13.8	12.8	12.4	15	13.6	12.9	16	14.2	13.4	16.8	14.8	13.8	55
60	10.1	10.4	10.6	11.5	11.5	11.3	12.8	12.2	11.8	14.1	12.9	12.4	15.2	13.6	12.8	16.1	14.2	13.3	60
65	9.4	9.7	10.1	10.7	10.8	10.8	12	11.7	11.4	13.2	12.4	11.9	14.4	13	12.4	15.4	13.6	12.8	65
70	8.8	9	9.4	10	10.2	10.4	11.2	11.2	11	12.4	11.9	11.5	13.6	12.5	11.9	14.6	13.1	12.4	70
75	8.2	8.4	8.7	9.4	9.6	9.9	10.6	10.6	10.6	11.7	11.4	11.1	12.8	12	11.6	13.9	12.6	12	75
80	7.7	7.9	8.1	8.9	9	9.3	10	10	10.3	11	10.9	10.8	12.1	11.6	11.2	13.1	12.1	11.6	80
85	7.3	7.5	7.6	8.4	8.5	8.7	9.5	9.5	9.7	10.5	10.4	10.5	11.5	11.2	10.9	12.4	11.8	11.3	85
90	6.9	7.1	7.5	7.9	8.1	8.2	9	9	9.2	10	9.9	10.1	10.9	10.7	10.6	11.9	11.4	11	90
95				7.5	7.6		8.5	8.6	8.8	9.5	9.5	9.6	10.4	10.3	10.3	11.3	11	10.8	95
100				7.2	7.3		8.1	8.2	8.3	9	9	9.2	9.9	9.8	9.9	10.8	10.6	10.5	100
105				6.9	6.9		7.7	7.8		8.6	8.6	8.8	9.5	9.4	9.5	10.4	10.1	10.2	105
110							7.4	7.5		8.3	8.3	8.4	9.1	9	9.2	9.9	9.8	9.8	110
115							7.1	7.2		7.9	7.9	8	8.7	8.7	8.8	9.5	9.4	9.5	115
120							6.9	6.9		7.6	7.6		8.4	8.3	8.5	9.2	9	9.1	120
125										7.3	7.3		8	8	8.1	8.8	8.7	8.8	125
130										7	7.1		7.7	7.7		8.5	8.4	8.5	130
135										6.8			7.5	7.5		8.2	8.1	8.2	135
140													7.2	7.2		7.9	7.8		140
145													7	7		7.6	7.6		145
150													6.8			7.4	7.4		150
155																7.1	7.1		155
160																6.9	7		160
165																6.8			165

t_253_003_50337_00_000

Lifting capacities Forces de levage

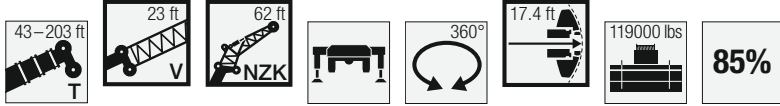


85% TVNZK

↙ ↘	43 ft + 23 ft			57 ft + 23 ft			72 ft + 23 ft			87 ft + 23 ft			102 ft + 23 ft			116 ft + 23 ft			↙ ↘
	35 ft			35 ft			35 ft			35 ft			35 ft			35 ft			
	0°	20°	40°	0°	20°	40°	0°	20°	40°	0°	20°	40°	0°	20°	40°	0°	20°	40°	
17	19.2			19.7			20.2			20.2									17
18	19.3			19.8			20.1			20.2									18
19	19.3			19.7			20			20.2			20.2						19
20	19.2			19.6			20			20.2			20.2						20
22	18.8	17.2		19.4			19.8			20			20.2						22
24	18.3	17.1		19.2	17.2		19.6			19.9			20.1			20.2			24
26	17.7	16.6		18.8	17.2		19.3	17.2		19.7			19.9			20.1			26
28	17.2	16.1		18.3	16.8		19.1	17.2		19.5	17.2		19.8			20			28
30	16.7	15.6	14.8	17.9	16.4		18.8	17		19.3	17.2		19.6			19.9			30
32	16.2	15.1	14.8	17.4	15.9	14.8	18.4	16.6		19.1	17.2		19.4	17.2		19.7			32
34	15.7	14.7	14.4	16.9	15.5	14.8	18	16.2	14.8	18.8	16.8		19.3	17.2		19.6	17.2		34
36	15.2	14.2	14	16.5	15.1	14.6	17.6	15.9	14.8	18.5	16.5		19.1	17		19.4	17.2		36
38	14.7	13.8	13.6	16.1	14.7	14.2	17.1	15.5	14.7	18.1	16.1	14.8	18.8	16.7		19.2	17.1		38
40	14.1	13.4	13.2	15.6	14.4	13.9	16.7	15.1	14.4	17.7	15.8	14.8	18.5	16.3	14.8	19.1	16.8		40
45	12.8	12.6	12.4	14.5	13.5	13.1	15.8	14.3	13.7	16.8	15	14.2	17.6	15.6	14.6	18.4	16.1	14.8	45
50	11.8	11.8	11.7	13.4	12.7	12.4	14.8	13.5	13	15.9	14.2	13.5	16.8	14.9	14	17.6	15.4	14.4	50
55	10.9	11.1	11.1	12.3	12	11.8	13.8	12.8	12.4	15	13.6	12.9	16	14.2	13.4	16.8	14.8	13.8	55
60	10.1	10.4	10.6	11.5	11.5	11.3	12.8	12.2	11.8	14.1	12.9	12.4	15.2	13.6	12.8	16.1	14.2	13.3	60
65	9.4	9.7	10.1	10.7	10.8	10.8	12	11.7	11.4	13.2	12.4	11.9	14.4	13	12.4	15.4	13.6	12.8	65
70	8.8	9	9.4	10	10.2	10.4	11.2	11.2	11	12.4	11.9	11.5	13.6	12.5	11.9	14.6	13.1	12.4	70
75	8.2	8.4	8.7	9.4	9.6	9.9	10.6	10.6	10.6	11.7	11.4	11.1	12.8	12	11.6	13.9	12.6	12	75
80	7.7	7.9	8.1	8.9	9	9.3	10	10	10.3	11	10.9	10.8	12.1	11.6	11.2	13.1	12.1	11.6	80
85	7.3	7.5	7.6	8.4	8.5	8.7	9.5	9.5	9.7	10.5	10.4	10.5	11.5	11.2	10.9	12.4	11.8	11.3	85
90	6.9	7.1	7.5	7.9	8.1	8.2	9	9	9.2	10	9.9	10.1	10.9	10.7	10.6	11.9	11.4	11	90
95				7.5	7.6		8.5	8.6	8.8	9.5	9.5	9.6	10.4	10.3	10.3	11.3	11	10.8	95
100				7.2	7.3		8.1	8.2	8.3	9	9	9.2	9.9	9.8	9.9	10.8	10.6	10.5	100
105				6.9	6.9		7.7	7.8		8.6	8.6	8.8	9.5	9.4	9.5	10.4	10.1	10.2	105
110							7.4	7.5		8.3	8.3	8.4	9.1	9	9.2	9.9	9.8	9.8	110
115							7.1	7.2		7.9	7.9	8	8.7	8.7	8.8	9.5	9.4	9.5	115
120							6.9	6.9		7.6	7.6		8.4	8.3	8.5	9.2	9	9.1	120
125										7.3	7.3		8	8	8.1	8.8	8.7	8.8	125
130										7	7.1		7.7	7.7		8.5	8.4	8.5	130
135										6.8			7.5	7.5		8.2	8.1	8.2	135
140													7.2	7.2		7.9	7.8		140
145													7	7		7.6	7.6		145
150													6.8			7.4	7.4		150
155																7.1	7.1		155
160																6.9	7		160
165																6.8			165

t_253_003_50067_00_000

Lifting capacities Forces de levage



85% TVNZK

	43 ft + 23 ft			57 ft + 23 ft			72 ft + 23 ft			87 ft + 23 ft			102 ft + 23 ft			116 ft + 23 ft			
	62 ft			62 ft			62 ft			62 ft			62 ft			62 ft			
	0°	20°	40°	0°	20°	40°	0°	20°	40°	0°	20°	40°	0°	20°	40°	0°	20°	40°	
17	11			11															17
18	11			11			11												18
19	10.9			11			11												19
20	10.9			11			11			11									20
22	10.9			10.9			11			11									22
24	10.8			10.9			11			11			11						24
26	10.7			10.9			10.9			11			11			11			26
28	10.7			10.8			10.9			10.9			11			11			28
30	10.6			10.7			10.8			10.9			11			11			30
32	10.5			10.7			10.8			10.9			10.9			11			32
34	10.3			10.6			10.7			10.8			10.9			10.9			34
36	10.2	10		10.5			10.7			10.8			10.9			10.9			36
38	10.1	10		10.4	10		10.6			10.7			10.8			10.8			38
40	9.9	9.8		10.3	10		10.5	10		10.7			10.8			10.8			40
45	9.5	9.3		10	9.7		10.3	9.9		10.5	10		10.6	10		10.7			45
50	9	8.9		9.5	9.2		10	9.5		10.3	9.8		10.4	9.9		10.6	10		50
55	8.6	8.4	8.4	9.1	8.8	8.4	9.6	9.1		10	9.4		10.2	9.7		10.4	9.9		55
60	8.2	8.1	8	8.7	8.4	8.3	9.2	8.8	8.4	9.6	9.1	8.4	10	9.3		10.2	9.6		60
65	7.8	7.7	7.7	8.3	8.1	7.9	8.8	8.4	8.2	9.3	8.7	8.3	9.7	9	8.4	10	9.3	8.3	65
70	7.4	7.3	7.4	8	7.8	7.6	8.5	8.1	7.9	8.9	8.4	8.1	9.4	8.7	8.2	9.7	9	8.1	70
75	7.1	7	7.1	7.7	7.5	7.4	8.2	7.8	7.6	8.6	8.2	7.8	9	8.4	8	9.4	8.7	8	75
80	6.8	6.7	6.8	7.3	7.2	7.1	7.9	7.5	7.4	8.3	7.9	7.6	8.7	8.2	7.8	9.1	8.4	7.9	80
85	6.5	6.5	6.6	7.1	6.9	6.9	7.6	7.3	7.2	8	7.6	7.4	8.4	7.9	7.6	8.8	8.2	7.8	85
90	6.2	6.2	6.3	6.8	6.6	6.7	7.3	7	6.9	7.8	7.4	7.2	8.2	7.7	7.4	8.6	8	7.6	90
95	6	6	6.1	6.5	6.4	6.4	7	6.8	6.7	7.5	7.1	7	7.9	7.5	7.2	8.3	7.7	7.4	95
100	5.7	5.8	6	6.2	6.2	6.3	6.8	6.6	6.6	7.2	6.9	6.8	7.7	7.2	7	8	7.5	7.2	100
105	5.6	5.6	5.9	6	6	6.1	6.5	6.3	6.4	7	6.7	6.6	7.4	7	6.9	7.8	7.3	7	105
110	5.3	5.5	5.8	5.8	5.8	6	6.3	6.2	6.2	6.8	6.5	6.5	7.2	6.8	6.7	7.6	7.1	6.9	110
115	5.1	5.3	5.5	5.6	5.6	5.9	6.1	6	6.1	6.5	6.3	6.3	7	6.6	6.6	7.4	6.9	6.8	115
120	4.9	5.1		5.5	5.5	5.8	5.9	5.8	6	6.3	6.1	6.2	6.7	6.5	6.4	7.2	6.8	6.6	120
125				5.2	5.4		5.7	5.7	5.9	6.1	6	6.1	6.5	6.3	6.3	7	6.6	6.5	125
130				5	5.2		5.6	5.6	5.8	6	5.8	6	6.4	6.1	6.2	6.7	6.4	6.4	130
135				4.9			5.4	5.5	5.7	5.8	5.7	5.9	6.2	6	6.1	6.5	6.3	6.2	135
140							5.2	5.3		5.6	5.6	5.8	6	5.9	6	6.4	6.1	6.1	140
145							5	5.1		5.5	5.5	5.8	5.8	5.7	5.9	6.2	6	6.1	145
150							4.9			5.3	5.4		5.7	5.6	5.8	6	5.9	6	150
155										5.1	5.3		5.6	5.5	5.8	5.9	5.8	5.9	155
160										5	5.1		5.4	5.5	5.7	5.8	5.7	5.8	160
165										4.9			5.2	5.3		5.6	5.6	5.8	165
170													5.1	5.2		5.5	5.5	5.8	170
175													4.9	5.1		5.3	5.4		175
180													4.9			5.2	5.3		180
185																5.1	5.2		185
190																4.9	5.1		190
195																4.9			195

L_253_003_50349_00_000

Lifting capacities Forces de levage



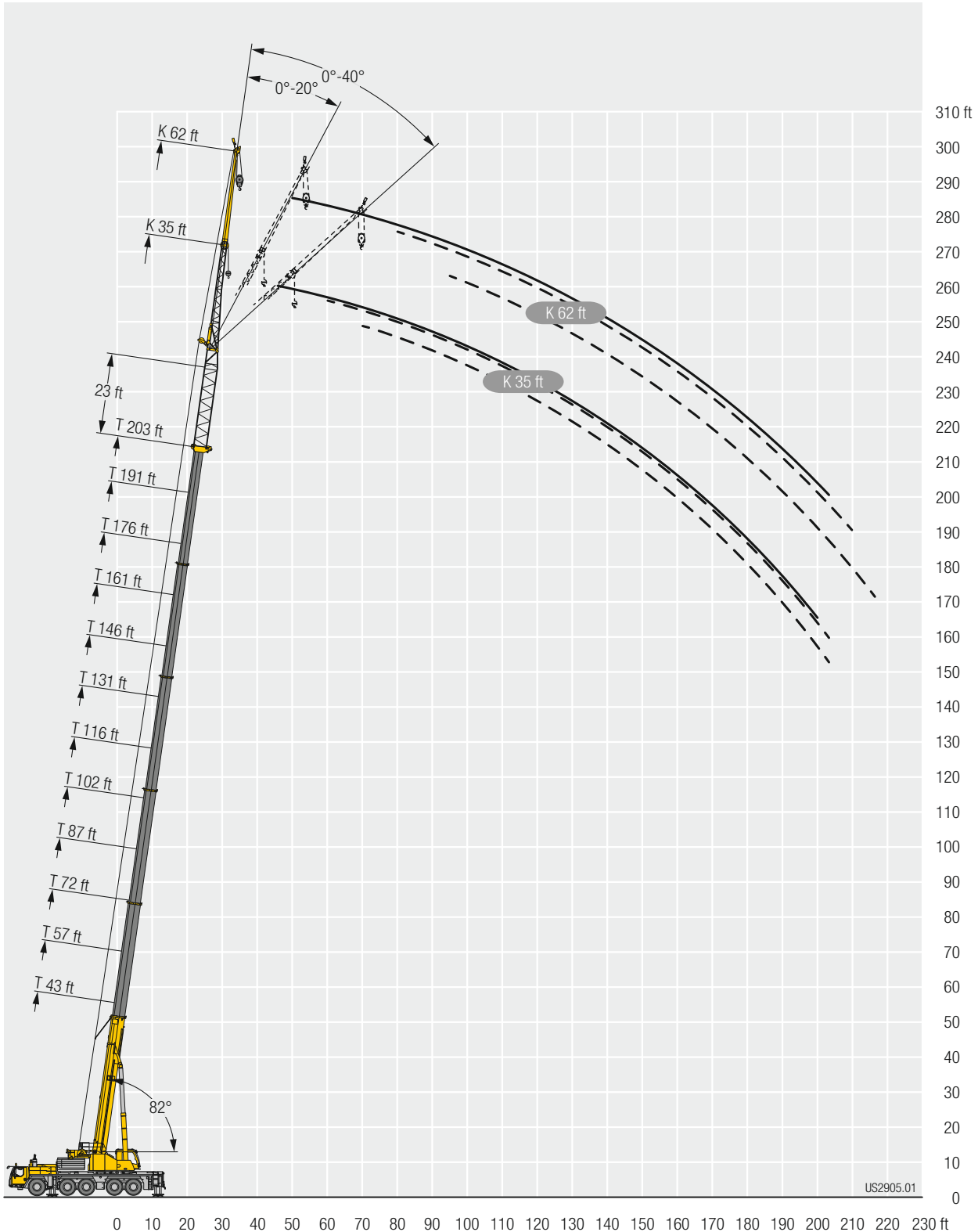
85% **TVNZK**

↙	43 ft + 23 ft			57 ft + 23 ft			72 ft + 23 ft			87 ft + 23 ft			102 ft + 23 ft			116 ft + 23 ft			↘
	62 ft			62 ft			62 ft			62 ft			62 ft			62 ft			
	0°	20°	40°	0°	20°	40°	0°	20°	40°	0°	20°	40°	0°	20°	40°	0°	20°	40°	
17	11			11															17
18	11			11			11												18
19	10.9			11			11												19
20	10.9			11			11			11									20
22	10.9			10.9			11			11									22
24	10.8			10.9			11			11			11						24
26	10.7			10.9			10.9			11			11			11			26
28	10.7			10.8			10.9			10.9			11			11			28
30	10.6			10.7			10.8			10.9			11			11			30
32	10.5			10.7			10.8			10.9			10.9			11			32
34	10.3			10.6			10.7			10.8			10.9			10.9			34
36	10.2	10		10.5			10.7			10.8			10.9			10.9			36
38	10.1	10		10.4	10		10.6			10.7			10.8			10.8			38
40	9.9	9.8		10.3	10		10.5	10		10.7			10.8			10.8			40
45	9.5	9.3		10	9.7		10.3	9.9		10.5	10		10.6	10		10.7			45
50	9	8.9		9.5	9.2		10	9.5		10.3	9.8		10.4	9.9		10.6	10		50
55	8.6	8.4	8.4	9.1	8.8	8.4	9.6	9.1		10	9.4		10.2	9.7		10.4	9.9		55
60	8.2	8.1	8	8.7	8.4	8.3	9.2	8.8	8.4	9.6	9.1	8.4	10	9.3		10.2	9.6		60
65	7.8	7.7	7.7	8.3	8.1	7.9	8.8	8.4	8.2	9.3	8.7	8.3	9.7	9	8.4	10	9.3	8.3	65
70	7.4	7.3	7.4	8	7.8	7.6	8.5	8.1	7.9	8.9	8.4	8.1	9.4	8.7	8.2	9.7	9	8.1	70
75	7.1	7	7.1	7.7	7.5	7.4	8.2	7.8	7.6	8.6	8.2	7.8	9	8.4	8	9.4	8.7	8	75
80	6.8	6.7	6.8	7.3	7.2	7.1	7.9	7.5	7.4	8.3	7.9	7.6	8.7	8.2	7.8	9.1	8.4	7.9	80
85	6.5	6.5	6.6	7.1	6.9	6.9	7.6	7.3	7.2	8	7.6	7.4	8.4	7.9	7.6	8.8	8.2	7.8	85
90	6.2	6.2	6.3	6.8	6.6	6.7	7.3	7	6.9	7.8	7.4	7.2	8.2	7.7	7.4	8.6	8	7.6	90
95	6	6	6.1	6.5	6.4	6.4	7	6.8	6.7	7.5	7.1	7	7.9	7.5	7.2	8.3	7.7	7.4	95
100	5.7	5.8	6	6.2	6.2	6.3	6.8	6.6	6.6	7.2	6.9	6.8	7.7	7.2	7	8	7.5	7.2	100
105	5.6	5.6	5.9	6	6	6.1	6.5	6.3	6.4	7	6.7	6.6	7.4	7	6.9	7.8	7.3	7	105
110	5.3	5.5	5.8	5.8	5.8	6	6.3	6.2	6.2	6.8	6.5	6.5	7.2	6.8	6.7	7.6	7.1	6.9	110
115	5.1	5.3	5.5	5.6	5.6	5.9	6.1	6	6.1	6.5	6.3	6.3	7	6.6	6.6	7.4	6.9	6.8	115
120	4.9	5.1		5.5	5.5	5.8	5.9	5.8	6	6.3	6.1	6.2	6.7	6.5	6.4	7.2	6.8	6.6	120
125				5.2	5.4		5.7	5.7	5.9	6.1	6	6.1	6.5	6.3	6.3	7	6.6	6.5	125
130				5	5.2		5.6	5.6	5.8	6	5.8	6	6.4	6.1	6.2	6.7	6.4	6.4	130
135				4.9			5.4	5.5	5.7	5.8	5.7	5.9	6.2	6	6.1	6.5	6.3	6.2	135
140							5.2	5.3		5.6	5.6	5.8	6	5.9	6	6.4	6.1	6.1	140
145							5	5.1		5.5	5.5	5.8	5.8	5.7	5.9	6.2	6	6.1	145
150							4.9			5.3	5.4		5.7	5.6	5.8	6	5.9	6	150
155										5.1	5.3		5.6	5.5	5.8	5.9	5.8	5.9	155
160										5	5.1		5.4	5.5	5.7	5.8	5.7	5.8	160
165										4.9			5.2	5.3		5.6	5.6	5.8	165
170													5.1	5.2		5.5	5.5	5.8	170
175													4.9	5.1		5.3	5.4		175
180													4.9			5.2	5.3		180
185																5.1	5.2		185
190																4.9	5.1		190
195																4.9			195

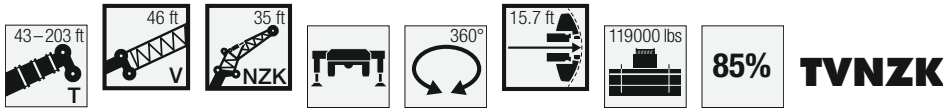
L_253_003_50078_00_000

Lifting heights Hauteurs de levage

TVNZK



Lifting capacities Forces de levage

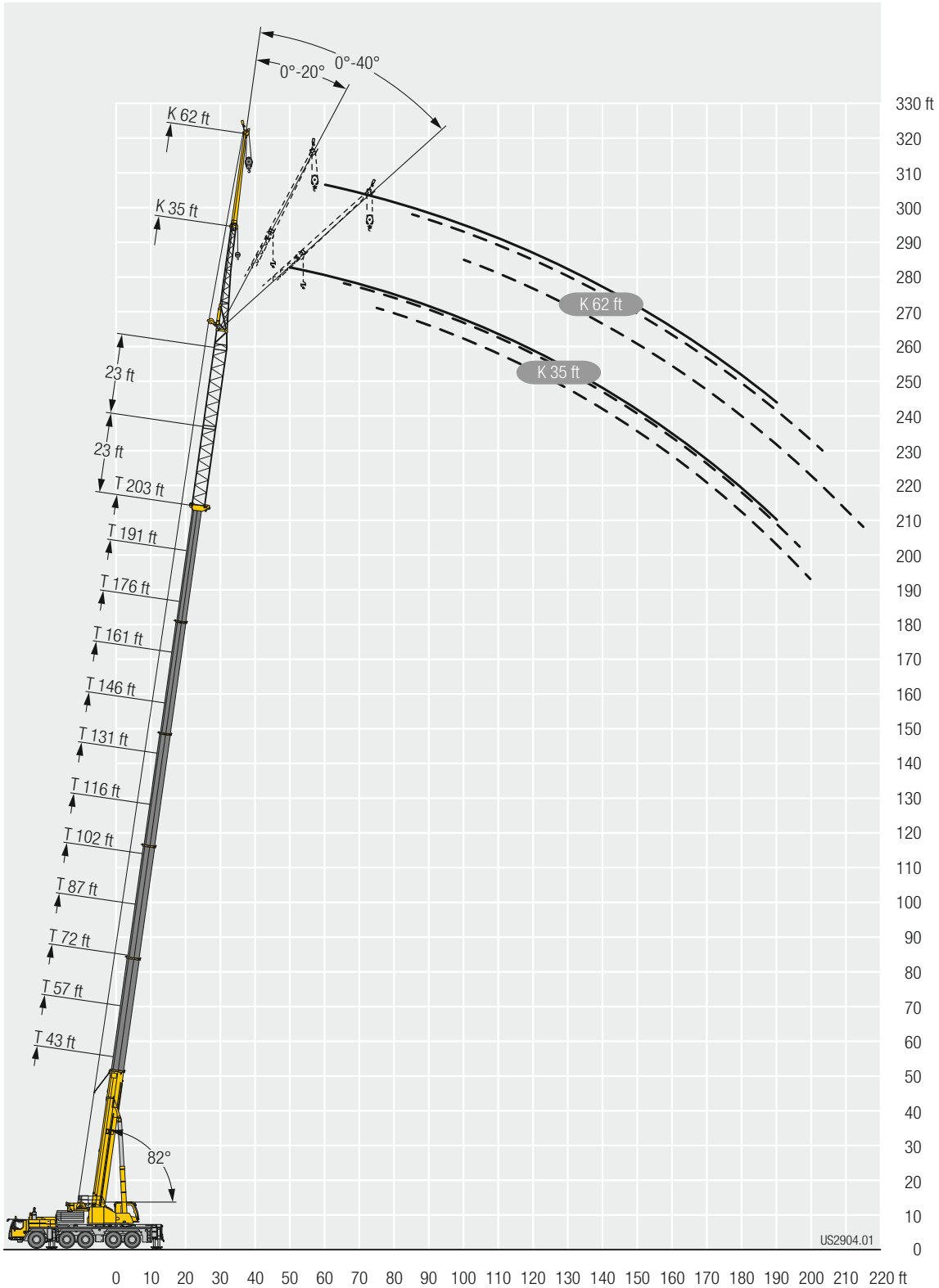


↙ ↘	43 ft + 46 ft			57 ft + 46 ft			72 ft + 46 ft			87 ft + 46 ft			102 ft + 46 ft			116 ft + 46 ft			↙ ↘
	35 ft			35 ft			35 ft			35 ft			35 ft			35 ft			
	0°	20°	40°	0°	20°	40°	0°	20°	40°	0°	20°	40°	0°	20°	40°	0°	20°	40°	
17	12.4			12.5															17
18	12.4			12.5			12.5												18
19	12.3			12.5			12.5												19
20	12.2			12.4			12.5			12.5									20
22	12.1			12.3			12.4			12.5									22
24	11.9			12.2			12.3			12.5			12.5						24
26	11.8	11.8		12			12.2			12.4			12.5			12.5			26
28	11.6	11.8		11.9	11.8		12.1			12.3			12.4			12.5			28
30	11.3	11.5		11.8	11.8		12	11.8		12.2			12.3			12.4			30
32	11.1	11.2		11.6	11.6		11.9	11.8		12.1	11.8		12.2			12.4			32
34	10.8	10.8	10.5	11.4	11.3		11.8	11.7		12	11.8		12.1			12.3			34
36	10.6	10.6	10.5	11.1	11.1	10.5	11.6	11.5		11.9	11.8		12	11.8		12.2			36
38	10.3	10.3	10.3	10.9	10.8	10.5	11.4	11.2	10.5	11.8	11.6		11.9	11.8		12.1	11.8		38
40	10.1	10	10.1	10.7	10.5	10.4	11.2	11	10.5	11.6	11.4		11.8	11.7		12	11.8		40
45	9.5	9.4	9.5	10.1	9.9	9.9	10.7	10.4	10.2	11.1	10.8	10.5	11.5	11.2	10.5	11.8	11.5		45
50	8.9	8.8	8.9	9.6	9.4	9.3	10.2	9.9	9.7	10.7	10.3	10	11.1	10.7	10.3	11.4	11	10.5	50
55	8.4	8.3	8.4	9	8.9	8.9	9.7	9.4	9.3	10.2	9.8	9.6	10.7	10.2	9.9	11	10.6	10.2	55
60	7.9	7.9	7.9	8.6	8.4	8.4	9.2	8.9	8.8	9.7	9.4	9.2	10.2	9.8	9.5	10.6	10.1	9.8	60
65	7.5	7.5	7.5	8.1	8	8	8.7	8.5	8.4	9.3	9	8.8	9.8	9.4	9.1	10.2	9.7	9.4	65
70	7.1	7.1	7.2	7.7	7.6	7.7	8.3	8.1	8.1	8.9	8.6	8.5	9.4	9	8.8	9.9	9.4	9.1	70
75	6.7	6.7	6.8	7.4	7.3	7.3	8	7.8	7.7	8.5	8.2	8.1	9	8.6	8.5	9.5	9	8.8	75
80	6.4	6.4	6.5	7	6.9	7	7.6	7.4	7.4	8.2	7.9	7.8	8.6	8.3	8.2	9.1	8.7	8.5	80
85	6	6.1	6.1	6.7	6.6	6.7	7.3	7.1	7.1	7.8	7.6	7.5	8.3	8	7.9	8.8	8.4	8.2	85
90	5.7	5.7	5.9	6.4	6.3	6.4	7	6.8	6.9	7.5	7.3	7.2	8	7.7	7.6	8.5	8.1	7.9	90
95	5.5	5.5	5.6	6.1	6.1	6.1	6.7	6.6	6.6	7.2	7	7	7.7	7.4	7.3	8.2	7.8	7.7	95
100	5.2	5.3	5.4	5.8	5.8	5.9	6.4	6.3	6.3	6.9	6.8	6.7	7.4	7.2	7.1	7.9	7.6	7.4	100
105	5	5.1	5.2	5.6	5.5	5.6	6.1	6.1	6.1	6.6	6.5	6.5	7.1	6.9	6.9	7.6	7.3	7.2	105
110	4.8	4.9	5.2	5.3	5.3	5.5	5.9	5.8	5.9	6.4	6.3	6.3	6.9	6.7	6.7	7.3	7.1	7	110
115	4.6	4.6		5.1	5.2		5.6	5.6	5.7	6.1	6.1	6.1	6.6	6.5	6.4	7.1	6.8	6.8	115
120				4.9	5		5.4	5.4	5.5	5.9	5.8	5.9	6.4	6.2	6.2	6.8	6.6	6.6	120
125				4.7	4.8		5.2	5.2		5.7	5.6	5.7	6.2	6.1	6.1	6.6	6.4	6.4	125
130				4.5			5.1	5.1		5.5	5.5	5.5	5.9	5.8	5.9	6.4	6.2	6.2	130
135							4.9	4.9		5.3	5.3		5.8	5.6	5.7	6.2	6.1	6	135
140							4.7	4.8		5.2	5.1		5.6	5.5	5.6	6	5.9	5.9	140
145							4.5			5	5		5.4	5.4	5.4	5.8	5.7	5.7	145
150										4.8	4.9		5.2	5.2		5.6	5.5	5.6	150
155										4.7	4.7		5.1	5.1		5.5	5.4	5.5	155
160										4.5			4.9	5		5.3	5.3		160
165													4.8	4.8		5.2	5.1		165
170													4.6	4.7		5	5		170
175													4.5			4.9	4.9		175
180																4.7	4.8		180
185																4.6			185
190																4.5			190

t_253_003_50133_00_000

Lifting heights Hauteurs de levage

TVNZK



Lifting capacities Forces de levage

Crane Height	131 ft + 69 ft			146 ft + 69 ft			161 ft + 69 ft			176 ft + 69 ft			191 ft + 69 ft			203 ft + 69 ft			Crane Height
	35 ft			35 ft			35 ft			35 ft			35 ft			35 ft			
	0°	20°	40°	0°	20°	40°	0°	20°	40°	0°	20°	40°	0°	20°	40°	0°	20°	40°	
34	8.6																		34
36	8.8																		36
38	9			9.1															38
40	9.1			9.3															40
45	9.3			9.4			8.2												45
50	9.2	9.2		9.3	9.3		8.3			6.8									50
55	9	8.9	8.5	9.1	9.1		8.2	8.3		7			5.3			4			55
60	8.7	8.6	8.3	9	8.8	8.5	8.1	8.1		7.1	7.2		5.5			4.1			60
65	8.4	8.2	8	8.7	8.5	8.2	8	8	7.8	7	7.1		5.6	5.8		4.3			65
70	8.1	7.9	7.7	8.4	8.1	7.9	7.8	7.7	7.6	6.9	7	7	5.7	5.9		4.4	4.6		70
75	7.9	7.6	7.4	8.1	7.8	7.6	7.6	7.5	7.3	6.8	6.9	6.8	5.8	5.9	6	4.5	4.7		75
80	7.5	7.2	7.1	7.9	7.5	7.3	7.4	7.2	7	6.7	6.7	6.6	5.7	5.8	5.9	4.6	4.8	5	80
85	7.2	6.9	6.8	7.6	7.2	7	7.3	7	6.8	6.6	6.5	6.4	5.7	5.8	5.8	4.7	4.8	5	85
90	6.9	6.7	6.5	7.3	7	6.8	7	6.8	6.6	6.5	6.3	6.2	5.6	5.6	5.7	4.7	4.9	5	90
95	6.6	6.4	6.3	7	6.7	6.5	6.8	6.5	6.4	6.3	6.1	6	5.5	5.5	5.5	4.8	4.8	4.9	95
100	6.4	6.1	6	6.7	6.4	6.3	6.5	6.3	6.1	6.1	5.9	5.8	5.4	5.4	5.3	4.7	4.7	4.8	100
105	6.1	5.9	5.8	6.4	6.2	6.1	6.3	6.1	5.9	5.9	5.7	5.6	5.4	5.2	5.2	4.7	4.7	4.7	105
110	5.9	5.7	5.6	6.2	6	5.8	6.1	5.8	5.7	5.7	5.6	5.5	5.2	5.1	5	4.6	4.6	4.6	110
115	5.6	5.4	5.4	6	5.7	5.6	5.8	5.6	5.6	5.5	5.4	5.3	5.1	4.9	4.9	4.5	4.5	4.5	115
120	5.4	5.2	5.2	5.7	5.5	5.4	5.6	5.4	5.4	5.4	5.2	5.1	4.9	4.8	4.7	4.4	4.4	4.4	120
125	5.1	5	5	5.5	5.3	5.2	5.4	5.2	5.2	5.2	5	4.9	4.8	4.6	4.6	4.3	4.3	4.2	125
130	4.9	4.8	4.8	5.3	5.1	5.1	5.2	5.1	5	5	4.9	4.8	4.6	4.5	4.5	4.2	4.2	4.1	130
135	4.7	4.6	4.6	5.1	4.9	4.9	5	4.9	4.8	4.8	4.7	4.6	4.5	4.4	4.3	4.1	4	4	135
140	4.6	4.5	4.4	4.9	4.8	4.7	4.9	4.7	4.7	4.7	4.6	4.5	4.4	4.2	4.2	4	3.9	3.9	140
145	4.4	4.3	4.3	4.7	4.6	4.5	4.7	4.6	4.5	4.5	4.4	4.4	4.2	4.1	4.1	3.9	3.8	3.8	145
150	4.2	4.1	4.1	4.5	4.4	4.4	4.5	4.4	4.4	4.4	4.3	4.2	4.1	4	4	3.8	3.7	3.7	150
155	4	4	4	4.4	4.3	4.2	4.4	4.3	4.2	4.2	4.1	4.1	4	3.9	3.9	3.7	3.6	3.6	155
160	3.9	3.8	3.8	4.2	4.1	4.1	4.2	4.1	4.1	4.1	4	4	3.9	3.8	3.8	3.6	3.6	3.6	160
165	3.8	3.7	3.7	4	4	4	4.1	4	4	4	3.9	3.9	3.7	3.7	3.7	3.5	3.4	3.5	165
170	3.6	3.6	3.6	3.9	3.8	3.8	3.9	3.9	3.8	3.8	3.8	3.8	3.6	3.6	3.6	3.4	3.4	3.4	170
175	3.5	3.4	3.5	3.8	3.7	3.7	3.8	3.7	3.7	3.7	3.6	3.7	3.5	3.5	3.5	3.3	3.3	3.3	175
180	3.4	3.3	3.4	3.6	3.6	3.6	3.7	3.6	3.6	3.6	3.5	3.6	3.4	3.4	3.4	3.2	3.2	3.2	180
185	3.2	3.2	3.2	3.5	3.5	3.5	3.6	3.5	3.5	3.5	3.4	3.5	3.3	3.3	3.3		3.1	3.1	185
190	3.1	3.1		3.4	3.4	3.4	3.4	3.4	3.4	3.4	3.3	3.4	3.3	3.2	3.2	3	3.1		190
195	3	3		3.3	3.2	3.3	3.3	3.3	3.3	3.3	3.2	3.3		3.1	3.2			3	195
200	2.9	2.9		3.2	3.1		3.2	3.2	3.2	3.1	3.2	3.2			3.1				200
205	2.9	2.9		3.1	3		3.1	3.1	3.1	2.7	3	3.1							205
210	2.8	2.8		3	3		3	3	3.1		2.7	2.9							210
215	2.7	2.7		2.9	2.9		2.8	2.9				2.3							215
220	2.6	2.7		2.8	2.8		2.6	2.8											220
225	2.6			2.7	2.7			2.4											225
230				2.7	2.7														230
235				2.6															235
240				1.8															240

t_253_003_50199_00_000

Lifting capacities Forces de levage

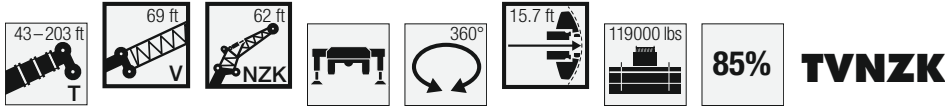


85% **TVNZK**

	131 ft + 69 ft			146 ft + 69 ft			161 ft + 69 ft			176 ft + 69 ft			191 ft + 69 ft			203 ft + 69 ft			
	62 ft			62 ft			62 ft			62 ft			62 ft			62 ft			
	0°	20°	40°	0°	20°	40°	0°	20°	40°	0°	20°	40°	0°	20°	40°	0°	20°	40°	
38	6.7																		38
40	6.7																		40
45	6.6			5.4															45
50	6.4			5.7			4.6												50
55	6.4			5.8			4.9			3.9									55
60	6.3			6			5			3.9			3.1						60
65	6.1	6.3		6.1			5.1			4.1			3.1			2.5			65
70	6	6		6.1	6.2		5.2			4.2			3.1			2.6			70
75	5.9	5.8		6	6		5.3	5.5		4.3			3.2			2.6			75
80	5.8	5.6	5.3	5.9	5.8		5.3	5.4		4.3	4.6		3.2			2.6			80
85	5.6	5.4	5.2	5.8	5.5	5.3	5.3	5.3		4.4	4.6		3.3	3.5		2.6			85
90	5.4	5.2	5	5.6	5.3	5.1	5.2	5.1	5	4.4	4.6		3.4	3.6		2.6	2.8		90
95	5.1	4.9	4.8	5.4	5.1	5	5.1	4.9	4.8	4.5	4.6	4.5	3.4	3.6		2.6	2.8		95
100	4.9	4.7	4.6	5.2	4.9	4.8	5	4.8	4.6	4.5	4.4	4.3	3.5	3.6	3.8	2.7	2.9		100
105	4.7	4.5	4.5	5	4.7	4.6	4.8	4.6	4.5	4.4	4.3	4.2	3.5	3.6	3.7	2.7	2.9	3.1	105
110	4.5	4.4	4.3	4.8	4.5	4.4	4.6	4.4	4.3	4.3	4.1	4.1	3.5	3.6	3.6	2.8	3	3.1	110
115	4.3	4.2	4.1	4.5	4.4	4.3	4.4	4.3	4.1	4.1	4	3.9	3.5	3.5	3.5	2.8	2.9	3.1	115
120	4.1	4	4	4.4	4.2	4.1	4.3	4.1	4	4	3.9	3.8	3.4	3.4	3.4	2.8	2.9	3	120
125	4	3.8	3.8	4.2	4	4	4.1	4	3.9	3.9	3.8	3.7	3.4	3.3	3.3	2.8	2.9	3	125
130	3.8	3.7	3.7	4	3.9	3.8	3.9	3.8	3.7	3.7	3.6	3.6	3.3	3.3	3.2	2.8	2.9	2.9	130
135	3.6	3.5	3.5	3.9	3.7	3.7	3.8	3.7	3.6	3.6	3.5	3.5	3.2	3.2	3.1	2.7	2.8	2.8	135
140	3.5	3.4	3.4	3.7	3.6	3.6	3.6	3.5	3.5	3.5	3.4	3.3	3.1	3.1	3	2.7	2.7	2.7	140
145	3.3	3.2	3.2	3.6	3.4	3.4	3.5	3.4	3.4	3.4	3.2	3.2	3	2.9	2.9	2.6	2.6	2.7	145
150	3.2	3.1	3.1	3.4	3.3	3.3	3.4	3.3	3.2	3.2	3.1	3.1	2.9	2.8	2.9	2.6	2.6	2.6	150
155	3	3	3	3.3	3.2	3.2	3.2	3.1	3.1	3.1	3	3	2.8	2.7	2.8	2.5	2.5	2.5	155
160	2.9	2.9	2.9	3.1	3.1	3	3.1	3	3	3	2.9	2.9	2.7	2.6	2.7	2.4	2.4	2.4	160
165	2.8	2.7	2.8	3	3	2.9	3	2.9	2.9	2.9	2.8	2.8	2.6	2.5	2.6	2.4	2.3	2.3	165
170	2.7	2.6	2.7	2.9	2.8	2.8	2.9	2.8	2.8	2.8	2.7	2.7	2.5	2.4	2.5	2.3	2.2	2.3	170
175	2.5	2.5	2.6	2.8	2.7	2.7	2.8	2.7	2.7	2.7	2.6	2.6	2.4	2.4	2.4	2.2	2.2	2.2	175
180	2.4	2.4	2.5	2.7	2.6	2.6	2.7	2.6	2.6	2.6	2.5	2.5	2.3	2.3	2.3	2.1	2.1	2.1	180
185	2.3	2.3	2.4	2.5	2.5	2.5	2.6	2.5	2.5	2.5	2.4	2.4	2.2	2.2	2.3	2	2	2.1	185
190	2.2	2.2	2.3	2.4	2.4	2.4	2.5	2.4	2.4	2.4	2.3	2.3	2.2	2.1	2.2		1.9	2	190
195	2.1	2.1	2.2	2.3	2.3	2.3	2.3	2.3	2.3	2.3	2.2	2.2		2	2.1		1.9	1.9	195
200	2.1	2.1	2.1	2.2	2.2	2.2	2.2	2.2	2.2	2.2	2.1	2.2		1.9	2		1.8	1.9	200
205	2	2	2	2.1	2.1	2.1	2.1	2.1	2.1	2.1	2	2.1		1.9	1.9				205
210	1.9	1.9	2	2	2	2	2	2	2.1		2	2		1.9					210
215	1.8	1.8	1.9	1.9	1.9	2	2	1.9	2		1.9	1.9							215
220	1.7	1.7	1.8	1.8	1.8	1.9	1.8	1.8	1.9			1.9							220
225	1.7	1.7		1.8	1.7	1.8	1.6	1.8	1.9			1.8							225
230	1.6	1.6		1.7	1.7	1.8	1.3	1.7	1.8										230
235	1.6	1.6		1.6	1.6				1.6										235
240	1.5	1.5		1.5	1.6														240
245	1.5	1.5		1.3	1.5														245
250	1.4	1.5			1.3														250
255	1.4																		255

L_253_003_50493_00_000

Lifting capacities Forces de levage

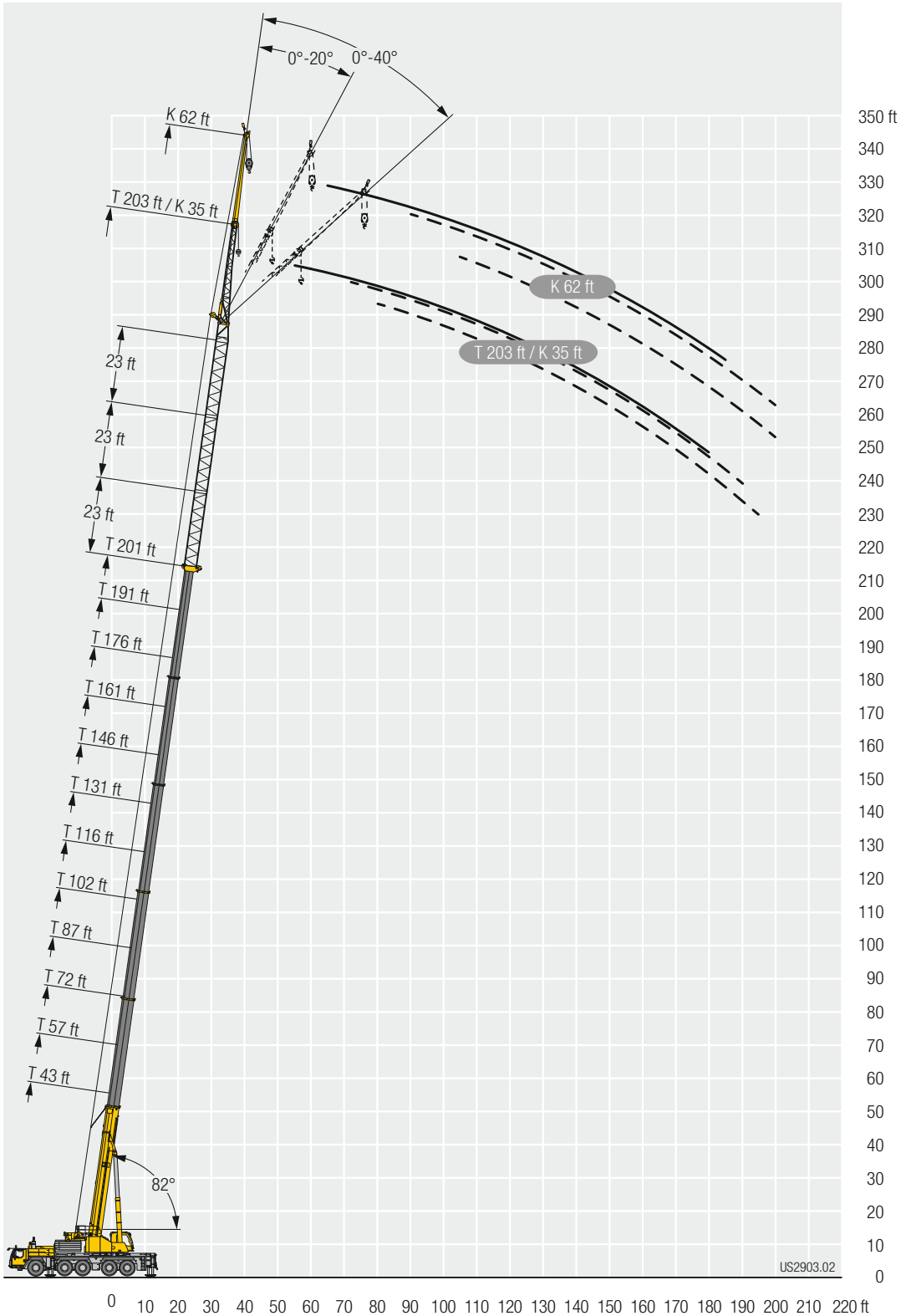


Jib ↕	131 ft + 69 ft			146 ft + 69 ft			161 ft + 69 ft			176 ft + 69 ft			191 ft + 69 ft			203 ft + 69 ft			Jib ↕
	62 ft			62 ft			62 ft			62 ft			62 ft			62 ft			
	0°	20°	40°	0°	20°	40°	0°	20°	40°	0°	20°	40°	0°	20°	40°	0°	20°	40°	
38	6.7																		38
40	6.7																		40
45	6.6			5.4															45
50	6.4			5.7			4.6												50
55	6.4			5.8			4.9			3.9									55
60	6.3			6			5			3.9			3.1						60
65	6.1	6.3		6.1			5.1			4.1			3.1			2.5			65
70	6	6		6.1	6.2		5.2			4.2			3.1			2.6			70
75	5.9	5.8		6	6		5.3	5.5		4.3			3.2			2.6			75
80	5.8	5.6	5.3	5.9	5.8		5.3	5.4		4.3	4.6		3.2			2.6			80
85	5.6	5.4	5.2	5.8	5.5	5.3	5.3	5.3		4.4	4.6		3.3	3.5		2.6			85
90	5.4	5.2	5	5.6	5.3	5.1	5.2	5.1	5	4.4	4.6		3.4	3.6		2.6	2.8		90
95	5.1	4.9	4.8	5.4	5.1	5	5.1	4.9	4.8	4.5	4.6	4.5	3.4	3.6		2.6	2.8		95
100	4.9	4.7	4.6	5.2	4.9	4.8	5	4.8	4.6	4.5	4.4	4.3	3.5	3.6	3.8	2.7	2.9		100
105	4.7	4.5	4.5	5	4.7	4.6	4.8	4.6	4.5	4.4	4.3	4.2	3.5	3.6	3.7	2.7	2.9	3.1	105
110	4.5	4.4	4.3	4.8	4.5	4.4	4.6	4.4	4.3	4.3	4.1	4.1	3.5	3.6	3.6	2.8	3	3.1	110
115	4.3	4.2	4.1	4.5	4.4	4.3	4.4	4.3	4.1	4.1	4	3.9	3.5	3.5	3.5	2.8	2.9	3.1	115
120	4.1	4	4	4.4	4.2	4.1	4.3	4.1	4	4	3.9	3.8	3.4	3.4	3.4	2.8	2.9	3	120
125	4	3.8	3.8	4.2	4	4	4.1	4	3.9	3.9	3.8	3.7	3.4	3.3	3.3	2.8	2.9	3	125
130	3.8	3.7	3.7	4	3.9	3.8	3.9	3.8	3.7	3.7	3.6	3.6	3.3	3.3	3.2	2.8	2.9	2.9	130
135	3.6	3.5	3.5	3.9	3.7	3.7	3.8	3.7	3.6	3.6	3.5	3.5	3.2	3.2	3.1	2.7	2.8	2.8	135
140	3.5	3.4	3.4	3.7	3.6	3.6	3.6	3.5	3.5	3.5	3.4	3.3	3.1	3.1	3	2.7	2.7	2.7	140
145	3.3	3.2	3.2	3.6	3.4	3.4	3.5	3.4	3.4	3.4	3.2	3.2	3	2.9	2.9	2.6	2.6	2.7	145
150	3.2	3.1	3.1	3.4	3.3	3.3	3.4	3.3	3.2	3.2	3.1	3.1	2.9	2.8	2.9	2.6	2.6	2.6	150
155	3	3	3	3.3	3.2	3.2	3.2	3.1	3.1	3.1	3	3	2.8	2.7	2.8	2.5	2.5	2.5	155
160	2.9	2.9	2.9	3.1	3.1	3	3.1	3	3	3	2.9	2.9	2.7	2.6	2.7	2.4	2.4	2.4	160
165	2.8	2.7	2.8	3	3	2.9	3	2.9	2.9	2.9	2.8	2.8	2.6	2.5	2.6	2.4	2.3	2.3	165
170	2.7	2.6	2.7	2.9	2.8	2.8	2.9	2.8	2.8	2.8	2.7	2.7	2.5	2.4	2.5	2.3	2.2	2.3	170
175	2.5	2.5	2.6	2.8	2.7	2.7	2.8	2.7	2.7	2.7	2.6	2.6	2.4	2.4	2.4	2.2	2.2	2.2	175
180	2.4	2.4	2.5	2.7	2.6	2.6	2.7	2.6	2.6	2.6	2.5	2.5	2.3	2.3	2.3	2.1	2.1	2.1	180
185	2.3	2.3	2.4	2.5	2.5	2.5	2.6	2.5	2.5	2.5	2.4	2.4	2.2	2.2	2.3	2	2	2.1	185
190	2.2	2.2	2.3	2.4	2.4	2.4	2.5	2.4	2.4	2.4	2.3	2.3	2.2	2.1	2.2		1.9	2	190
195	2.1	2.1	2.2	2.3	2.3	2.3	2.3	2.3	2.3	2.3	2.2	2.2		2	2.1			1.9	195
200	2.1	2.1	2.1	2.2	2.2	2.2	2.2	2.2	2.2	2.2	2.1	2.2		1.9	2			1.9	200
205	2	2	2	2.1	2.1	2.1	2.1	2.1	2.1	2.1	2	2.1		1.9	1.9				205
210	1.9	1.9	2	2	2	2	2	2	2.1		2	2			1.9				210
215	1.8	1.8	1.9	1.9	1.9	2	2	1.9	2		1.8	1.9							215
220	1.7	1.7	1.8	1.8	1.8	1.9	1.8	1.8	1.9			1.8							220
225	1.7	1.7		1.8	1.7	1.8		1.8	1.9			1.7							225
230	1.6	1.6		1.7	1.7	1.8		1.6	1.8										230
235	1.6	1.6		1.6	1.6				1.6										235
240	1.5	1.5		1.5	1.6														240
245	1.5	1.5			1.5														245
250	1.4	1.5																	250
255	1.4																		255

L_253_003_50210_00_000

Lifting heights Hauteurs de levage

TVNZK



Lifting capacities Forces de levage



85%

TK

	43 ft	57 ft	72 ft	87 ft	102 ft	116 ft	131 ft	146 ft	161 ft	176 ft	191 ft	203 ft	
	9.5 ft												
10	76.2	76.2											10
11	76.2	76.2											11
12	76.2	76.2	76.2										12
13	76.2	76.2	76.2										13
14	76.2	76.2	76.2	76.2									14
15	76.2	76.2	76.2	76.2									15
16	76.2	76.2	76.2	76.2									16
17	76.2	76.2	76.2	76.2	76.2								17
18	76.2	76.2	76.2	76.2	76.2	76.2							18
19	76.2	76.2	76.2	76.2	76.2	76.2							19
20	76.2	76.2	76.2	76.2	76.2	76.2	76.2						20
22	76.2	76.2	76.2	76.2	76.2	76.2	76.2						22
24	76.2	76.2	76.2	76.2	76.2	76.2	76.2	64.9					24
26	76.2	76.2	76.2	76.2	76.2	76.2	76.2	75.2					26
28	76.1	76.2	76.2	76.2	76.2	76.2	76.2	75.2	57.3				28
30	75.5	76.2	76.2	76.2	76.2	76.2	76.2	73.2	56.2				30
32	74.6	76.2	76.2	76.2	76.2	76.2	76.2	71.1	54.9	49.3			32
34	72.8	76.2	76.2	76.2	76.2	76.2	76.2	69	53.6	48.4			34
36	70.4	76.2	76.2	76.2	76.2	76	67	52.3	47.5	41.8			36
38	67.6	75.7	76.2	76.2	76.2	74.9	65.2	51	46.6	41.3			38
40	64	74.8	76.2	76.2	76.2	73.5	63.3	49.9	45.8	40.6	32		40
45	53.5	71.8	76	76.2	76.2	69.5	58.7	47.5	43.6	38.8	30.9	25.4	45
50		66.8	73.8	74.4	72.6	65.8	54.7	45.1	41.3	36.9	29.8	24.5	50
55		59.9	66.1	65.4	64.2	62.7	50.8	43	39.1	35.4	28.7	23.7	55
60		50.9	58.8	58.1	57.7	58	47.4	41.1	37.1	33.9	27.8	22.9	60
65			52.4	51.7	53	51.6	44.2	39	35	32.4	26.9	22.2	65
70			47	48.4	47.6	46.2	41.4	37	33.1	30.9	26	21.4	70
75			43.1	43.7	42.9	41.6	38.8	35	31.3	29.4	25.1	20.6	75
80				39.7	38.9	37.6	36	33	29.5	27.9	24.2	19.8	80
85				36.3	35.4	34.1	32.9	31.1	27.9	26.5	23.3	19	85
90				31.6	32.4	31	31.2	29.4	26.4	25.1	22.4	18.2	90
95					29.7	28.6	28.8	27.6	25	23.8	21.5	17.3	95
100					27.3	27.2	26.4	25.7	23.7	22.6	20.6	16.5	100
105					22.5	25.5	24.2	24.2	22.5	21.5	19.7	15.6	105
110						23.6	22.3	22.3	21.1	20.4	18.8	14.8	110
115						22.3	20.6	20.6	19.4	19.3	17.9	14	115
120							19.6	19	18.4	17.9	17	13.3	120
125							18.8	17.5	17.5	16.6	16.3	12.6	125
130							17.8	16.2	16.2	15.8	15.5	12	130
135								14.9	14.9	15.1	14.4	11.4	135
140								14.2	13.8	14.3	13.3	10.8	140
145								13.7	12.7	13.2	12.3	10.3	145
150									11.9	12.3	11.4	9.9	150
155									11.3	11.5	10.6	9.4	155
160									10.9	10.8	9.9	9	160
165										10.1	9.2	8.6	165
170										9.5	8.6	8.2	170
175										8.9	8	7.8	175
180											7.5	7.4	180
185											6.9	6.9	185
190											6.5	6.4	190
195												5.9	195
200												5.5	200
205												4.9	205

t_253_004_50045_00_000

Lifting capacities Forces de levage



	43 ft	57 ft	72 ft	87 ft	102 ft	116 ft	131 ft	146 ft	161 ft	176 ft	191 ft	203 ft	
	9.5 ft												
10	76.2	76.2											10
11	76.2	76.2											11
12	76.2	76.2	76.2										12
13	76.2	76.2	76.2										13
14	76.2	76.2	76.2	76.2									14
15	76.2	76.2	76.2	76.2									15
16	76.2	76.2	76.2	76.2									16
17	76.2	76.2	76.2	76.2	76.2								17
18	76.2	76.2	76.2	76.2	76.2	76.2							18
19	76.2	76.2	76.2	76.2	76.2	76.2							19
20	76.2	76.2	76.2	76.2	76.2	76.2	76.2						20
22	76.2	76.2	76.2	76.2	76.2	76.2	76.2						22
24	76.2	76.2	76.2	76.2	76.2	76.2	76.2	64.9					24
26	76.2	76.2	76.2	76.2	76.2	76.2	76.2	76.2					26
28	76.1	76.2	76.2	76.2	76.2	76.2	76.2	75.2	57.3				28
30	75.5	76.2	76.2	76.2	76.2	76.2	76.2	73.2	56.2				30
32	74.6	76.2	76.2	76.2	76.2	76.2	76.2	71.1	54.9	49.3			32
34	72.8	76.2	76.2	76.2	76.2	76.2	76.2	69	53.6	48.4			34
36	70.4	76.2	76.2	76.2	76.2	76	67	52.3	47.5	41.8			36
38	67.6	75.7	76.2	76.2	76.2	74.9	65.2	51	46.6	41.3			38
40	64	74.8	76.2	76.2	76.2	73.5	63.3	49.9	45.8	40.6	32		40
45	53.5	71.8	76	76.2	75.9	69.5	58.7	47.5	43.6	38.8	30.9	25.4	45
50		66.8	71.9	71.2	70	65.8	54.7	45.1	41.3	36.9	29.8	24.5	50
55		59.9	63.2	62.5	61.3	62	50.8	43	39.1	35.4	28.7	23.7	55
60		50.9	56.1	55.4	56.5	55.3	47.4	41.1	37.1	33.9	27.8	22.9	60
65			49.9	51.3	50.5	49.1	44.2	39	35	32.4	26.9	22.2	65
70			45.4	46	45.2	43.9	41.4	37	33.1	30.9	26	21.4	70
75			41.7	41.5	40.7	39.4	38.1	35	31.3	29.4	25.1	20.6	75
80				37.7	36.9	35.5	34.3	33	29.5	27.9	24.2	19.8	80
85				34.4	33.5	32.2	32.6	31.1	27.9	26.5	23.3	19	85
90				31.3	30.6	29.9	29.7	28.6	26.4	25.1	22.4	18.2	90
95					28	28.3	27.1	26.9	25	23.8	21.5	17.3	95
100					26.2	26	24.8	24.9	23.5	22.6	20.6	16.5	100
105					22.5	24.4	22.7	22.8	21.7	21.5	19.7	15.6	105
110						22.6	21.5	20.9	20.2	19.9	18.8	14.8	110
115						21	20.3	19.2	19.1	18.2	17.9	14	115
120							19.3	17.7	17.7	17.3	17	13.3	120
125							17.9	16.3	16.3	16.6	15.8	12.6	125
130							16.6	15.6	15	15.5	14.5	12	130
135								14.7	13.8	14.3	13.3	11.4	135
140								14.2	12.8	13.2	12.3	10.8	140
145								13.6	12.2	12.2	11.4	10.3	145
150									11.7	11.4	10.6	9.9	150
155									11.2	10.7	9.8	9.4	155
160									10.6	10	9.1	9	160
165										9.3	8.4	8.4	165
170										8.7	7.8	7.8	170
175										8.1	7.3	7.2	175
180											6.7	6.7	180
185											6.2	6.2	185
190											5.8	5.7	190
195												5.3	195
200												4.8	200
205												4.5	205

t_253_004_50001_00_000

Lifting heights Hauteurs de levage

TK

