

Mobile Crane / Grue mobile

LTM 1130-5.1



155 USt



197 ft



240 ft



299 ft

LIEBHERR

Mobile Crane/Grue mobile LTM 1130-5.1



197 ft



35 ft – 62 ft



2 x 23 ft



9.5 ft

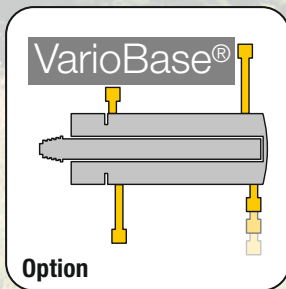


92,600 lbs

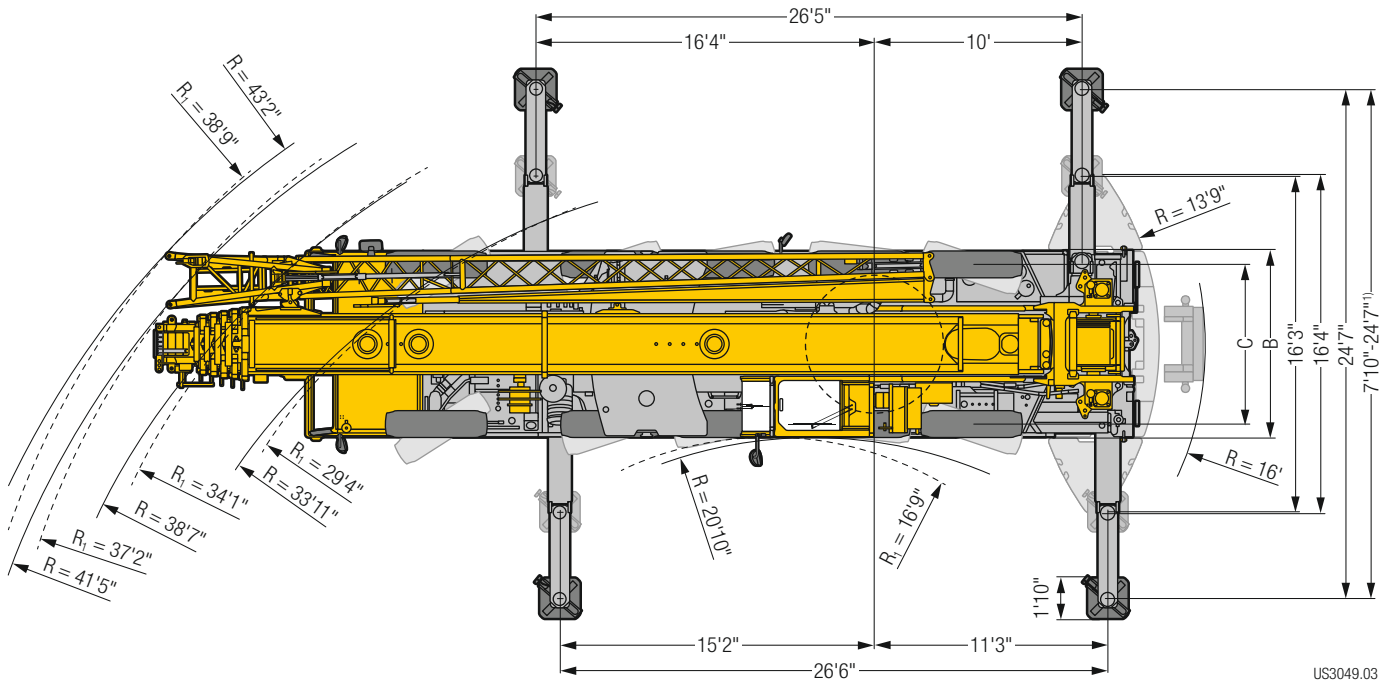
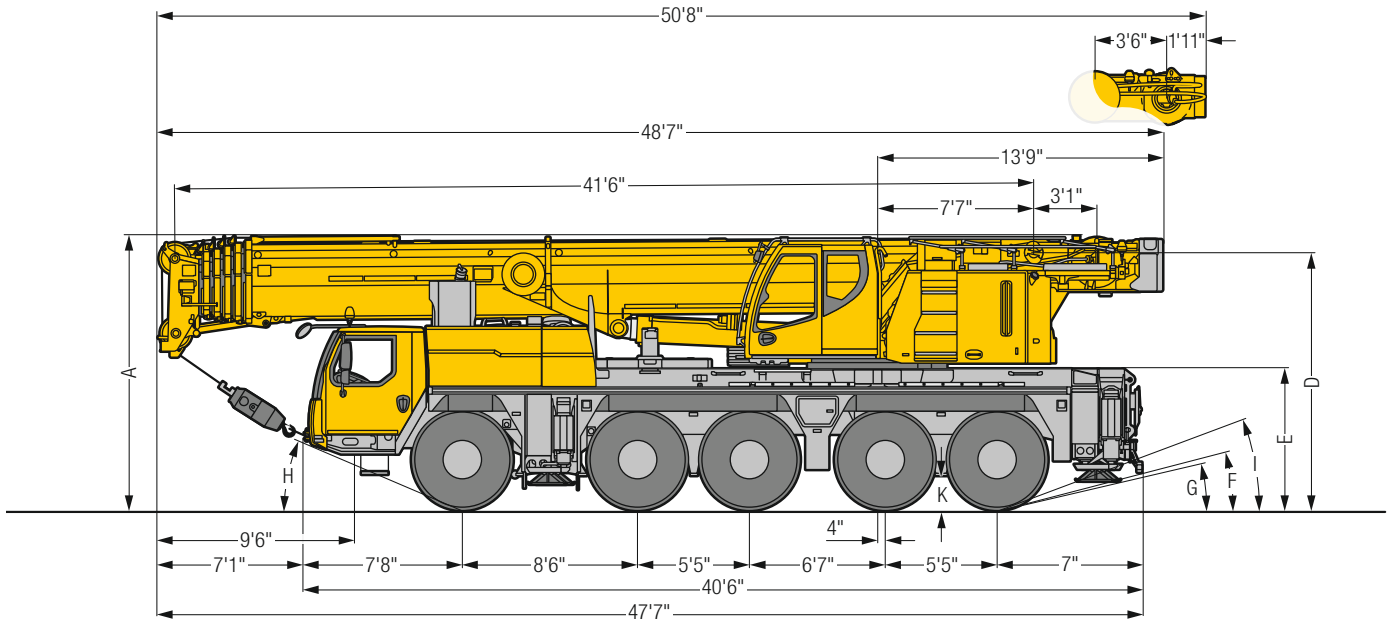
€COmode

€COdrive

only with
seulement avec ZF-TRAXON



Dimensions Encombrement



US3049.03





R₁ = All-wheel steering · Direction toutes roues ¹⁾ only with VarioBase® · seulement avec VarioBase®

Dimensions/Encombrement

	A	A 4" *	B	C	D	E	F	G	H	I	K
445/95 R 25 (16.00 R 25)	13'1"	12'10"	9'	7'7"	12'4"	6'9"	14°	13°	24°	20°	1'5"
525/80 R 25 (20.5 R 25)	13'1"	12'10"	9'4"	7'9"	12'4"	6'9"	14°	13°	24°	20°	1'5"





* lowered · abaissé

Hook block/Moufles à crochet

			
242,500 lbs	7	14	2,730 lbs
198,850 lbs	5	11	1,980 lbs
130,300 lbs	3	7	1,540 lbs
57,550 lbs	1	3	990 lbs
19,400 lbs	–	1	550 lbs

Working speeds Vitesses











Crane carrier/Châssis porteur

	 min.	 max.	 %
445/95 R 25 (16.00 R 25) 525/80 R 25 (20.5 R 25)	0.3	53	55,7 %

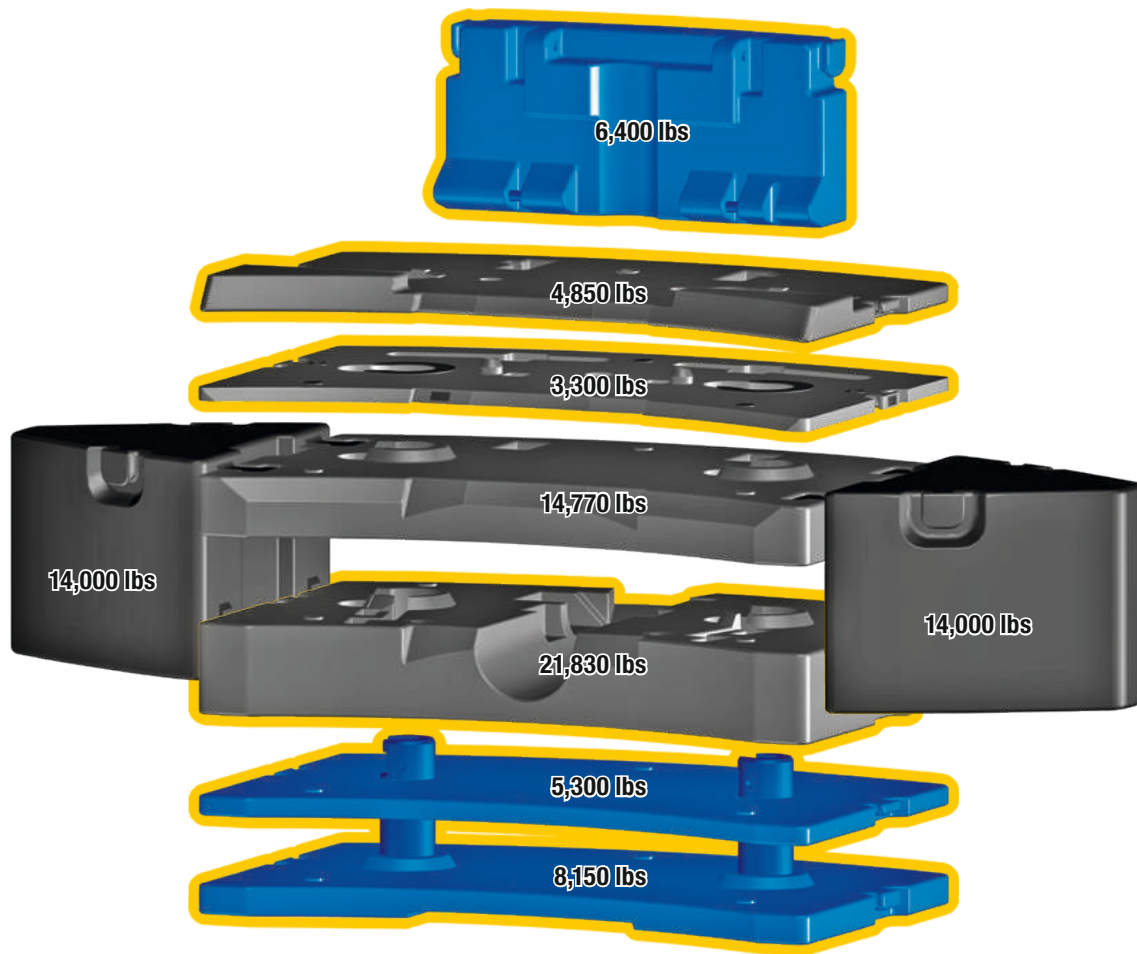
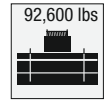
Theoretical gradeability/Aptitude théorique en pente

	
	12 / R2
	4 / R2

Crane superstructure/Partie tournante

	 max			 F
	0 – 360 ft/min single line	0.83"	820 ft	19,785 lbs
	0 – 360 ft/min single line	0.83"	820 ft	19,785 lbs
	0 – 1.5 rpm			
	approx. 65 seconds to reach 82° boom angle env. 65 s jusqu'à 82°			
	approx. 390 seconds for boom extension from 42 ft – 197 ft env. 390 s pour passer de 42 ft – 197 ft			

Counterweight Contrepoids

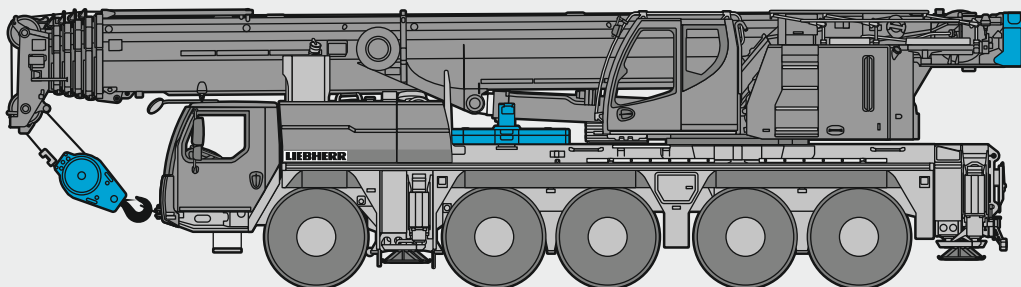


Technically transportable · Transport technique simplifié

Axle/Essieu

	1	2	3	4	5	
lbs	26,400	26,400	26,400	26,400	26,400	132,000 ¹⁾

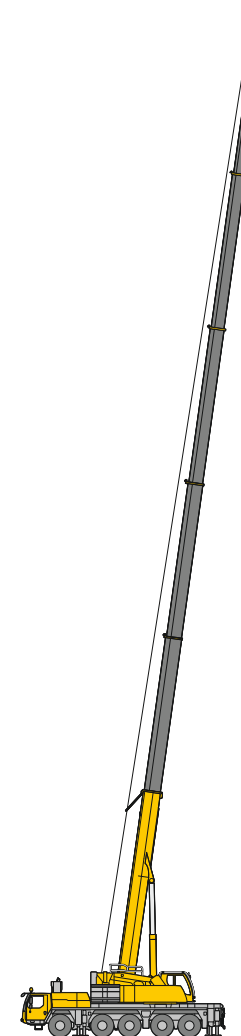
¹⁾ with 19,800 lbs counterweight · avec contrepoids 19,800 lbs



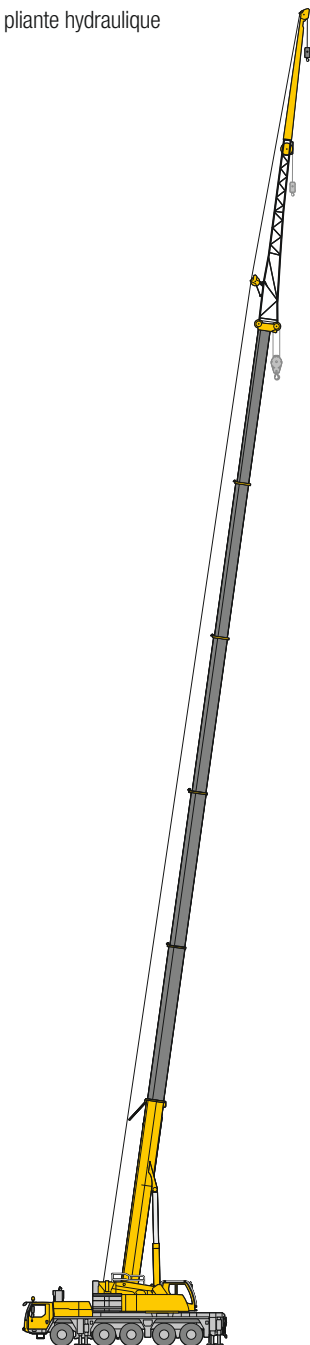
S3066.01

Boom/jib combinations Configurations de flèche

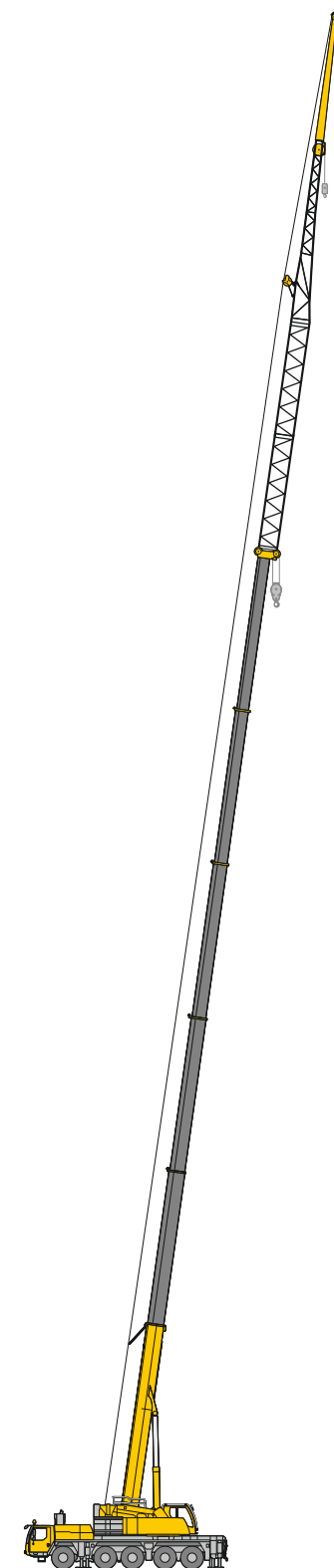
- T** Telescopic boom/Flèche télescopique
- K** Erection jib/Flechette de montage
- NZK** Hydraulic swing away jib/Fléchette pliante hydraulique
- V** Telescopic boom extension
Rallonge de flèche télescopique



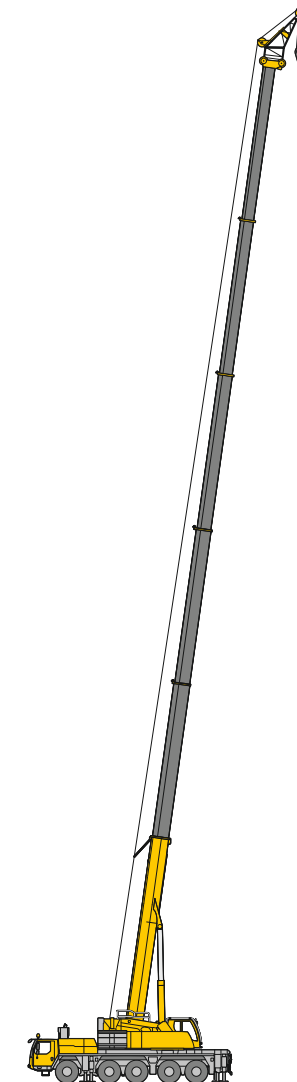
T
11 – 19



TK/TNZK
20 – 26 / 37 – 43



TVK/TVNZK
27 – 36 / 44 – 53

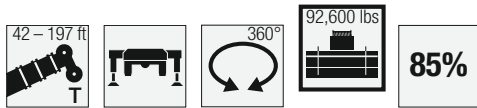


TK
54 – 56



S3064

Lifting capacities Forces de levage



T

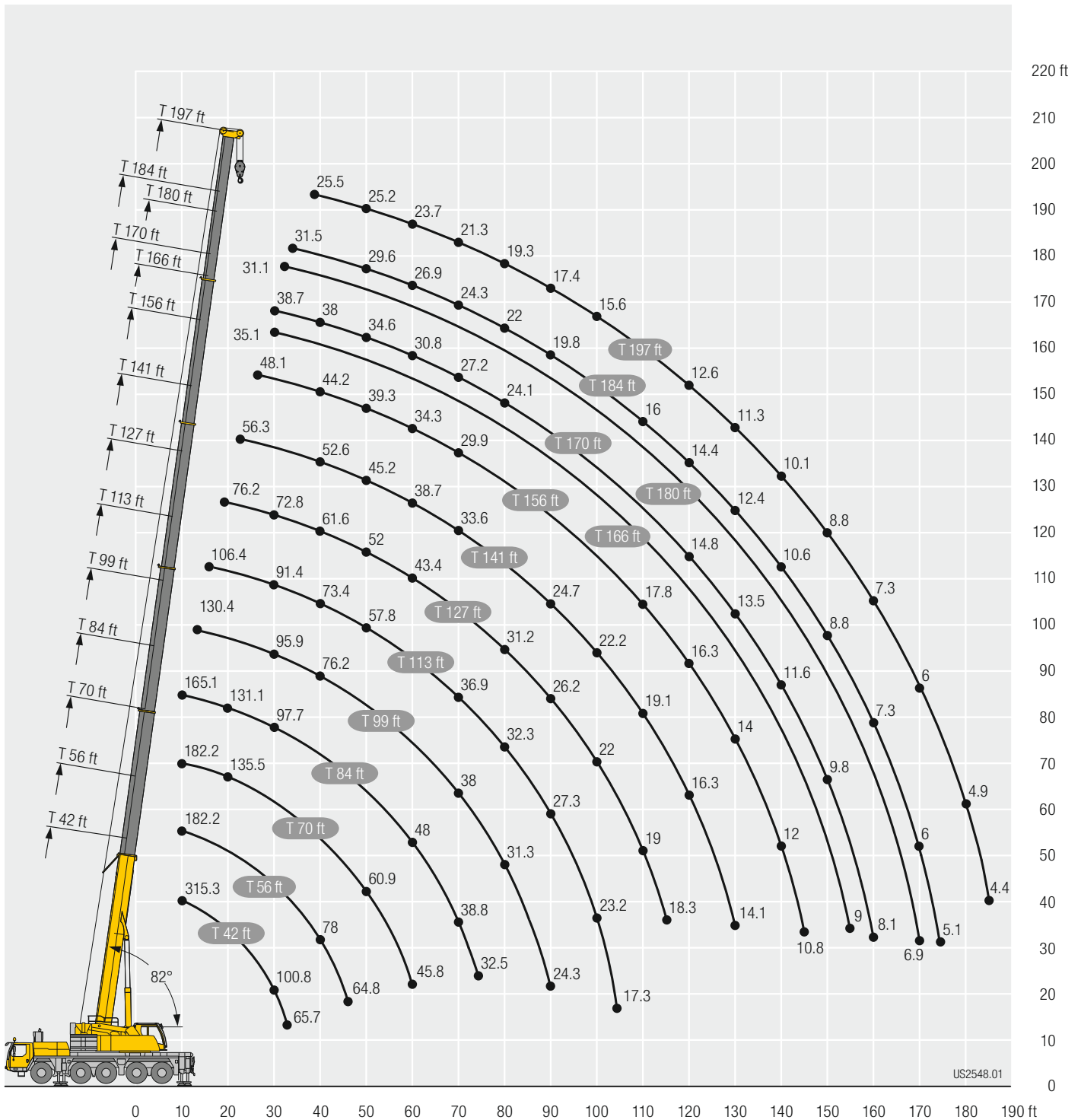
	* 42 ft		56 ft	70 ft	84 ft	99 ft	113 ft	127 ft	141 ft	156 ft	166 ft	170 ft	180 ft	184 ft	197 ft	
10	315.3	182.2	182.2	182.2	165.1											10
11	233.2	182.2	182.2	182.2	164											11
12	199.2	182.2	182.2	180.9	162.5											12
13	190.6	182.2	181.5	176.1	161	130.4										13
14	182.7	181.4	174.6	168.4	159	130.4										14
15	175.5	175.4	167.5	161.4	156.2	130.4										15
16	169	169	161.1	154.9	150.1	130.4	106.4									16
17	162.8	162.8	155	148.9	145.3	130.1	105.5									17
18	157	157	149.4	145.4	140.9	129.6	104.6									18
19	151.6	151.6	145.3	140.2	135.8	127.9	103.7	76.2								19
20	146.5	146.5	140.6	135.5	131.1	125.9	102.6	76.2								20
22	136.9	136.9	132	126.8	122.5	120.7	100.4	76.2	56.3							22
24	127.8	127.8	124.3	119.3	115	113.6	98.1	76.2	57.6							24
26	119	119	117.4	112.7	108.6	107	95.8	75.5	57.6	48.1						26
28	110.1	110.1	111	106.7	102.7	101.1	93.6	74.2	57.6	47.6						28
30	100.8	100.8	105.3	101.4	97.7	95.9	91.4	72.8	57.6	47.1	35.1	38.7				30
32	89.3	89.3	99.8	96.5	93.5	91.2	88.1	71	57.3	46.5	35.1	38.7	31.1			32
34	65.7	65.7	93.9	92	89.4	87	84	68.7	56.5	46	34.9	38.7	31	31.5		34
36			88.2	87.9	85.3	83	80.3	66.3	55.5	45.4	34.6	38.6	31	31.5		36
38			82.8	83.3	81.7	79.5	76.6	63.9	54.2	44.8	33.8	38.4	31	31.5	25.5	38
40			78	78.5	78.6	76.2	73.4	61.6	52.6	44.2	33.1	38	30.8	31.4	25.5	40
45			64.8	68	69.5	68.8	65.9	56.7	48.7	42	31.2	36.4	29.8	30.7	25.4	45
50				60.9	60.9	60.2	57.8	52	45.2	39.3	29.3	34.6	28.5	29.6	25.2	50
55				53.9	53.9	53.2	51	47.9	41.7	36.7	27.6	32.7	27	28.3	24.6	55
60				45.8	48	47.3	45.5	43.4	38.7	34.3	25.9	30.8	25.6	26.9	23.7	60
65					43	42.3	40.8	40.9	36	31.9	24.2	29	24.2	25.5	22.5	65
70					38.8	38	36.9	37.4	33.6	29.9	22.6	27.2	22.9	24.3	21.3	70
75					32.5	34.4	34.5	34.1	30.6	28	21.2	25.6	21.6	23.1	20.3	75
80						31.3	32.3	31.2	28.3	26.3	19.9	24.1	20.4	22	19.3	80
85						28.6	29.7	28.6	26.6	24.7	18.7	22.6	19.3	20.9	18.3	85
90						24.3	27.3	26.2	24.7	22.8	17.7	21.4	18.3	19.8	17.4	90
95							25.1	24	23.6	20.8	16.6	20.2	17.4	18.8	16.5	95
100							23.2	22	22.2	19.8	15.6	19.1	16.5	17.8	15.6	100
105							17.3	20.2	20.7	18.8	14.8	17.9	15.7	16.9	14.8	105
110								19	19.1	17.8	14	16.5	14.9	16	14	110
115								18.3	17.6	17	13.1	15.5	14.2	15.2	13.3	115
120									16.3	16.3	12.5	14.8	13.5	14.4	12.6	120
125									15.1	15.2	11.8	14.2	12.8	13.4	11.9	125
130									14.1	14	11.2	13.5	12.2	12.4	11.3	130
135										13	10.6	12.6	11.7	11.5	10.7	135
140										12	10.1	11.6	11.1	10.6	10.1	140
145										10.8	9.7	10.7	10.6	9.6	9.6	145
150											9.3	9.8	10	8.8	8.8	150
155											9	9.1	9.2	8	8	155
160												8.1	8.5	7.3	7.3	160
165													7.8	6.7	6.7	165
170													6.9	6	6	170
175														5.1	5.4	175
180															4.9	180
185															4.4	185

* over rear - en arrière

t_205_50001_00_000 / 50301_00_000

Lifting heights Hauteurs de levage

T



US2548.01

Lifting capacities Forces de levage



42 ft	99 ft			113 ft			127 ft			141 ft			156 ft			42 ft			
	0°	20°	40°	0°	20°	40°	0°	20°	40°	0°	20°	40°	0°	20°	40°				
14	38.7			38.7												14			
15	38.7			38.7												15			
16	38.7	37.6		38.7												16			
17	38.7	37.5		38.7												17			
18	38.7	37.3		38.7			38.7									18			
19	38.2	36.4		38.7			38.7									19			
20	37.6	35.7		38.7			38.7									20			
22	36.2	34.5		38.7			38.7			37.2						22			
24	34.8	33.2		38.7			38.7			37.1						24			
26	33.4	32	25.9	38.7			38.7			37			31.8			26			
28	31.9	30.8	25.5	38.7	33.4		38.7			36.7			31.7		19.5	28			
30	30.4	29.7	24.7	38.7	32.6		38.7	32.3		36.3			31.7		26.5	30			
32	28.9	28.6	24.1	38.7	31.8		38.7	31.7		35.8			31.4		26.4	32			
34	27.4	27.6	23.4	38.7	31		38.6	31		35.3	30		31.2		26.3	34			
36	25.9	26.7	22.9	38.7	30.4	24.2	37.9	30.4		34.8	29.6		30.8		26.2	36			
38	24.4	25.8	22.3	38.3	29.7	23.8	37.2	29.7	23.7	34.3	29		30.5	27.5	26.1	38			
40	23.2	24.5	21.8	37.6	29.1	23.5	36.5	29.2	23.5	33.9	28.5		30.2	27.1	25.9	40			
45	20.5	21.3	20	35.6	27.6	22.6	34.9	27.8	22.7	32.7	27.3	22.5	29.4	26.1	25.5	24.2	45		
50	18.3	19.3	18.4	33.6	26.2	21.9	33.4	26.6	22	31.5	26.3	21.8	28.6	25.2	21.4	25	23.5	50	
55	16.5	18.1	17.5	31.5	25.1	21.2	31.9	25.5	21.4	30.4	25.3	21.2	27.8	24.4	20.8	24.6	22.9	19.5	55
60	15	17.1	16.9	29.3	24	20.6	30.4	24.5	20.8	29.3	24.4	20.7	27.1	23.6	20.3	24	22.3	19.5	60
65	13.7	16.4	6.4	27.2	23	20	28.9	23.6	20.3	28.3	23.5	20.2	26.3	22.9	19.9	23.5	21.7	19.5	65
70				25	22.2	19.6	27.2	22.7	19.8	27.2	22.7	19.8	25.6	22.2	19.5	22.7	21.1	19.3	70
75				23.1	21.3	19.1	25.5	22	19.3	26.2	22	19.3	24.6	21.6	19.4	21.8	20.6	18.9	75
80				21.6	20.4	18.6	23.7	21.2	18.9	25	21.4	19	23.5	21	19.1	21	20.1	18.6	80
85				20.2	19.6	18.1	22.2	20.5	18.5	23.6	20.8	18.6	22.4	20.5	18.7	20	19.4	18.3	85
90				18.9	18.9	17.7	20.9	19.8	18.2	22.2	20.2	18.3	21.2	19.9	18.3	18.8	18.6	17.9	90
95				17.8	18.2	17.4	19.7	19.1	17.8	20.9	19.6	18	20.1	19.3	17.9	17.7	17.7	17.3	95
100				16.7	17.7	17.1	18.6	18.5	17.4	19.7	19	17.7	18.7	18.7	17.7	16.8	16.9	16.7	100
105				15.8	17.2	16.9	17.6	18	17.2	18.7	18.5	17.4	17.2	17.9	17.3	15.9	16	15.9	105
110				15	16.7	14	16.7	17.5	16.9	17.5	17.8	17.1	15.8	16.8	16.8	15	15.1	15.2	110
115				14.2	16.4		15.9	17	16.7	16.3	16.8	16.7	14.7	15.4	16	14.1	14.3	14.4	115
120				13.6	16.3		15.1	16.1	16.2	15	15.6	16	13.9	14.2	14.7	13	13.5	13.6	120
125				12.4			14.3	14.8		13.7	14.3	14.6	13.2	13.2	13.5	11.9	12.7	12.9	125
130							13.5	13.7		12.6	13.1	13.4	12.4	12.6	12.6	10.9	11.7	12.2	130
135							12.5	12.7		11.6	12		11.4	11.9	12.1	10.4	10.7	11.3	135
140							7.9			10.6	11		10.4	10.9	11.3	10	10	10.4	140
145										9.7	10		9.5	10	10.3	9.5	9.5	9.6	145
150										8.8	9.1		8.7	9.1		8.9	9.1	9.2	150
155													8.2	8.3		8.1	8.5	8.8	155
160													7.9	8		7.4	7.7		160
165													7.7	7.8		6.9	7		165
170																6.6	6.6		170
175																6.4	6.4		175
180																6			180

t_205_51101_00_000 / 51131_00_000 / 51161_00_000

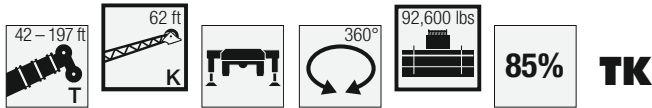
Lifting capacities Forces de levage



Crane Icon	166 ft			170 ft			180 ft			184 ft			197 ft			Crane Icon
	0°	20°	40°	0°	20°	40°	0°	20°	40°	0°	20°	40°	0°	20°	40°	
32	18.4			19.5												32
34	18.4			19.5			16.3									34
36	18.4			19.5			16.3			16.5						36
38	18.4			19.5			16.3			16.5						38
40	18.4			19.5			16.3			16.5			13.9			40
45	18.4			19.5			16.3			16.5			13.9			45
50	18.3	17.9		19.5	19.5		16.3	16		16.5	16.3		13.9			50
55	18.1	17.5		19.5	19.5		16.2	16		16.5	16.3		13.9	13.6		55
60	17.4	16.8	16.3	19.5	19.5	18.6	16.2	15.9	15.3	16.5	16.3		13.8	13.6		60
65	16.8	16.2	15.6	19.5	19.4	18.3	15.8	15.6	15.1	16.2	16.2	15.5	13.8	13.5	13.1	65
70	16.1	15.6	15.1	19.4	18.9	18	15.3	15	14.7	15.9	15.8	15.4	13.6	13.4	13.1	70
75	15.4	14.9	14.5	18.6	18.2	17.7	14.9	14.5	14.2	15.6	15.3	15.1	13.4	13.3	13.1	75
80	14.7	14.3	14	17.8	17.4	17.1	14.3	13.9	13.7	15.1	14.8	14.6	13.1	13	13	80
85	13.9	13.7	13.5	16.9	16.6	16.5	13.7	13.4	13.3	14.5	14.2	14.1	12.8	12.6	12.6	85
90	13.3	13	13	16.1	15.9	15.8	13.1	12.9	12.8	13.9	13.7	13.6	12.4	12.2	12.2	90
95	12.6	12.5	12.4	15.4	15.1	15.1	12.5	12.3	12.3	13.3	13.2	13.2	11.9	11.8	11.8	95
100	12	11.9	11.9	14.7	14.5	14.5	12	11.8	11.9	12.8	12.7	12.7	11.5	11.4	11.4	100
105	11.4	11.4	11.4	14	13.8	13.8	11.4	11.4	11.4	12.2	12.1	12.2	11	11	11	105
110	10.8	10.8	10.9	13.3	13.2	13.2	10.9	10.9	10.9	11.7	11.6	11.7	10.6	10.6	10.6	110
115	10.2	10.3	10.4	12.7	12.6	12.7	10.4	10.5	10.5	11.2	11.1	11.2	10.2	10.2	10.3	115
120	9.7	9.8	10	12	12.1	12.1	10	10	10.1	10.7	10.7	10.8	9.7	9.8	10	120
125	9.2	9.4	9.5	11.4	11.5	11.6	9.6	9.6	9.7	10.3	10.2	10.3	9.3	9.4	9.6	125
130	8.7	8.9	9.1	10.8	10.9	11.1	9.1	9.2	9.4	9.9	9.8	9.9	8.9	9	9.3	130
135	8.3	8.5	8.7	10.1	10.4	10.6	8.7	8.9	9	9.5	9.5	9.6	8.5	8.7	8.9	135
140	7.9	8.1	8.3	9.4	9.8	10.1	8.4	8.5	8.6	9.1	9.1	9.2	8.1	8.3	8.5	140
145	7.6	7.7	7.9	8.7	9.2	9.5	8	8.1	8.3	8.6	8.8	8.9	7.7	7.9	8.1	145
150	7.2	7.3	7.5	8.3	8.5	8.8	7.7	7.8	7.9	8.1	8.4	8.6	7.3	7.5	7.7	150
155	6.9	7	7.1	8	8	8.1	7.4	7.5	7.6	7.5	7.9	8.1	6.9	7.2	7.3	155
160	6.6	6.6	6.8	7.7	7.7	7.8	7.1	7.2	7.3	6.9	7.4	7.6	6.5	6.8	7	160
165	6.3	6.4	6.4	7.2	7.4	7.5	6.8	6.9	7	6.2	6.7	7	6	6.4	6.6	165
170	6	6.1		6.6	6.9		6.4	6.6	6.7	5.6	6.1	6.3	5.4	5.9	6.1	170
175	5.7	5.8		6	6.4		6	6.2	6.4	5	5.4	5.6	4.9	5.3	5.6	175
180	5.4	5.5		5.5	5.7		5.5	5.8		4.4	4.8	5	4.3	4.7	4.9	180
185	5.2	5.3		5	5.2		4.9	5.2		3.9	4.3		3.8	4.2	4.4	185
190	4.8			4.5	4.6		4.4	4.7		3.4	3.7		3.3	3.7	3.8	190
195				3.8			4	4.2		3	3.2		2.8	3.1		195
200							3.5	3.7		2.5	2.7		2.4	2.7		200
205							3			2.1	2.3		1.9	2.2		205
210										1.8				1.8		210

t_205_51101_00_000 / 51131_00_000 / 51161_00_000

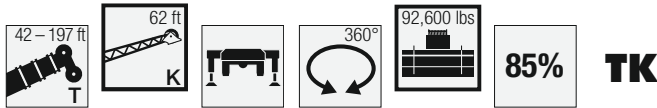
Lifting capacities Forces de levage



Height (ft)	42 ft			99 ft			113 ft			127 ft			141 ft			156 ft			Height (ft)
	0°	20°	40°	0°	20°	40°	0°	20°	40°	0°	20°	40°	0°	20°	40°	0°	20°	40°	
17	16.7																		17
18	16.6																		18
19	16.4																		19
20	16.3			14.2															20
22	16			14.1															22
24	15.7			14			13.5												24
26	15.3			13.9			13.4			12.6									26
28	14.9			13.7			13.3			12.5									28
30	14.5	11.7		13.6			13.2			12.5			12						30
32	14.1	11.6		13.5			13.1			12.4			11.9			11.9			32
34	13.7	11.4		13.3			12.9			12.3			11.8			11.8			34
36	13.3	11.1		13.1			12.8			12.2			11.7			11.7			36
38	13	10.8		12.9			12.6			12.1			11.6			11.6			38
40	12.6	10.6		12.8			12.5			11.9			11.5			11.5			40
45	11.8	10.1		12.3	10.3		12.1	10.2		11.7			11.3			11.4			45
50	11.1	9.7	8.7	11.9	10		11.8	10		11.4	9.8		11.1			11.2			50
55	10.4	9.3	8.5	11.5	9.7		11.5	9.7		11.1	9.6		10.8	9.6		11	9.6		55
60	9.9	9	8.3	11.2	9.5	8.4	11.1	9.5		10.8	9.4		10.6	9.4		10.7	9.5		60
65	9.3	8.8	8.1	10.8	9.2	8.3	10.8	9.3	8.2	10.5	9.2	8.2	10.4	9.2		10.5	9.3		65
70	8.7	8.5	8	10.4	9	8.2	10.5	9.1	8.1	10.3	9	8.1	10.2	9	8.1	10.3	9.1		70
75	8	8.3	7.9	10.1	8.9	8.1	10.2	8.9	8.1	10	8.9	8	9.9	8.9	8	10	8.9	8	75
80	7.5	8.1	7.9	9.8	8.7	8	9.9	8.7	8	9.8	8.7	8	9.7	8.7	7.9	9.8	8.8	7.9	80
85	7	8	7.9	9.5	8.5	7.9	9.6	8.6	7.9	9.6	8.6	7.9	9.6	8.6	7.9	9.7	8.7	7.9	85
90	6.5	7.9	7.9	9.3	8.4	7.8	9.4	8.4	7.8	9.4	8.4	7.8	9.4	8.4	7.8	9.5	8.6	7.8	90
95	6.1	7.9		9	8.3	7.8	9.2	8.3	7.8	9.2	8.3	7.8	9.2	8.3	7.8	9.3	8.4	7.8	95
100				8.6	8.1	7.7	9	8.2	7.8	9	8.2	7.7	9	8.2	7.7	9.2	8.3	7.7	100
105				8.3	8.1	7.7	8.7	8.1	7.7	8.8	8.1	7.7	8.9	8.1	7.7	9	8.2	7.7	105
110				7.9	8	7.7	8.4	8	7.7	8.6	8	7.7	8.7	8.1	7.7	8.9	8.1	7.7	110
115				7.6	7.9	7.7	8.1	8	7.7	8.4	7.9	7.7	8.5	8	7.7	8.7	8	7.6	115
120				7.3	7.8	7.7	7.8	7.9	7.7	8.1	7.9	7.7	8.4	7.9	7.7	8.6	8	7.6	120
125				7	7.7	7.7	7.5	7.8	7.7	7.9	7.9	7.7	8.2	7.9	7.7	8.4	7.9	7.6	125
130				6.8	7.6	7.7	7.3	7.8	7.7	7.6	7.8	7.7	7.9	7.8	7.7	8.3	7.8	7.6	130
135				6.6	7.4	7.5	7	7.7	7.7	7.4	7.6	7.7	7.7	7.8	7.7	8.1	7.8	7.6	135
140				6.4	7.1		6.8	7.6	7.7	7.1	7.4	7.7	7.4	7.7	7.7	7.9	7.7	7.6	140
145				6.2	6.8		6.6	7.4	7.6	6.9	7.2	7.4	7.2	7.5	7.6	7.7	7.7	7.6	145
150				6.1	6.6		6.4	7.2		6.7	7	7.2	7	7.3	7.5	7.5	7.7	7.6	150
155							6.2	7		6.5	6.7	6.9	6.9	7.1	7.3	7.3	7.6	7.6	155
160							6.1	6.8		6.3	6.5	6.6	6.7	6.9	7.1	7.1	7.4	7.6	160
165							6			6.1	6.3		6.5	6.7	6.8	6.9	7.3	7.5	165
170										5.9	6		6.3	6.5	6.6	6.7	7.1	7.3	170
175										5.7	5.8		6.2	6.3		6.4	6.9	7	175
180										5.6			6	6.1		5.9	6.5	6.7	180
185													5.9	5.9		5.4	5.9		185
190													5.7	5.8		5.1	5.4		190
195													4.8			4.9	5		195
200																4.7	4.8		200
205																4.6	4.7		205
210																2.6			210

t_205_51201_00_000 / 51231_00_000 / 51261_00_000

Lifting capacities Forces de levage

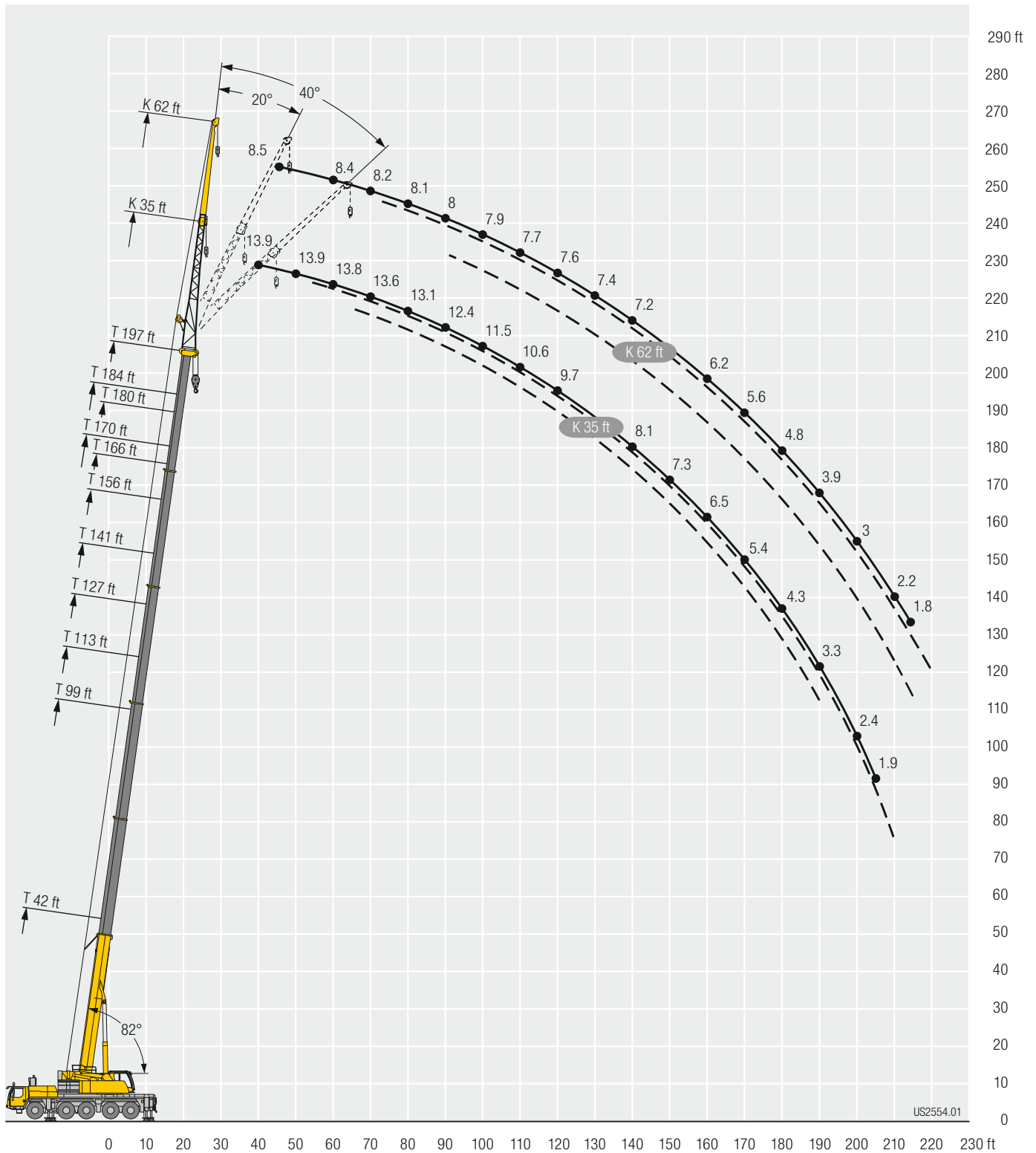


Height	166 ft			170 ft			180 ft			184 ft			197 ft			Height
	0°	20°	40°	0°	20°	40°	0°	20°	40°	0°	20°	40°	0°	20°	40°	
36	10.1			10.9												36
38	10.1			10.8												38
40	10.1			10.8			9.4			9.5						40
45	9.9			10.6			9.3			9.4			8.5			45
50	9.8			10.5			9.3			9.3			8.5			50
55	9.7			10.3			9.2			9.2			8.4			55
60	9.6	8.9		10.2	9.2		9.1			9.2			8.4			60
65	9.5	8.8		10	9		9	8.5		9.1	8.5		8.3			65
70	9.3	8.7		9.8	8.9		8.9	8.4		9	8.4		8.2	7.8		70
75	9.2	8.6		9.6	8.8		8.8	8.3		8.9	8.3		8.2	7.8		75
80	9	8.4	7.8	9.5	8.7	7.9	8.7	8.2		8.8	8.2		8.1	7.8		80
85	8.9	8.3	7.8	9.3	8.6	7.8	8.6	8.1	7.6	8.6	8.1	7.7	8	7.7		85
90	8.8	8.2	7.7	9.2	8.4	7.8	8.5	8.1	7.6	8.6	8.1	7.6	8	7.7	7.5	90
95	8.7	8.1	7.7	9	8.3	7.7	8.4	8	7.6	8.5	8	7.6	7.9	7.7	7.4	95
100	8.6	8.1	7.6	8.9	8.2	7.7	8.3	7.9	7.6	8.4	7.9	7.6	7.9	7.6	7.4	100
105	8.5	8	7.6	8.8	8.1	7.7	8.2	7.9	7.5	8.3	7.9	7.5	7.8	7.6	7.4	105
110	8.4	7.9	7.6	8.7	8	7.6	8.2	7.8	7.5	8.2	7.8	7.5	7.7	7.5	7.4	110
115	8.3	7.8	7.6	8.6	8	7.6	8.1	7.8	7.5	8.1	7.8	7.5	7.7	7.5	7.4	115
120	8.2	7.8	7.6	8.5	7.9	7.6	8	7.7	7.5	8	7.7	7.5	7.6	7.4	7.4	120
125	8	7.7	7.6	8.3	7.8	7.6	7.9	7.7	7.5	8	7.7	7.5	7.5	7.4	7.4	125
130	7.7	7.6	7.6	8.2	7.8	7.6	7.8	7.6	7.5	7.9	7.6	7.5	7.4	7.4	7.4	130
135	7.5	7.5	7.5	8.1	7.7	7.6	7.6	7.5	7.5	7.8	7.6	7.5	7.3	7.3	7.4	135
140	7.2	7.4	7.5	7.9	7.7	7.6	7.4	7.4	7.5	7.6	7.5	7.5	7.2	7.3	7.4	140
145	7	7.2	7.4	7.8	7.6	7.6	7.2	7.2	7.4	7.4	7.4	7.5	7.1	7.2	7.3	145
150	6.7	6.9	7.2	7.6	7.6	7.6	6.9	7	7.2	7.3	7.3	7.5	6.8	7	7.2	150
155	6.4	6.7	6.9	7.4	7.6	7.6	6.6	6.8	7	7.1	7.2	7.4	6.5	6.8	7	155
160	6.1	6.4	6.6	7.1	7.6	7.6	6.4	6.6	6.8	6.8	7	7.2	6.2	6.6	6.8	160
165	5.8	6.1	6.3	6.6	7.2	7.5	6.2	6.4	6.6	6.5	6.8	7	5.9	6.3	6.6	165
170	5.6	5.8	6	6.3	6.8	7.3	5.9	6.1	6.4	6.1	6.6	6.8	5.6	6.1	6.3	170
175	5.3	5.5	5.7	6.1	6.2	6.7	5.7	5.9	6.1	5.6	6.2	6.6	5.2	5.8	6	175
180	5.1	5.3	5.5	5.9	6	6.2	5.4	5.6	5.8	5.1	5.8	6.2	4.8	5.4	5.7	180
185	4.8	5	5.2	5.5	5.8	6	5.2	5.4	5.6	4.6	5.4	5.8	4.3	5	5.5	185
190	4.6	4.8	4.9	5.1	5.6	5.7	5	5.2	5.4	4.1	4.9	5.3	3.9	4.6	5	190
195	4.4	4.6		4.7	5.2	5.4	4.6	5	5.1	3.7	4.4	4.7	3.5	4.2	4.6	195
200	4.2	4.3		4.2	4.7		4.1	4.7	4.8	3.2	3.8	4.1	3	3.7	4.1	200
205	4	4.1		3.8	4.2		3.7	4.2		2.8	3.4	3.6	2.6	3.2	3.6	205
210	3.8	3.9		3.4	3.7		3.3	3.8		2.4	2.9		2.2	2.8	3.1	210
215	3.7	3.7		3.1	3.3		2.9	3.3		2	2.5		1.8	2.4	2.5	215
220	1.8			2.7	2.9		2.6	2.9			2.1			1.9		220
225							2.3	2.5								225
230							2	2.1								230

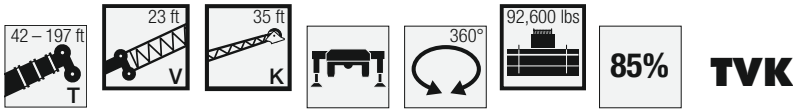
t_205_51201_00_000 / 51231_00_000 / 51261_00_000

Lifting heights Hauteurs de levage

TK



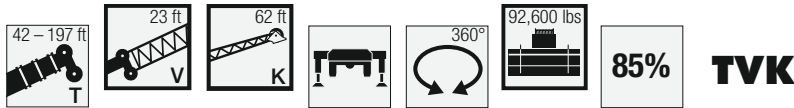
Lifting capacities Forces de levage



Crane Model	42 ft + 23 ft			156 ft + 23 ft			166 ft + 23 ft			170 ft + 23 ft			180 ft + 23 ft			184 ft + 23 ft			197 ft + 23 ft			Crane Model	
	35 ft																						
	0°	20°	40°	0°	20°	40°	0°	20°	40°	0°	20°	40°	0°	20°	40°	0°	20°	40°	0°	20°	40°		
14	14.6																					14	
15	14.6																					15	
16	14.5																					16	
17	14.5																					17	
18	14.5																					18	
19	14.5																					19	
20	14.4	14.6																				20	
22	14.3	14.5																				22	
24	14.1	14.4																				24	
26	13.8	14																				26	
28	13.4	13.5																				28	
30	13	13.1	12.6																			30	
32	12.6	12.6	12.6																			32	
34	12.2	12.2	12.4	14.6																		34	
36	11.8	11.8	12	14.6																		36	
38	11.4	11.4	11.5	14.6			12.6			12.9												38	
40	11	11	11.2	14.6			12.6			12.9			11									40	
45	10.1	10.2	10.3	14.5			12.6			12.9			11			11.2				9.5		45	
50	9.2	9.6	9.7	14.4	14.2		12.5			12.9			11			11.2				9.5		50	
55	8.3	8.9	9.1	14.3	13.7		12.5	12.3		12.8	12.8		11	11		11.2				9.4		55	
60	7.6	8.3	8.6	14.1	13.1	12.3	12.4	12		12.7	12.6		11	11		11.2	11.2			9.4	9.5	60	
65	6.9	7.5	8	13.6	12.6	11.9	12.2	11.6	11	12.6	12.2	11.6	11	10.9	10.6	11.2	11.2			9.4	9.5	65	
70	6.2	6.8	7.2	13.2	12.2	11.4	11.9	11.2	10.6	12.4	11.7	11.2	10.9	10.7	10.3	11.1	11.1	10.7		9.4	9.5	9.3	70
75	5.7	6.1	6.4	12.7	11.7	11.1	11.6	10.8	10.3	12.1	11.4	10.8	10.8	10.4	10	11	10.8	10.4		9.4	9.5	9.3	75
80	5.2	5.5	5.7	12.2	11.3	10.7	11.2	10.4	10	11.9	11	10.5	10.6	10.1	9.8	10.9	10.5	10.1		9.4	9.4	9.2	80
85	4.7	4.9	5	11.8	10.9	10.3	10.8	10.1	9.7	11.5	10.7	10.2	10.3	9.8	9.5	10.7	10.2	9.9		9.3	9.3	9.1	85
90	4.3	4.4		11.3	10.5	10	10.4	9.8	9.5	11.1	10.3	9.9	10.1	9.6	9.3	10.5	10	9.6		9.2	9.1	8.9	90
95				10.9	10.1	9.7	10	9.5	9.2	10.8	10	9.6	9.8	9.4	9.1	10.3	9.7	9.4		9.1	8.9	8.7	95
100				10.5	9.8	9.5	9.6	9.3	9	10.4	9.7	9.4	9.5	9.1	8.9	10	9.5	9.2		8.9	8.8	8.6	100
105				10	9.6	9.3	9.3	9	8.8	10	9.5	9.2	9.1	8.9	8.7	9.7	9.3	9		8.7	8.6	8.4	105
110				9.6	9.3	9	8.9	8.8	8.6	9.7	9.2	9	8.9	8.7	8.5	9.4	9	8.8		8.5	8.4	8.3	110
115				9.2	9	8.8	8.6	8.5	8.4	9.3	9	8.8	8.6	8.4	8.3	9.1	8.9	8.6		8.3	8.2	8.1	115
120				8.8	8.7	8.6	8.3	8.3	8.2	8.9	8.8	8.6	8.3	8.2	8.1	8.8	8.7	8.5		8	8	7.9	120
125				8.4	8.5	8.4	8	8	8	8.6	8.5	8.4	8	8	8	8.5	8.5	8.3		7.8	7.8	7.8	125
130				8	8.1	8.1	7.6	7.7	7.8	8.3	8.2	8.3	7.7	7.7	7.8	8.2	8.2	8.1		7.6	7.5	7.6	130
135				7.7	7.8	7.8	7.3	7.4	7.5	7.9	8	8.1	7.4	7.4	7.5	7.9	7.9	7.9		7.3	7.3	7.4	135
140				7.3	7.4	7.6	7	7.1	7.2	7.6	7.7	7.8	7.1	7.2	7.3	7.6	7.7	7.7		7	7.1	7.2	140
145				7	7.1	7.2	6.6	6.8	6.9	7.3	7.4	7.5	6.9	7	7	7.4	7.4	7.5		6.8	6.8	7	145
150				6.7	6.8	6.9	6.3	6.5	6.6	7	7.1	7.2	6.6	6.7	6.8	7.1	7.1	7.3		6.5	6.6	6.8	150
155				6.4	6.5	6.6	6	6.2	6.3	6.7	6.8	6.9	6.3	6.4	6.6	6.8	6.9	7		6.2	6.4	6.5	155
160				6.2	6.2	6.3	5.7	5.9	6	6.5	6.6	6.6	6.1	6.2	6.3	6.4	6.6	6.7		5.9	6.1	6.3	160
165				5.9	6	6.1	5.5	5.6	5.7	6.2	6.3	6.4	5.8	5.9	6	6	6.3	6.5		5.6	5.8	6	165
170				5.6	5.7	5.8	5.2	5.3	5.4	6	6.1	6.1	5.6	5.7	5.8	5.5	5.9	6.1		5.1	5.5	5.7	170
175				5.4	5.5	5.5	4.9	5.1	5.1	5.8	5.8	5.9	5.3	5.4	5.5	5	5.5	5.7		4.6	5.1	5.4	175
180				5.1	5.2		4.7	4.8	4.9	5.4	5.6	5.7	5.1	5.2	5.3	4.5	5	5.2		4.2	4.6	4.9	180
185				4.9	5		4.5	4.6	4.6	5	5.3	5.4	4.9	5	5	4	4.4	4.7		3.7	4.2	4.4	185
190				4.7	4.8		4.2	4.3		4.5	4.8		4.5	4.7	4.8	3.5	3.9	4.1		3.3	3.7	3.9	190
195				4.5	4.6		4	4.1		4	4.3		4	4.3	4.4	3	3.4	3.6		2.8	3.2	3.4	195
200				4.3	4.4		3.8	3.9		3.6	3.9		3.5	3.8		2.6	2.9	3.1		2.4	2.8	3	200
205				3.2			3.6	3.7		3.2	3.4		3.1	3.4		2.2	2.5			2	2.3	2.5	205
210							3.4	3.5		2.8	2.9		2.7	2.9		1.8	2				1.9	2	210
215							2.4			2.5	2.5		2.3	2.5									215
220													2	2.1									220

t_205_51301_00_000 / 51331_00_000 / 51361_00_000

Lifting capacities Forces de levage

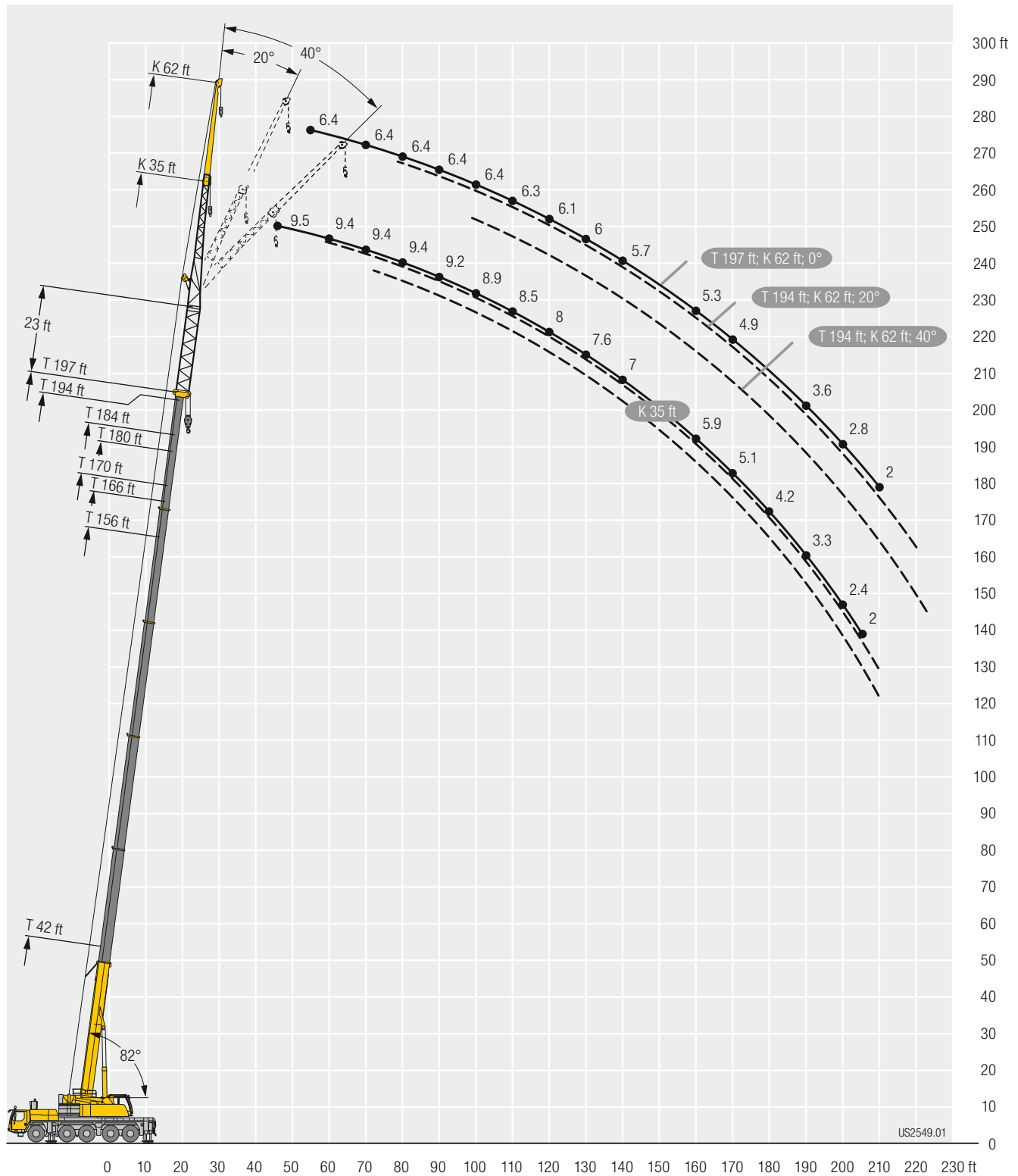


Height (ft)	42 ft + 23 ft			156 ft + 23 ft			166 ft + 23 ft			170 ft + 23 ft			180 ft + 23 ft			184 ft + 23 ft			194 ft + 23 ft			197 ft + 23 ft	Height (ft)
	0°	20°	40°	0°	20°	40°	0°	20°	40°	0°	20°	40°	0°	20°	40°	0°	20°	40°	0°	20°	40°	0°	
17	9.2																						17
18	9.2																						18
19	9.2																						19
20	9.1																						20
22	9.1																						22
24	9.1																						24
26	9																						26
28	9																						28
30	8.9																						30
32	8.8																						32
34	8.8	8.5																					34
36	8.7	8.5																					36
38	8.6	8.5																					38
40	8.5	8.5		9.2																			40
45	8.2	8.3		9.1			8.1			8.3													45
50	7.8	7.9	7.7	9.1			8.1			8.3			7.4			7.5			6.6				50
55	7.4	7.5	7.7	9			8.1			8.3			7.4			7.5			6.6			6.4	55
60	7	7.1	7.3	9			8.1			8.3			7.4			7.5			6.6			6.4	60
65	6.6	6.7	6.9	8.9	8.3		8.1			8.2			7.4			7.4			6.6			6.4	65
70	6.3	6.3	6.5	8.8	8.3		8.1	7.9		8.2	8.1		7.4			7.4			6.6			6.4	70
75	6	6	6.2	8.7	8.3		8	7.8		8.2	8		7.3	7.1		7.4	7.3		6.6			6.4	75
80	5.6	5.7	5.9	8.6	8.1		7.9	7.7		8.1	7.9		7.3	7.1		7.4	7.3		6.6	6.4		6.4	80
85	5.2	5.5	5.6	8.5	7.9	7.5	7.9	7.5		8.1	7.7		7.3	7.1		7.3	7.3		6.6	6.4		6.4	85
90	4.8	5.2	5.4	8.3	7.7	7.3	7.7	7.3	6.9	8	7.6	7.2	7.3	7.1	6.7	7.3	7.3		6.5	6.4		6.4	90
95	4.4	4.9	5.2	8.1	7.5	7.1	7.6	7.1	6.8	7.8	7.4	7	7.2	6.9	6.7	7.3	7.1	6.8	6.5	6.4	6.1	6.4	95
100	4	4.5	4.9	7.8	7.3	6.9	7.4	6.9	6.6	7.7	7.2	6.8	7.1	6.7	6.5	7.2	7	6.7	6.5	6.4	6.1	6.4	100
105	3.7	4.1	4.4	7.6	7.1	6.7	7.2	6.7	6.4	7.5	7	6.7	7	6.6	6.3	7.1	6.8	6.5	6.5	6.3	6.1	6.4	105
110	3.4	3.7	3.8	7.4	6.9	6.6	7	6.5	6.3	7.3	6.8	6.5	6.8	6.4	6.2	7	6.6	6.4	6.4	6.2	6	6.3	110
115	3.1	3.3		7.2	6.7	6.4	6.8	6.4	6.1	7.1	6.6	6.4	6.7	6.3	6.1	6.9	6.5	6.2	6.3	6.1	5.9	6.2	115
120				7	6.5	6.3	6.6	6.2	6	6.9	6.4	6.2	6.5	6.1	6	6.7	6.3	6.1	6.2	6	5.8	6.1	120
125				6.8	6.3	6.1	6.5	6.1	5.9	6.8	6.3	6.1	6.4	6	5.8	6.6	6.2	6	6.1	5.8	5.7	6	125
130				6.6	6.2	6	6.3	5.9	5.8	6.6	6.1	6	6.2	5.8	5.7	6.5	6.1	5.9	6	5.7	5.6	6	130
135				6.4	6	5.9	6.1	5.8	5.6	6.4	6	5.9	6.1	5.7	5.6	6.3	5.9	5.8	5.9	5.6	5.5	5.9	135
140				6.3	5.9	5.7	5.9	5.6	5.5	6.3	5.9	5.7	5.9	5.6	5.5	6.2	5.8	5.7	5.8	5.5	5.4	5.7	140
145				6.1	5.7	5.6	5.8	5.5	5.4	6.1	5.7	5.6	5.8	5.5	5.4	6	5.7	5.6	5.7	5.4	5.3	5.6	145
150				5.9	5.6	5.5	5.6	5.4	5.3	6	5.6	5.5	5.6	5.4	5.3	5.9	5.6	5.5	5.5	5.3	5.2	5.5	150
155				5.7	5.5	5.4	5.4	5.3	5.2	5.8	5.5	5.4	5.5	5.2	5.2	5.7	5.5	5.4	5.4	5.2	5.1	5.4	155
160				5.5	5.4	5.3	5.3	5.1	5.1	5.7	5.4	5.3	5.3	5.2	5.1	5.6	5.4	5.3	5.3	5.1	5	5.3	160
165				5.3	5.3	5.2	5	5	5	5.5	5.3	5.2	5.1	5.1	5	5.4	5.3	5.2	5.1	5	5	5.1	165
170				5.1	5.1	5.1	4.8	4.9	5	5.3	5.2	5.2	5	4.9	5	5.3	5.2	5.1	5	4.9	4.9	4.9	170
175				4.9	4.9	5.1	4.6	4.8	4.9	5.1	5.1	5.1	4.8	4.8	4.9	5.1	5.1	5.1	4.8	4.8	4.8	4.7	175
180				4.7	4.8	4.9	4.4	4.6	4.7	4.9	5	5	4.6	4.7	4.8	4.7	5	5	4.6	4.7	4.8	4.4	180
185				4.5	4.6	4.8	4.1	4.4	4.5	4.7	4.8	4.9	4.4	4.6	4.7	4.3	4.8	4.9	4.2	4.6	4.7	4	185
190				4.3	4.4	4.5	3.9	4.2	4.3	4.5	4.7	4.8	4.2	4.4	4.6	3.9	4.5	4.9	3.8	4.4	4.5	3.6	190
195				4.1	4.2	4.3	3.7	3.9	4.1	4.4	4.5	4.6	4	4.2	4.4	3.5	4.2	4.6	3.3	4.1	4.4	3.1	195
200				3.9	4	4.1	3.6	3.7	3.9	4.1	4.3	4.4	3.8	4	4.2	3.1	3.8	4.2	3	3.7	4.1	2.8	200
205				3.7	3.8		3.4	3.5	3.6	3.7	4.1	4.2	3.5	3.8	4	2.7	3.4	3.7	2.6	3.2	3.7	2.4	205
210				3.6	3.7		3.2	3.3	3.4	3.3	3.8	4	3.2	3.6	3.8	2.3	3	3.3	2.2	2.8	3.2	2	210
215				3.4	3.5		3	3.1		2.9	3.4	3.6	2.8	3.3	3.5	2	2.6	2.8	1.8	2.5	2.8		215
220				3.3	3.3		2.8	2.9		2.6	3		2.4	2.9	3.1		2.1	2.4		2.1	2.4		220
225				3	3.2		2.7	2.8		2.2	2.6		2.1	2.5			1.9			2			225
230				2.6			2.5	2.6		1.9	2.2			2.2									230
235							2.2	2.4			1.8			1.8									235
240							1.9																240

t_205_51401_00_000 / 51431_00_000 / 51461_00_000

Lifting heights Hauteurs de levage

TVK



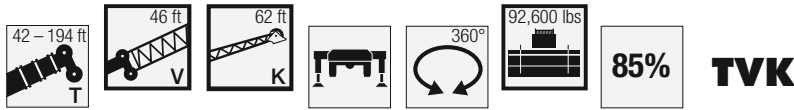
Lifting capacities Forces de levage



Height (ft)	42 ft + 46 ft			156 ft + 46 ft			166 ft + 46 ft			170 ft + 46 ft			180 ft + 46 ft			184 ft + 46 ft			194 ft + 46 ft			Height (ft)	
	0°	20°	40°	0°	20°	40°	0°	20°	40°	35 ft			0°	20°	40°	0°	20°	40°	0°	20°	40°		
14	9.7																					14	
15	9.7																					15	
16	9.7																					16	
17	9.7																					17	
18	9.7																					18	
19	9.7																					19	
20	9.7																					20	
22	9.7																					22	
24	9.7	9.7																				24	
26	9.6	9.7																				26	
28	9.5	9.7																				28	
30	9.5	9.7																				30	
32	9.3	9.6																				32	
34	9.1	9.4	9.1																			34	
36	8.9	9.1	9.1																			36	
38	8.7	8.9	9																			38	
40	8.5	8.6	8.9	9.7																		40	
45	8	8.1	8.3	9.7			8.5			8.8												45	
50	7.4	7.5	7.7	9.7			8.5			8.7			7.6			7.6				6.6		50	
55	7	7.1	7.2	9.7	9.7		8.5			8.7			7.6			7.6				6.6		55	
60	6.5	6.6	6.8	9.6	9.5		8.5	8.5		8.6	8.7		7.6	7.7		7.6				6.6		60	
65	6.2	6.2	6.4	9.4	9.2	8.9	8.4	8.4		8.6	8.6		7.5	7.6		7.6	7.6			6.6	6.6	65	
70	5.8	5.9	6	9.2	8.9	8.6	8.3	8.2	8	8.5	8.5	8.4	7.5	7.6		7.5	7.6			6.6	6.6	70	
75	5.4	5.5	5.7	8.9	8.6	8.4	8.2	8	7.8	8.4	8.3	8.1	7.4	7.6	7.5	7.5	7.6	7.6		6.6	6.6	75	
80	5	5.2	5.4	8.7	8.3	8.1	8	7.7	7.5	8.2	8.1	7.9	7.4	7.4	7.3	7.5	7.6	7.5		6.5	6.6	6.6	80
85	4.6	4.9	5.1	8.4	8	7.8	7.7	7.5	7.3	8.1	7.8	7.6	7.3	7.2	7.1	7.4	7.5	7.3		6.5	6.6	6.6	85
90	4.2	4.5	4.8	8.1	7.8	7.6	7.5	7.2	7.1	7.9	7.6	7.4	7.2	7	6.9	7.3	7.3	7.1		6.5	6.6	6.6	90
95	3.8	4.1	4.3	7.8	7.5	7.3	7.3	7	6.9	7.7	7.4	7.2	7	6.8	6.7	7.2	7.1	7		6.4	6.5	6.4	95
100	3.4	3.7	3.8	7.6	7.3	7.1	7.1	6.8	6.7	7.5	7.1	7	6.9	6.6	6.5	7.1	6.9	6.8		6.4	6.4	6.3	100
105	3.1	3.3	3.3	7.3	7	6.9	6.9	6.6	6.5	7.2	6.9	6.8	6.7	6.5	6.4	7	6.7	6.6		6.4	6.2	6.1	105
110	2.8	2.9	3.2	7.1	6.8	6.7	6.7	6.4	6.3	7	6.7	6.6	6.5	6.3	6.2	6.8	6.6	6.4		6.2	6.1	6	110
115	2.6			6.9	6.6	6.5	6.4	6.2	6.1	6.8	6.5	6.4	6.3	6.1	6	6.6	6.4	6.3		6.1	5.9	5.9	115
120				6.6	6.4	6.3	6.3	6	6	6.6	6.3	6.2	6.2	6	5.9	6.4	6.2	6.1		5.9	5.8	5.7	120
125				6.4	6.2	6.1	6.1	5.9	5.8	6.4	6.2	6.1	6	5.8	5.7	6.2	6.1	6		5.8	5.6	5.6	125
130				6.2	6	5.9	5.9	5.7	5.6	6.2	6	5.9	5.8	5.7	5.6	6.1	5.9	5.8		5.7	5.5	5.5	130
135				6	5.8	5.8	5.7	5.6	5.5	6	5.8	5.8	5.7	5.5	5.5	5.9	5.7	5.7		5.5	5.4	5.3	135
140				5.9	5.7	5.6	5.5	5.4	5.4	5.9	5.7	5.6	5.5	5.4	5.3	5.8	5.6	5.5		5.4	5.2	5.2	140
145				5.7	5.5	5.5	5.4	5.3	5.2	5.7	5.5	5.5	5.4	5.3	5.2	5.6	5.5	5.4		5.3	5.1	5.1	145
150				5.5	5.4	5.4	5.2	5.1	5.1	5.6	5.4	5.4	5.2	5.1	5.1	5.5	5.3	5.3		5.2	5	5	150
155				5.3	5.2	5.2	5	5	5	5.4	5.3	5.2	5	5	5	5.3	5.2	5.2		5	4.9	4.9	155
160				5.1	5.1	5.1	4.8	4.8	4.9	5.3	5.1	5.1	4.9	4.9	4.8	5.2	5.1	5.1		4.9	4.8	4.8	160
165				4.8	4.9	5	4.6	4.7	4.7	5.1	5	5	4.7	4.7	4.7	5	5	5		4.7	4.7	4.7	165
170				4.6	4.7	4.8	4.3	4.5	4.5	4.9	4.9	4.9	4.5	4.6	4.6	4.9	4.8	4.9		4.5	4.6	4.6	170
175				4.4	4.5	4.6	4.1	4.2	4.3	4.7	4.7	4.7	4.3	4.4	4.5	4.5	4.7	4.8		4.3	4.5	4.5	175
180				4.2	4.3	4.4	3.9	4	4.1	4.5	4.5	4.6	4.1	4.2	4.4	4.1	4.5	4.7		3.9	4.2	4.3	180
185				4	4.1	4.1	3.7	3.8	3.9	4.3	4.3	4.4	4	4	4.2	3.6	4	4.3		3.5	3.9	4.1	185
190				3.8	3.9	3.9	3.5	3.6	3.6	4	4.1	4.2	3.8	3.9	3.9	3.2	3.6	3.9		3	3.5	3.7	190
195				3.6	3.7	3.7	3.3	3.4	3.4	3.8	3.9	4	3.5	3.7	3.7	2.8	3.2	3.4		2.6	3	3.3	195
200				3.4	3.5		3.1	3.2	3.2	3.4	3.6	3.7	3.2	3.5	3.5	2.4	2.8	3		2.2	2.6	2.8	200
205				3.2	3.3		2.9	3		2.9	3.3	3.4	2.8	3.1	3.2	1.9	2.3	2.5		1.8	2.2	2.4	205
210				3.1	3.1		2.7	2.8		2.5	2.8		2.4	2.7	2.9		1.9	2.1			1.8	2	210
215				2.9	3		2.5	2.6		2.2	2.4		2	2.3	2.5								215
220				2.6	2.7		2.3	2.4		1.8	2			1.9									220
225				2.2			2	2.2															225
230								1.9															230

t_205_51501_00_000 / 51531_00_000 / 51561_00_000

Lifting capacities Forces de levage

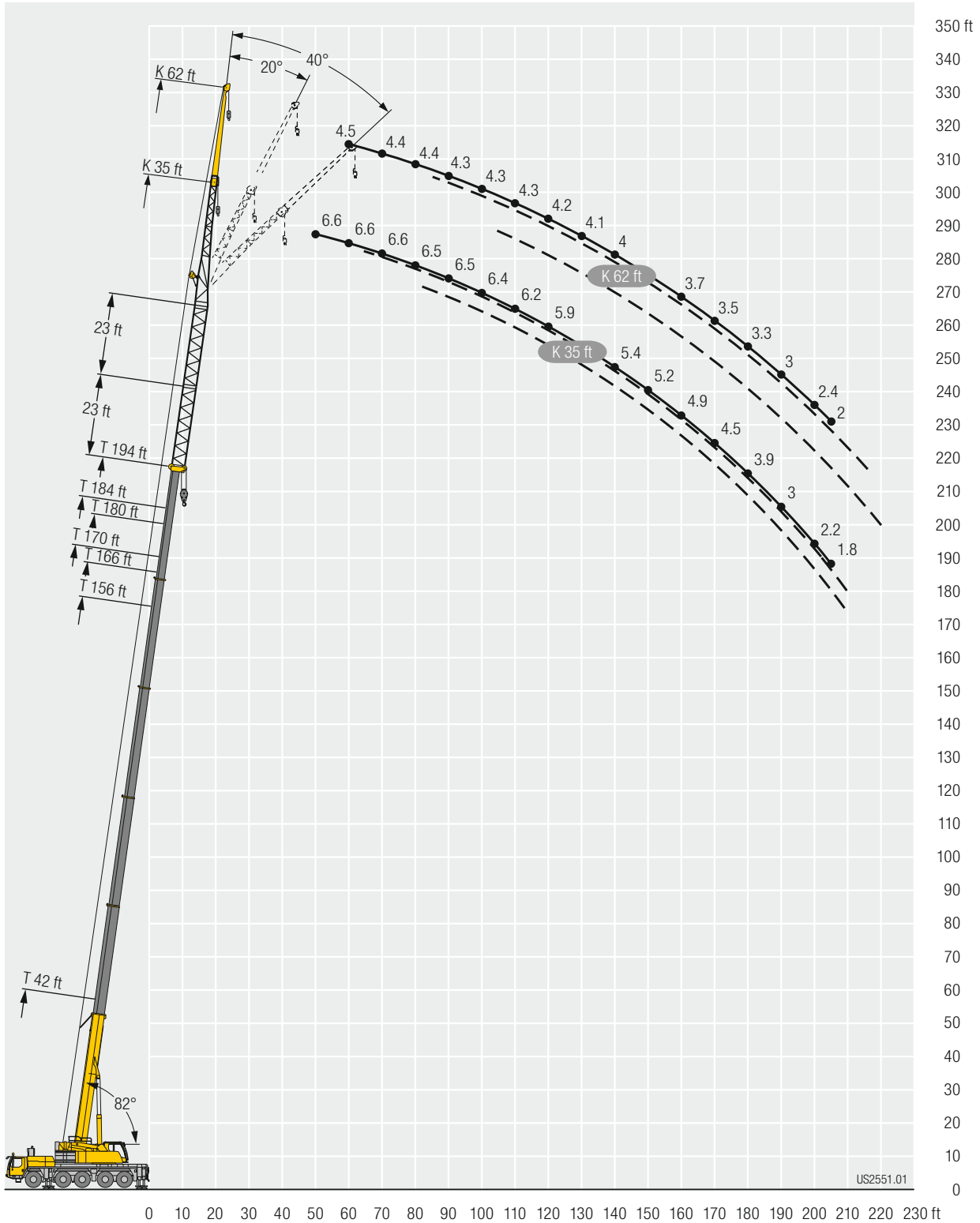


Crane Model	42 ft + 46 ft			156 ft + 46 ft			166 ft + 46 ft			170 ft + 46 ft			180 ft + 46 ft			184 ft + 46 ft			194 ft + 46 ft			Crane Model
	0°	20°	40°	0°	20°	40°	0°	20°	40°	62 ft			0°	20°	40°	0°	20°	40°	0°	20°	40°	
17	6.6																					17
18	6.6																					18
19	6.6																					19
20	6.6																					20
22	6.6																					22
24	6.6																					24
26	6.6																					26
28	6.6																					28
30	6.5																					30
32	6.5																					32
34	6.5																					34
36	6.5																					36
38	6.4	6.6																				38
40	6.4	6.6																				40
45	6.3	6.6		6.6																		45
50	6.1	6.3		6.6			5.8			5.9												50
55	5.8	6	5.9	6.6			5.8			5.9			5.2			5.2						55
60	5.5	5.7	5.9	6.5			5.7			5.9			5.1			5.2			4.5			60
65	5.2	5.4	5.6	6.5			5.7			5.8			5.1			5.1			4.4			65
70	4.9	5.1	5.3	6.4			5.7			5.8			5.1			5.1			4.4			70
75	4.6	4.8	5	6.4	6.5		5.7	5.8		5.7	5.9		5			5.1			4.4			75
80	4.4	4.5	4.7	6.3	6.3		5.6	5.8		5.7	5.9		5	5.2		5	5.2		4.4			80
85	4.1	4.2	4.5	6.3	6.2		5.6	5.7		5.7	5.8		5	5.1		5	5.2		4.4	4.5		85
90	3.9	4	4.2	6.2	6	5.8	5.5	5.6		5.7	5.7		5	5.1		5	5.2		4.3	4.5		90
95	3.7	3.8	4	6.1	5.8	5.6	5.5	5.4	5.3	5.6	5.6	5.4	5	5.1		5	5.1		4.3	4.5		95
100	3.5	3.6	3.8	5.9	5.6	5.4	5.4	5.3	5.1	5.6	5.4	5.3	4.9	5.1	4.9	5	5.1	5.1	4.3	4.5		100
105	3.3	3.4	3.6	5.7	5.4	5.3	5.3	5.1	5	5.5	5.3	5.2	4.9	4.9	4.8	4.9	5	5	4.3	4.5	4.4	105
110	3.1	3.3	3.4	5.5	5.3	5.1	5.2	4.9	4.8	5.4	5.1	5	4.9	4.8	4.7	4.9	4.9	4.9	4.3	4.4	4.4	110
115	2.8	3.1	3.2	5.3	5.1	5	5	4.8	4.7	5.2	5	4.9	4.8	4.7	4.6	4.8	4.8	4.8	4.3	4.4	4.4	115
120	2.5	2.9	3.1	5.2	4.9	4.8	4.8	4.6	4.6	5.1	4.9	4.7	4.7	4.6	4.5	4.7	4.7	4.6	4.2	4.3	4.3	120
125	2.5	2.6	2.8	5	4.8	4.7	4.7	4.5	4.4	4.9	4.7	4.6	4.6	4.4	4.3	4.7	4.6	4.5	4.2	4.2	4.2	125
130	2.5	2.5	2.4	4.8	4.6	4.5	4.5	4.4	4.3	4.8	4.6	4.5	4.4	4.3	4.2	4.6	4.5	4.4	4.1	4.1	4.1	130
135	2.5	2.5	2.2	4.7	4.5	4.4	4.4	4.2	4.2	4.7	4.4	4.4	4.3	4.2	4.1	4.5	4.3	4.3	4.1	4	4	135
140	2.5	2.5		4.5	4.3	4.3	4.3	4.1	4.1	4.5	4.3	4.3	4.2	4.1	4	4.4	4.2	4.2	4	3.9	3.9	140
145				4.4	4.2	4.2	4.2	4	3.9	4.4	4.2	4.1	4.1	3.9	3.9	4.3	4.1	4.1	3.9	3.8	3.8	145
150				4.3	4.1	4	4	3.9	3.8	4.2	4.1	4	4	3.8	3.8	4.2	4	4	3.9	3.7	3.7	150
155				4.1	4	3.9	3.9	3.7	3.7	4.1	4	3.9	3.9	3.7	3.7	4.1	3.9	3.9	3.8	3.6	3.6	155
160				4	3.8	3.8	3.8	3.6	3.6	4	3.9	3.8	3.8	3.6	3.6	3.9	3.8	3.8	3.7	3.6	3.6	160
165				3.9	3.7	3.7	3.7	3.5	3.5	3.9	3.8	3.7	3.7	3.5	3.6	3.8	3.7	3.7	3.6	3.5	3.5	165
170				3.7	3.6	3.6	3.6	3.5	3.5	3.8	3.7	3.6	3.6	3.4	3.5	3.7	3.6	3.6	3.5	3.4	3.4	170
175				3.6	3.5	3.5	3.5	3.3	3.4	3.7	3.6	3.5	3.5	3.4	3.4	3.6	3.5	3.5	3.4	3.3	3.3	175
180				3.5	3.4	3.4	3.3	3.3	3.3	3.6	3.5	3.5	3.4	3.3	3.3	3.6	3.4	3.4	3.3	3.2	3.2	180
185				3.4	3.3	3.4	3.2	3.2	3.2	3.5	3.4	3.4	3.3	3.2	3.2	3.5	3.3	3.4	3.2	3.2	3.2	185
190				3.3	3.3	3.3	3	3.1	3.1	3.4	3.3	3.3	3.2	3.1	3.1	3.3	3.3	3.3	3	3.1	3.1	190
195				3.2	3.2	3.2	2.9	3	3.1	3.3	3.2	3.2	3.1	3.1	3.1	3	3.2	3.2	2.8	3	3	195
200				3.1	3.1	3.1	2.7	2.9	3	3.2	3.1	3.2	2.9	3	3	2.6	3.1	3.2	2.4	2.9	3	200
205				2.9	3	3.1	2.5	2.7	2.9	3.1	3	3.1	2.8	2.9	2.9	2.2	2.9	3.1	2	2.7	2.9	205
210				2.8	2.9	3	2.4	2.6	2.8	2.8	3	3	2.6	2.8	2.8	1.9	2.5	3		2.4	2.8	210
215				2.6	2.7	2.8	2.2	2.4	2.6	2.5	2.9	2.9	2.4	2.6	2.8		2.2	2.6		2	2.5	215
220				2.4	2.5	2.6	2	2.2	2.3	2.2	2.7	2.8	2.1	2.5	2.6		1.8	2.2			2.1	220
225				2.3	2.4		1.8	2	2.1	1.9	2.4	2.6		2.3	2.4			1.8				225
230				2.1	2.2			1.8	1.9		2	2.2		1.9	2.2							230
235				2	2.1										1.8							235
240					1.9																	240

t_205_51601_00_000 / 51631_00_000 / 51661_00_000

Lifting heights Hauteurs de levage

TVK



US2551.01

Lifting capacities Forces de levage



42-197 ft T	42 ft			99 ft			113 ft			127 ft			141 ft			156 ft			T	
	0°	20°	40°	0°	20°	40°	0°	20°	40°	0°	20°	40°	0°	20°	40°	0°	20°	40°		
14	38.7																		14	
15	38.7																		15	
16	38.7	37.6		38.7															16	
17	38.7	37.6		38.7															17	
18	38.6	37.4		38.7															18	
19	38.3	36.8		38.7			38.7												19	
20	37.6	36		38.7			38.7												20	
22	36.3	34.5		38.7			38.7				37.2								22	
24	34.9	33.1		38.7			38.7				37								24	
26	33.5	31.8	25.9	38.7			38.7				36.8			31.8					26	
28	32	30.6	25.3	38.7	33		38.7				36.6			31.7					28	
30	30.5	29.5	24.6	38.7	32.2		38.7	31.9			36.1			31.6			26.5		30	
32	29	28.4	23.9	38.7	31.4		38.7	31.3			35.7			31.3			26.5		32	
34	27.6	27.4	23.3	38.7	30.7		38.4	30.7			35.2	29.7		31.1			26.4		34	
36	26.1	26.5	22.7	38.6	30	24	37.8	30.1			34.7	29.3		30.7			26.3		36	
38	24.6	25.6	22.2	38.3	29.3	23.7	37.1	29.4			34.2	28.7		30.4	27.2		26.1		38	
40	23.4	24.5	21.6	37.5	28.7	23.3	36.4	28.9	23.3		33.7	28.2		30.1	26.9		25.9		40	
45	20.7	21.4	20	35.6	27.3	22.5	34.8	27.6	22.6		32.6	27.1	22.4	29.3	25.9		25.5	24	45	
50	18.6	19.2	18.3	33.6	26	21.8	33.3	26.4	21.9		31.4	26	21.7	28.6	25	21.3	25	23.3	50	
55	16.7	18	17.5	31.4	24.8	21.1	31.9	25.3	21.2		30.4	25.1	21.1	27.8	24.2	20.7	24.5	22.7	20	55
60	15.3	17.1	16.9	29.3	23.8	20.5	30.4	24.3	20.7		29.3	24.2	20.6	27	23.4	20.2	24	22.1	19.6	60
65	14	16.4	6.3	27.2	22.9	19.9	28.8	23.4	20.2		28.3	23.3	20.1	26.3	22.8	19.8	23.5	21.6	19.2	65
70				25.1	22	19.5	27.2	22.5	19.7		27.2	22.6	19.7	25.6	22.1	19.4	22.7	21	18.8	70
75				23.3	21.1	19	25.5	21.8	19.3		26.2	21.9	19.3	24.7	21.4	19	21.8	20.5	18.5	75
80				21.7	20.3	18.6	23.8	21.1	18.9		25	21.2	18.9	23.5	20.9	18.7	20.9	20.1	18.2	80
85				20.3	19.5	18.1	22.3	20.4	18.5		23.7	20.6	18.6	22.4	20.3	18.4	20	19.4	18	85
90				19.1	18.8	17.7	21	19.7	18.1		22.3	20	18.3	21.2	19.8	18.1	18.8	18.6	17.7	90
95				18	18.2	17.3	19.9	19	17.8		21.1	19.5	18	20.1	19.3	17.9	17.7	17.7	17.3	95
100				17	17.6	17.1	18.8	18.5	17.4		19.9	18.9	17.7	18.8	18.8	17.6	16.8	16.8	16.9	100
105				16.1	17.1	16.9	17.8	17.9	17.2		18.8	18.4	17.4	17.3	17.9	17.3	15.9	15.9	16.1	105
110				15.3	16.7	13.9	16.9	17.4	16.9		17.6	17.8	17.1	15.9	16.8	16.9	15	15.1	15.3	110
115				14.5	16.4		16.1	16.9	16.8		16.3	16.9	16.7	14.7	15.4	16	14.1	14.3	14.5	115
120				13.9	16.3		15.4	16.1	16.2		15	15.7	16	13.9	14.2	14.7	13	13.5	13.7	120
125				12.5			14.4	14.8			13.8	14.4	14.6	13.2	13.2	13.5	12	12.7	13	125
130							13.5	13.7			12.6	13.1	13.4	12.4	12.6	12.6	11	11.7	12.1	130
135							12.5	12.7			11.6	12		11.4	12	12.1	10.4	10.7	11.2	135
140							8.1				10.6	11		10.4	11	11.2	10	10	10.2	140
145											9.7	10		9.5	10	10.2	9.5	9.6	9.7	145
150											8.8	9.1		8.7	9.1		8.9	9.1	9.2	150
155														8.2	8.3		8.1	8.5	8.7	155
160														7.9	8		7.4	7.7		160
165														7.7	7.8		6.9	7		165
170																	6.6	6.7		170
175																	6.4	6.4		175
180																	6			180

t_205_51801_00_000

Lifting capacities Forces de levage



TNZK

↙ ↘	166 ft			170 ft			180 ft 35 ft			184 ft			197 ft			↙ ↘
	0°	20°	40°	0°	20°	40°	0°	20°	40°	0°	20°	40°	0°	20°	40°	
32	18.4			19.5												32
34	18.4			19.5												34
36	18.4			19.5			16.3			16.5						36
38	18.4			19.5			16.3			16.5						38
40	18.4			19.5			16.3			16.5			13.9			40
45	18.4			19.5			16.3			16.5			13.9			45
50	18.3	17.9		19.5	19.5		16.3	15.8		16.5			13.9			50
55	18	17.5		19.5	19.5		16.2	15.8		16.5	16.3		13.9	13.6		55
60	17.4	16.8	16.2	19.5	19.5	18.5	16.2	15.8	15.3	16.5	16.3		13.8	13.5		60
65	16.7	16.2	15.6	19.5	19.4	18.3	15.8	15.5	15.1	16.3	16.2	15.5	13.8	13.5	13.1	65
70	16	15.5	15.1	19.3	18.9	18	15.3	15.1	14.7	15.9	15.8	15.4	13.6	13.4	13.1	70
75	15.3	14.9	14.5	18.6	18.2	17.7	14.8	14.5	14.2	15.6	15.3	15	13.4	13.3	13.1	75
80	14.6	14.3	14	17.8	17.4	17.2	14.3	13.9	13.7	15.1	14.8	14.6	13.1	13	13	80
85	13.9	13.6	13.5	16.9	16.6	16.5	13.7	13.4	13.2	14.5	14.2	14.1	12.8	12.6	12.6	85
90	13.3	13	13	16.1	15.8	15.8	13.1	12.9	12.8	13.9	13.7	13.6	12.4	12.2	12.2	90
95	12.6	12.5	12.5	15.4	15.1	15.2	12.5	12.4	12.3	13.3	13.2	13.1	11.9	11.8	11.8	95
100	12	11.9	12	14.7	14.5	14.5	12	11.9	11.8	12.8	12.7	12.7	11.5	11.4	11.4	100
105	11.4	11.4	11.4	14	13.8	13.8	11.4	11.4	11.4	12.2	12.1	12.2	11.1	11	11	105
110	10.8	10.8	10.9	13.3	13.2	13.2	10.9	10.9	11	11.7	11.6	11.7	10.6	10.6	10.6	110
115	10.2	10.3	10.4	12.7	12.6	12.7	10.4	10.5	10.5	11.1	11.1	11.2	10.2	10.2	10.3	115
120	9.7	9.8	10	12	12	12.1	10	10.1	10.1	10.7	10.7	10.8	9.7	9.8	10	120
125	9.2	9.4	9.5	11.4	11.5	11.6	9.6	9.6	9.7	10.3	10.2	10.3	9.3	9.5	9.6	125
130	8.8	8.9	9.1	10.8	10.9	11.1	9.1	9.2	9.4	9.9	9.8	9.9	8.9	9.1	9.3	130
135	8.3	8.5	8.7	10.2	10.4	10.6	8.7	8.9	9	9.5	9.5	9.6	8.5	8.7	8.9	135
140	7.9	8.1	8.3	9.4	9.9	10.1	8.4	8.5	8.6	9.1	9.1	9.2	8.1	8.3	8.5	140
145	7.6	7.7	7.9	8.7	9.2	9.5	8	8.1	8.3	8.6	8.8	8.9	7.7	7.9	8.1	145
150	7.2	7.4	7.5	8.3	8.5	8.8	7.7	7.8	7.9	8.1	8.4	8.6	7.3	7.5	7.7	150
155	6.9	7	7.1	8	8	8.1	7.4	7.5	7.6	7.5	7.9	8.1	6.9	7.2	7.4	155
160	6.6	6.7	6.8	7.7	7.7	7.8	7.1	7.2	7.3	6.9	7.4	7.6	6.6	6.8	7	160
165	6.3	6.4	6.4	7.2	7.4	7.5	6.8	6.9	7	6.3	6.7	7	6	6.4	6.6	165
170	6	6.1		6.7	6.9		6.4	6.6	6.7	5.6	6.1	6.3	5.4	5.9	6.1	170
175	5.7	5.8		6	6.4		6	6.2	6.4	5	5.4	5.6	4.9	5.3	5.6	175
180	5.4	5.5		5.5	5.8		5.5	5.8		4.5	4.8	5	4.3	4.8	4.9	180
185	5.2	5.3		5	5.2		4.9	5.2		3.9	4.3		3.8	4.2	4.4	185
190	4.9			4.5	4.6		4.5	4.7		3.5	3.7		3.3	3.7	3.8	190
195				3.8			4	4.2		3	3.2		2.8	3.2		195
200							3.6	3.7		2.6	2.7		2.4	2.7		200
205							3.1			2.2	2.3		2	2.2		205
210										1.8				1.8		210

t_205_51801_00_000

Lifting capacities Forces de levage

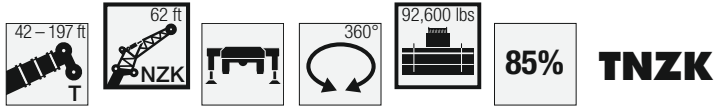


TNZK

	42 ft			99 ft			113 ft			127 ft			141 ft			156 ft			
	0°	20°	40°	0°	20°	40°	0°	20°	40°	0°	20°	40°	0°	20°	40°	0°	20°	40°	
	62 ft																		
17	16.6																		17
18	16.5																		18
19	16.3																		19
20	16.2																		20
22	15.9			14															22
24	15.5			13.9			13.4												24
26	15.2			13.8			13.3												26
28	14.8			13.7			13.2			12.5									28
30	14.4	11.4		13.6			13.1			12.4			11.9						30
32	14	11.4		13.4			13			12.3			11.8						32
34	13.6	11.3		13.2			12.9			12.2			11.8			11.7			34
36	13.2	11.1		13			12.7			12.1			11.7			11.7			36
38	12.9	10.8		12.8			12.6			12			11.6			11.6			38
40	12.5	10.6		12.7			12.4			11.9			11.5			11.5			40
45	11.7	10		12.3	10.2		12.1			11.6			11.3			11.3			45
50	11	9.7	8.7	11.9	9.9		11.7	9.9		11.3	9.8		11			11.1			50
55	10.3	9.3	8.5	11.5	9.7		11.4	9.7		11	9.6		10.8	9.5		10.9			55
60	9.8	9	8.3	11.1	9.4	8.3	11.1	9.4		10.8	9.4		10.6	9.3		10.7	9.4		60
65	9.3	8.7	8.1	10.7	9.2	8.2	10.8	9.2	8.2	10.5	9.2		10.3	9.1		10.4	9.2		65
70	8.8	8.5	8	10.3	9	8.1	10.4	9	8.1	10.2	9	8.1	10.1	9	8.1	10.2	9.1		70
75	8.2	8.3	7.9	10	8.8	8	10.2	8.9	8	10	8.8	8	9.9	8.8	8	10	8.9	8	75
80	7.6	8.1	7.9	9.7	8.6	7.9	9.9	8.7	8	9.8	8.7	7.9	9.7	8.7	7.9	9.8	8.8	7.9	80
85	7.1	8	7.9	9.5	8.5	7.9	9.6	8.5	7.9	9.6	8.5	7.9	9.5	8.5	7.8	9.6	8.6	7.9	85
90	6.7	7.9	7.9	9.2	8.4	7.8	9.4	8.4	7.8	9.4	8.4	7.8	9.3	8.4	7.8	9.4	8.5	7.8	90
95	6.3	7.9		8.9	8.2	7.8	9.2	8.3	7.8	9.2	8.3	7.8	9.2	8.3	7.7	9.3	8.4	7.8	95
100				8.7	8.1	7.7	8.9	8.2	7.7	9	8.2	7.7	9	8.2	7.7	9.1	8.3	7.7	100
105				8.4	8	7.7	8.7	8.1	7.7	8.8	8.1	7.7	8.8	8.1	7.7	9	8.2	7.7	105
110				8.1	8	7.7	8.4	8	7.7	8.7	8	7.7	8.7	8	7.6	8.8	8.1	7.6	110
115				7.8	7.9	7.7	8.2	7.9	7.7	8.5	8	7.7	8.5	8	7.6	8.7	8	7.6	115
120				7.4	7.8	7.7	7.9	7.9	7.7	8.2	7.9	7.7	8.4	7.9	7.6	8.6	7.9	7.6	120
125				7.2	7.7	7.7	7.6	7.8	7.7	7.9	7.8	7.7	8.2	7.9	7.6	8.5	7.9	7.6	125
130				6.9	7.6	7.7	7.4	7.8	7.7	7.7	7.7	7.7	8	7.8	7.6	8.4	7.8	7.6	130
135				6.7	7.4	7.5	7.1	7.7	7.7	7.5	7.6	7.7	7.8	7.7	7.6	8.2	7.8	7.6	135
140				6.5	7.1		6.9	7.6	7.7	7.3	7.5	7.7	7.6	7.7	7.6	8	7.7	7.6	140
145				6.3	6.8		6.7	7.4	7.6	7.1	7.2	7.4	7.4	7.5	7.6	7.8	7.7	7.6	145
150				6.2	6.7		6.5	7.2		6.8	7	7.2	7.2	7.3	7.5	7.6	7.6	7.6	150
155							6.4	7		6.6	6.7	6.9	7	7.1	7.3	7.4	7.5	7.6	155
160							6.3	6.8		6.4	6.5	6.6	6.8	6.9	7.1	7.2	7.4	7.6	160
165							6.2			6.2	6.3		6.6	6.7	6.8	7	7.3	7.5	165
170										5.9	6		6.4	6.5	6.6	6.9	7.1	7.3	170
175										5.7	5.8		6.2	6.3		6.4	6.9	7	175
180										5.6			6	6.1		6	6.6	6.7	180
185													5.8	6		5.4	6		185
190													5.7	5.8		5.1	5.4		190
195													4.9			4.9	5		195
200																4.7	4.8		200
205																4.6	4.7		205
210																2.7			210

t_205_51901_00_000

Lifting capacities Forces de levage

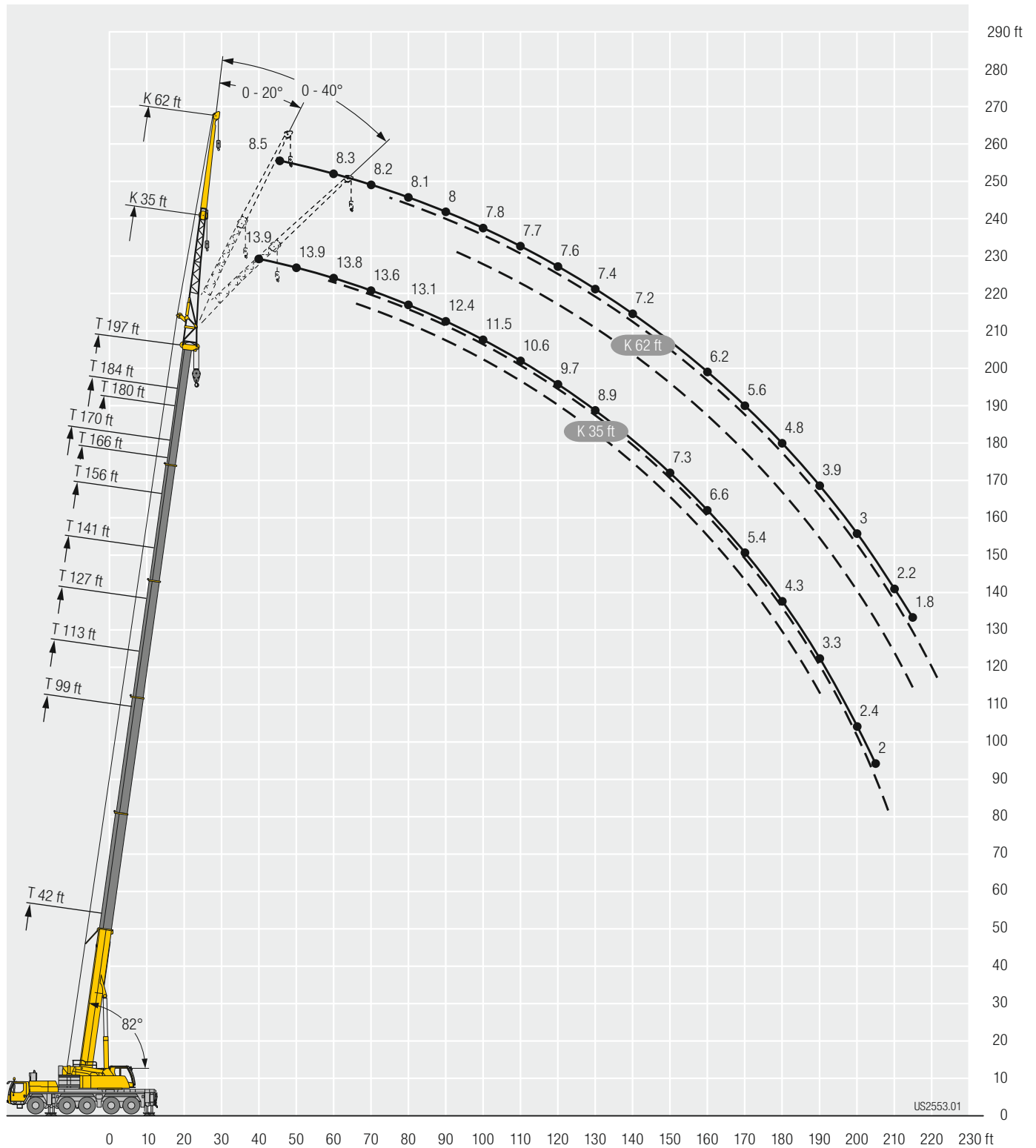


↙ ↘	166 ft			170 ft			180 ft 62 ft			184 ft			197 ft			↙ ↘
	0°	20°	40°	0°	20°	40°	0°	20°	40°	0°	20°	40°	0°	20°	40°	
36	10.1			10.8												36
38	10.1			10.8												38
40	10.1			10.7			9.4									40
45	9.9			10.6			9.4			9.4			8.5			45
50	9.8			10.5			9.3			9.3			8.5			50
55	9.7			10.3			9.2			9.2			8.4			55
60	9.6			10.1	9.2		9.1			9.2			8.3			60
65	9.4	8.7		9.9	9		9	8.5		9.1	8.5		8.3			65
70	9.3	8.6		9.7	8.9		8.9	8.4		8.9	8.4		8.2			70
75	9.2	8.5		9.6	8.8		8.8	8.3		8.8	8.3		8.2	7.8		75
80	9	8.4	7.8	9.4	8.6	7.8	8.7	8.2		8.7	8.2		8.1	7.8		80
85	8.9	8.3	7.7	9.3	8.5	7.8	8.6	8.1	7.6	8.6	8.1	7.6	8	7.7		85
90	8.8	8.2	7.7	9.1	8.4	7.7	8.5	8.1	7.6	8.5	8.1	7.6	8	7.7	7.4	90
95	8.7	8.1	7.7	9	8.3	7.7	8.4	8	7.6	8.5	8	7.6	7.9	7.6	7.4	95
100	8.6	8	7.6	8.9	8.2	7.7	8.3	7.9	7.5	8.4	7.9	7.5	7.8	7.6	7.4	100
105	8.5	8	7.6	8.8	8.1	7.6	8.2	7.8	7.5	8.3	7.9	7.5	7.8	7.5	7.4	105
110	8.4	7.9	7.6	8.7	8	7.6	8.1	7.8	7.5	8.2	7.8	7.5	7.7	7.5	7.4	110
115	8.3	7.8	7.6	8.5	7.9	7.6	8.1	7.7	7.5	8.1	7.7	7.5	7.7	7.5	7.4	115
120	8.2	7.8	7.6	8.4	7.9	7.6	8	7.7	7.5	8	7.7	7.5	7.6	7.4	7.4	120
125	8	7.7	7.6	8.3	7.8	7.6	7.9	7.6	7.5	8	7.7	7.5	7.5	7.4	7.4	125
130	7.7	7.6	7.6	8.2	7.8	7.6	7.8	7.6	7.5	7.9	7.6	7.5	7.4	7.4	7.4	130
135	7.5	7.5	7.6	8.1	7.7	7.6	7.6	7.5	7.5	7.8	7.6	7.5	7.3	7.3	7.4	135
140	7.2	7.4	7.5	8	7.7	7.6	7.4	7.3	7.5	7.6	7.5	7.5	7.2	7.3	7.4	140
145	7	7.2	7.4	7.9	7.6	7.6	7.2	7.2	7.4	7.4	7.4	7.5	7.1	7.2	7.3	145
150	6.7	7	7.2	7.7	7.6	7.6	6.9	7.1	7.2	7.3	7.3	7.5	6.8	7	7.2	150
155	6.4	6.7	7	7.4	7.6	7.6	6.7	6.9	7.1	7.1	7.2	7.5	6.5	6.8	7	155
160	6.1	6.4	6.7	7.1	7.6	7.6	6.4	6.6	6.9	6.9	7	7.3	6.2	6.6	6.8	160
165	5.9	6.1	6.3	6.6	7.3	7.5	6.2	6.4	6.6	6.5	6.8	7	6	6.3	6.6	165
170	5.6	5.8	6	6.3	6.8	7.3	5.9	6.1	6.4	6.1	6.6	6.8	5.6	6.1	6.3	170
175	5.3	5.6	5.7	6.1	6.3	6.7	5.7	5.9	6.1	5.7	6.2	6.6	5.2	5.8	6.1	175
180	5.1	5.3	5.4	5.9	6	6.2	5.5	5.7	5.9	5.2	5.8	6.2	4.8	5.5	5.8	180
185	4.9	5	5.2	5.6	5.8	6	5.3	5.4	5.6	4.7	5.4	5.8	4.4	5.1	5.5	185
190	4.6	4.8	4.9	5.2	5.6	5.8	5	5.2	5.4	4.2	4.9	5.3	3.9	4.6	5.1	190
195	4.4	4.6		4.7	5.2	5.4	4.6	5	5.1	3.7	4.4	4.7	3.5	4.2	4.6	195
200	4.2	4.3		4.3	4.7		4.2	4.7	4.8	3.3	3.9	4.1	3	3.7	4.1	200
205	4	4.1		3.8	4.2		3.7	4.2		2.8	3.4	3.6	2.6	3.3	3.6	205
210	3.9	3.9		3.4	3.8		3.3	3.8		2.4	2.9		2.2	2.8	3.1	210
215	3.7	3.7		3.1	3.3		3	3.3		2.1	2.5		1.8	2.4	2.5	215
220	2			2.7	2.8		2.6	2.9			2.1			2		220
225							2.3	2.5								225
230							2									230

L_205_51901_00_000

Lifting heights Hauteurs de levage

TNZK



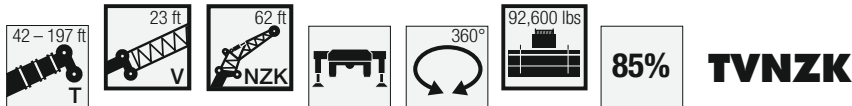
Lifting capacities Forces de levage



42 ft + 23 ft	156 ft + 23 ft			166 ft + 23 ft			170 ft + 23 ft			180 ft + 23 ft			184 ft + 23 ft			197 ft + 23 ft			42 ft + 23 ft			
	0°	20°	40°	0°	20°	40°	0°	20°	40°	35 ft			0°	20°	40°	0°	20°	40°		0°	20°	40°
14	14.6																				14	
15	14.6																				15	
16	14.6																				16	
17	14.5																				17	
18	14.5																				18	
19	14.5																				19	
20	14.5	14.5																			20	
22	14.4	14.4																			22	
24	14.2	14.3																			24	
26	13.8	14																			26	
28	13.4	13.5																			28	
30	13	13.1	12.6																		30	
32	12.6	12.6	12.6																		32	
34	12.2	12.2	12.4																		34	
36	11.8	11.8	12	14.6																	36	
38	11.4	11.4	11.6	14.6			12.6			12.9											38	
40	11	11	11.2	14.6			12.6			12.9			11								40	
45	10.1	10.2	10.4	14.5			12.6			12.9			11			11.2			9.5		45	
50	9.3	9.6	9.7	14.5	14.1		12.6			12.9			11			11.2			9.5		50	
55	8.4	9	9.1	14.3	13.6		12.5	12.3		12.8	12.8		11	11		11.2			9.4		55	
60	7.6	8.4	8.6	14.1	13.1	12.3	12.4	12		12.7	12.5		11	11		11.2	11.2		9.4	9.5	60	
65	6.9	7.5	8	13.6	12.6	11.9	12.2	11.5	11	12.7	12.1	11.5	11	10.9	10.6	11.2	11.2		9.4	9.5	65	
70	6.3	6.8	7.2	13.1	12.1	11.4	11.9	11.1	10.6	12.4	11.7	11.2	10.9	10.7	10.3	11.1	11	10.7	9.4	9.5	9.3	70
75	5.7	6.1	6.4	12.7	11.6	11.1	11.5	10.8	10.3	12.1	11.3	10.8	10.8	10.4	10	11	10.7	10.3	9.4	9.5	9.3	75
80	5.2	5.5	5.7	12.2	11.2	10.7	11.2	10.4	10	11.8	11	10.4	10.6	10.1	9.8	10.8	10.5	10.1	9.3	9.4	9.2	80
85	4.7	5	5	11.8	10.8	10.3	10.8	10.1	9.7	11.4	10.6	10.2	10.3	9.8	9.5	10.7	10.2	9.9	9.3	9.2	9.1	85
90	4.3	4.4		11.3	10.4	10	10.4	9.8	9.5	11.1	10.3	9.9	10	9.6	9.3	10.5	9.9	9.6	9.2	9.1	8.9	90
95				10.8	10.1	9.7	10	9.5	9.2	10.7	10	9.6	9.7	9.4	9.1	10.2	9.7	9.4	9.1	8.9	8.7	95
100				10.4	9.8	9.5	9.6	9.3	9	10.3	9.7	9.4	9.4	9.1	8.9	9.9	9.5	9.2	9	8.7	8.6	100
105				10	9.5	9.3	9.3	9	8.8	10	9.5	9.2	9.1	8.9	8.7	9.7	9.2	9	8.7	8.5	8.4	105
110				9.6	9.3	9	9	8.8	8.6	9.6	9.2	9	8.9	8.7	8.5	9.4	9	8.8	8.5	8.4	8.2	110
115				9.2	9	8.8	8.6	8.5	8.4	9.3	9	8.8	8.6	8.4	8.3	9.1	8.8	8.7	8.3	8.2	8.1	115
120				8.8	8.8	8.7	8.3	8.3	8.2	8.9	8.7	8.6	8.3	8.2	8.2	8.8	8.6	8.5	8	8	7.9	120
125				8.4	8.5	8.4	8	8	8	8.6	8.5	8.4	8	7.9	8	8.5	8.4	8.3	7.8	7.8	7.8	125
130				8	8.2	8.1	7.6	7.7	7.8	8.3	8.3	8.3	7.7	7.7	7.8	8.2	8.2	8.1	7.5	7.5	7.6	130
135				7.7	7.8	7.9	7.3	7.4	7.5	7.9	8	8	7.4	7.4	7.5	7.9	7.9	7.9	7.3	7.3	7.4	135
140				7.4	7.5	7.6	7	7.1	7.2	7.6	7.7	7.8	7.2	7.2	7.3	7.6	7.7	7.7	7	7.1	7.2	140
145				7	7.1	7.2	6.7	6.8	6.9	7.3	7.4	7.5	6.9	7	7.1	7.3	7.4	7.5	6.8	6.8	7	145
150				6.7	6.8	6.9	6.3	6.5	6.6	7	7.1	7.2	6.6	6.7	6.8	7.1	7.1	7.2	6.5	6.6	6.8	150
155				6.4	6.5	6.6	6	6.2	6.3	6.7	6.8	6.9	6.3	6.4	6.6	6.8	6.9	7	6.2	6.4	6.5	155
160				6.1	6.2	6.3	5.8	5.9	6	6.5	6.6	6.6	6.1	6.2	6.3	6.4	6.6	6.7	5.9	6.1	6.2	160
165				5.9	6	6	5.5	5.6	5.7	6.2	6.3	6.4	5.8	5.9	6	6	6.3	6.5	5.6	5.8	5.9	165
170				5.6	5.7	5.8	5.2	5.3	5.4	6	6.1	6.1	5.6	5.7	5.8	5.6	5.9	6.1	5.1	5.5	5.6	170
175				5.4	5.5	5.5	4.9	5.1	5.1	5.8	5.8	5.9	5.3	5.4	5.5	5.1	5.5	5.7	4.7	5.1	5.4	175
180				5.1	5.2		4.7	4.8	4.9	5.5	5.6	5.7	5.1	5.2	5.3	4.5	5	5.2	4.2	4.6	4.9	180
185				4.9	5		4.5	4.6	4.6	5	5.3	5.4	4.9	5	5	4	4.5	4.7	3.8	4.2	4.4	185
190				4.7	4.8		4.3	4.3		4.6	4.8		4.5	4.7	4.8	3.5	3.9	4.1	3.3	3.7	3.9	190
195				4.5	4.6		4	4.1		4.1	4.4		4	4.3	4.4	3.1	3.4	3.6	2.9	3.2	3.5	195
200				4.3	4.4		3.8	3.9		3.6	3.9		3.5	3.8		2.6	2.9	3.1	2.4	2.8	3	200
205				3.3			3.6	3.7		3.2	3.4		3.1	3.4		2.2	2.5		2	2.3	2.5	205
210							3.4	3.5		2.8	2.9		2.7	2.9		1.8	2			1.9	2	210
215							2.5			2.5	2.5		2.3	2.5								215
220													2	2.1								220

t_205_52001_00_000

Lifting capacities Forces de levage

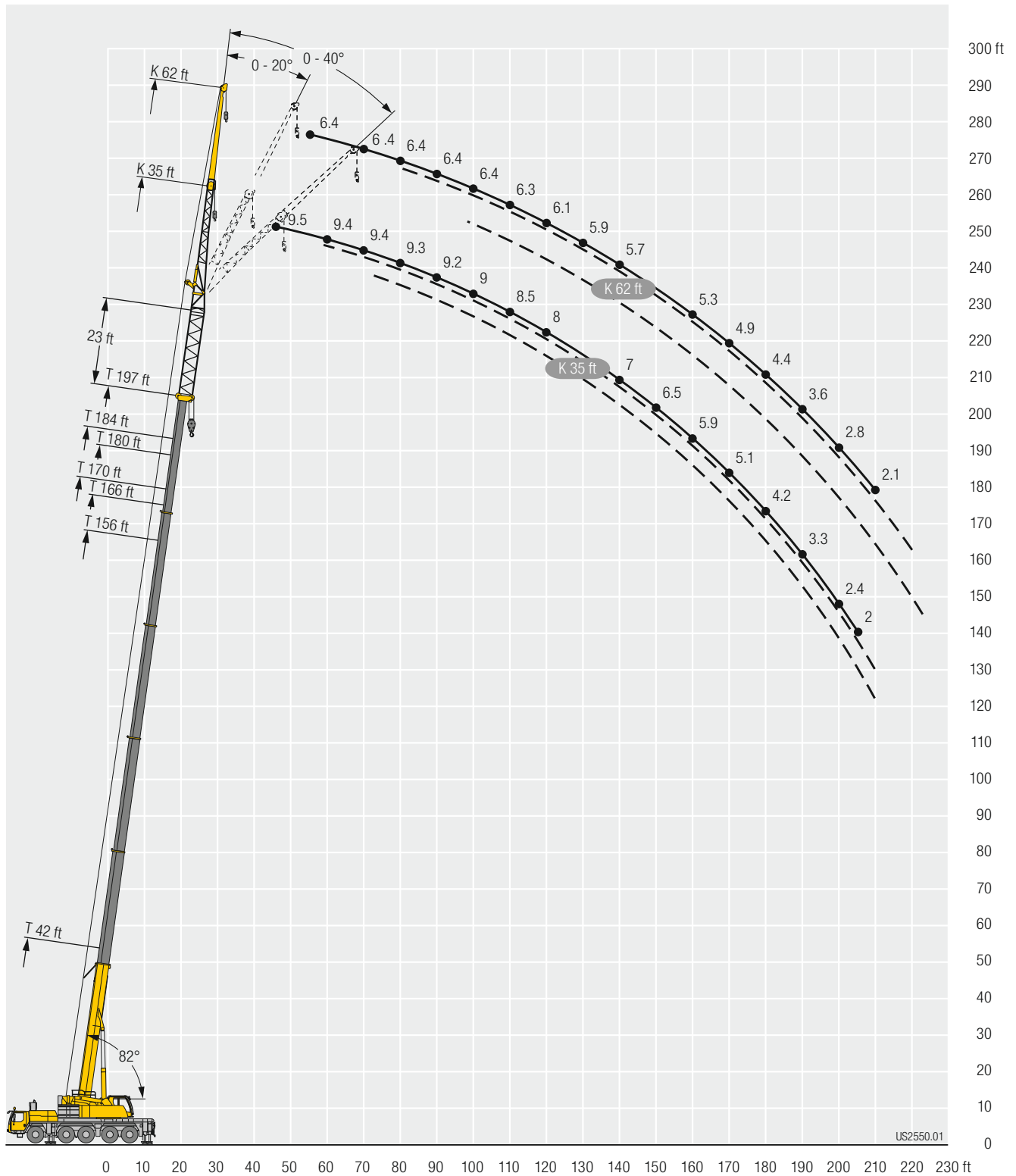


Height (ft)	42 ft + 23 ft			156 ft + 23 ft			166 ft + 23 ft			170 ft + 23 ft			180 ft + 23 ft			184 ft + 23 ft			194 ft + 23 ft			197 ft + 23 ft			Height (ft)	
	62 ft																									
	0°	20°	40°	0°	20°	40°	0°	20°	40°	0°	20°	40°	0°	20°	40°	0°	20°	40°	0°	20°	40°	0°	20°	40°		
17	9.2																								17	
18	9.2																									18
19	9.2																									19
20	9.2																									20
22	9.1																									22
24	9.1																									24
26	9																									26
28	9																									28
30	8.9																									30
32	8.8																									32
34	8.8																									34
36	8.7	8.5																								36
38	8.6	8.5																								38
40	8.5	8.4		9.2																						40
45	8.2	8.3		9.1			8.1			8.3																45
50	7.8	7.9		9.1			8.1			8.3			7.4			7.5										50
55	7.4	7.5	7.6	9			8.1			8.3			7.4			7.5			6.6			6.4				55
60	7	7.1	7.3	9			8.1			8.3			7.4			7.5			6.6			6.4				60
65	6.6	6.7	6.9	8.9	8.4		8.1			8.3			7.4			7.5			6.6			6.4				65
70	6.3	6.3	6.5	8.8	8.4		8.1	7.9		8.2	8		7.4			7.4			6.6			6.4				70
75	6	6	6.2	8.7	8.3		8	7.8		8.2	8		7.3	7.2		7.4	7.4		6.6			6.4				75
80	5.6	5.7	5.9	8.6	8.1		7.9	7.7		8.1	7.9		7.3	7.2		7.4	7.4		6.6	6.4		6.4	6.3			80
85	5.2	5.5	5.6	8.5	7.9	7.5	7.8	7.4		8.1	7.7		7.3	7.1		7.3	7.3		6.6	6.4		6.4	6.3			85
90	4.8	5.2	5.4	8.3	7.7	7.3	7.7	7.3	6.9	8	7.5	7.2	7.2	7.1	6.7	7.3	7.3		6.6	6.4		6.4	6.3			90
95	4.4	4.9	5.2	8	7.5	7.1	7.6	7.1	6.7	7.8	7.3	7	7.2	6.9	6.6	7.3	7.1	6.8	6.5	6.4	6	6.4	6.3			95
100	4	4.6	4.9	7.8	7.2	6.9	7.4	6.9	6.6	7.7	7.1	6.8	7.1	6.7	6.5	7.2	6.9	6.7	6.5	6.4	6.1	6.4	6.3	6		100
105	3.7	4.1	4.4	7.6	7	6.7	7.2	6.7	6.4	7.5	7	6.7	7	6.5	6.3	7.1	6.8	6.5	6.5	6.3	6.1	6.3	6.2	6		105
110	3.4	3.7	3.8	7.4	6.8	6.6	7	6.5	6.3	7.3	6.8	6.5	6.8	6.4	6.2	7	6.6	6.4	6.4	6.2	6	6.3	6.1	6		110
115	3.1	3.3		7.2	6.6	6.4	6.8	6.3	6.1	7.1	6.6	6.4	6.7	6.2	6.1	6.9	6.5	6.2	6.3	6.1	5.9	6.2	6	5.9		115
120				7	6.5	6.2	6.6	6.2	6	6.9	6.4	6.2	6.5	6.1	5.9	6.7	6.3	6.1	6.2	5.9	5.8	6.1	5.9	5.8		120
125				6.8	6.3	6.1	6.4	6	5.9	6.7	6.3	6.1	6.4	6	5.8	6.6	6.2	6	6.1	5.8	5.7	6	5.8	5.7		125
130				6.6	6.1	6	6.3	5.9	5.7	6.6	6.1	6	6.2	5.8	5.7	6.4	6	5.9	6	5.7	5.6	5.9	5.7	5.6		130
135				6.4	6	5.9	6.1	5.7	5.6	6.4	6	5.9	6	5.7	5.6	6.3	5.9	5.8	5.9	5.6	5.5	5.8	5.6	5.5		135
140				6.2	5.9	5.7	5.9	5.6	5.5	6.2	5.9	5.7	5.9	5.6	5.5	6.2	5.8	5.7	5.8	5.5	5.4	5.7	5.5	5.4		140
145				6.1	5.7	5.6	5.8	5.5	5.4	6.1	5.7	5.6	5.8	5.5	5.4	6	5.7	5.6	5.7	5.4	5.3	5.6	5.4	5.3		145
150				5.9	5.6	5.5	5.6	5.4	5.3	5.9	5.6	5.5	5.6	5.3	5.3	5.9	5.6	5.5	5.6	5.3	5.2	5.5	5.3	5.2		150
155				5.7	5.5	5.4	5.4	5.3	5.2	5.8	5.5	5.4	5.4	5.2	5.2	5.7	5.5	5.4	5.4	5.2	5.1	5.4	5.2	5.1		155
160				5.5	5.4	5.3	5.3	5.1	5.1	5.7	5.4	5.3	5.3	5.1	5.1	5.6	5.4	5.3	5.3	5.1	5	5.3	5.1	5		160
165				5.3	5.2	5.2	5	5	5.1	5.5	5.3	5.2	5.1	5	5	5.4	5.3	5.2	5.2	5	5	5.1	5	4.9		165
170				5.1	5.1	5.2	4.8	4.9	5	5.3	5.2	5.2	5	4.9	5	5.3	5.2	5.1	5	4.9	4.9	4.9	4.9	4.9		170
175				4.9	4.9	5.1	4.6	4.8	4.8	5.1	5.1	5.1	4.8	4.8	4.8	5.1	5.1	5.1	4.8	4.8	4.8	4.7	4.8	4.8		175
180				4.7	4.8	4.9	4.4	4.6	4.7	4.9	5	5	4.6	4.7	4.8	4.7	4.9	5	4.6	4.7	4.8	4.4	4.7	4.8		180
185				4.5	4.6	4.8	4.2	4.4	4.5	4.7	4.8	4.9	4.4	4.6	4.7	4.4	4.8	4.9	4.2	4.6	4.7	4	4.6	4.6		185
190				4.3	4.4	4.5	4	4.2	4.3	4.5	4.6	4.8	4.2	4.4	4.6	4	4.6	4.8	3.8	4.4	4.6	3.6	4.3	4.5		190
195				4.1	4.2	4.3	3.8	4	4.1	4.4	4.5	4.6	4	4.2	4.4	3.6	4.2	4.6	3.3	4.1	4.4	3.2	3.9	4.3		195
200				3.9	4	4.1	3.6	3.8	3.9	4.2	4.3	4.4	3.8	4.1	4.2	3.1	3.8	4.2	3	3.7	4.1	2.8	3.5	4		200
205				3.7	3.8		3.4	3.6	3.6	3.8	4.1	4.2	3.5	3.9	4	2.8	3.4	3.7	2.6	3.3	3.7	2.4	3.1	3.5		205
210				3.6	3.7		3.2	3.4	3.4	3.3	3.9	4	3.2	3.6	3.8	2.4	3	3.3	2.2	2.9	3.2	2.1	2.7	3.1		210
215				3.4	3.5		3	3.2		3	3.4	3.6	2.8	3.3	3.5	2	2.6	2.8	1.9	2.5	2.8		2.3	2.7		215
220				3.2	3.3		2.8	3		2.6	3		2.5	2.9	3.1		2.1	2.4		2.1	2.4		1.9	2.3		220
225				3	3.2		2.7	2.8		2.2	2.6		2.1	2.5				1.9			2			1.8		225
230				2.6			2.5	2.6		1.9	2.2		1.8	2.2												230
235							2.2	2.4			1.9			1.8												235
240							1.9																			240

t_205_52101_00_000

Lifting heights Hauteurs de levage

TVNZK



Lifting capacities Forces de levage



Crane Model	42 ft + 46 ft		156 ft + 46 ft			166 ft + 46 ft			170 ft + 46 ft			180 ft + 46 ft			184 ft + 46 ft			194 ft + 46 ft			197 ft + 46 ft			Crane Model	
	35 ft																								
	0°	20°	40°	0°	20°	40°	0°	20°	40°	0°	20°	40°	0°	20°	40°	0°	20°	40°	0°	20°	40°	0°	20°		40°
14	9.8																							14	
15	9.8																								15
16	9.8																								16
17	9.8																								17
18	9.8																								18
19	9.8																								19
20	9.8																								20
22	9.8																								22
24	9.7	9.7																							24
26	9.6	9.7																							26
28	9.5	9.7																							28
30	9.5	9.7																							30
32	9.4	9.6																							32
34	9.2	9.4	9																						34
36	8.9	9.2	9																						36
38	8.7	8.9	9																						38
40	8.5	8.7	8.9	9.8																					40
45	8	8.1	8.3	9.8			8.5			8.8															45
50	7.4	7.6	7.7	9.7			8.5			8.7			7.6			7.5									50
55	7	7.1	7.2	9.6	9.7		8.5			8.7			7.6			7.5			6.6			6.4			55
60	6.5	6.6	6.8	9.5	9.5		8.5	8.5		8.6	8.7		7.5			7.5			6.6			6.4			60
65	6.2	6.3	6.4	9.4	9.2	8.9	8.4	8.4		8.6	8.7		7.5	7.6		7.5	7.6		6.6	6.6		6.4			65
70	5.8	5.9	6	9.2	8.9	8.6	8.3	8.2	8	8.5	8.5	8.4	7.5	7.6		7.5	7.6		6.6	6.6		6.4	6.4		70
75	5.5	5.6	5.7	8.9	8.6	8.4	8.2	8	7.8	8.4	8.3	8.1	7.5	7.5	7.5	7.5	7.6	7.6	6.6	6.6		6.4	6.4		75
80	5	5.3	5.4	8.7	8.3	8.1	8	7.7	7.6	8.2	8.1	7.9	7.4	7.4	7.3	7.5	7.6	7.5	6.5	6.6	6.6	6.4	6.4	6.4	80
85	4.6	4.9	5.1	8.4	8	7.8	7.7	7.5	7.3	8.1	7.8	7.6	7.3	7.2	7.1	7.4	7.4	7.3	6.5	6.6	6.6	6.3	6.4	6.4	85
90	4.2	4.5	4.8	8.1	7.8	7.6	7.5	7.2	7.1	7.9	7.6	7.4	7.2	7	6.9	7.3	7.3	7.1	6.5	6.6	6.6	6.3	6.4	6.4	90
95	3.8	4.1	4.3	7.8	7.5	7.3	7.3	7	6.9	7.7	7.4	7.2	7	6.8	6.7	7.2	7.1	7	6.5	6.5	6.5	6.3	6.3	6.3	95
100	3.4	3.7	3.8	7.6	7.2	7.1	7.1	6.8	6.7	7.4	7.1	7	6.9	6.6	6.5	7.1	6.9	6.8	6.4	6.3	6.3	6.3	6.2	6.2	100
105	3.1	3.3	3.3	7.3	7	6.9	6.9	6.6	6.5	7.2	6.9	6.8	6.7	6.5	6.4	7	6.7	6.6	6.4	6.2	6.1	6.2	6.1	6.1	105
110	2.8	2.9	3.3	7.1	6.8	6.7	6.7	6.4	6.3	7	6.7	6.6	6.5	6.3	6.2	6.8	6.5	6.4	6.2	6.1	6	6.1	6	5.9	110
115	2.6			6.8	6.6	6.5	6.4	6.2	6.1	6.8	6.5	6.4	6.3	6.1	6	6.6	6.4	6.3	6.1	5.9	5.9	6	5.9	5.8	115
120				6.6	6.4	6.3	6.3	6.1	6	6.6	6.3	6.2	6.1	6	5.9	6.4	6.2	6.1	5.9	5.8	5.7	5.9	5.7	5.7	120
125				6.4	6.2	6.1	6.1	5.9	5.8	6.4	6.2	6.1	6	5.8	5.7	6.2	6	5.9	5.8	5.6	5.6	5.7	5.6	5.5	125
130				6.2	6	5.9	5.9	5.7	5.6	6.2	6	5.9	5.8	5.7	5.6	6.1	5.9	5.8	5.6	5.5	5.5	5.6	5.5	5.4	130
135				6	5.8	5.8	5.7	5.6	5.5	6	5.8	5.8	5.7	5.5	5.5	5.9	5.7	5.7	5.5	5.4	5.3	5.5	5.3	5.3	135
140				5.9	5.7	5.6	5.5	5.4	5.4	5.9	5.7	5.6	5.5	5.4	5.3	5.8	5.6	5.5	5.4	5.3	5.2	5.4	5.2	5.2	140
145				5.7	5.5	5.5	5.4	5.3	5.2	5.7	5.5	5.5	5.4	5.2	5.2	5.6	5.5	5.4	5.3	5.1	5.1	5.2	5.1	5.1	145
150				5.5	5.4	5.3	5.2	5.1	5.1	5.6	5.4	5.4	5.2	5.1	5.1	5.5	5.3	5.3	5.1	5	5	5.1	5	5	150
155				5.3	5.2	5.2	5	5	5	5.4	5.2	5.2	5	5	5	5.3	5.2	5.2	5	4.9	4.9	5	4.9	4.8	155
160				5.1	5.1	5.1	4.8	4.8	4.9	5.3	5.1	5.1	4.9	4.8	4.8	5.2	5.1	5.1	4.9	4.8	4.8	4.9	4.8	4.8	160
165				4.8	4.9	5	4.6	4.7	4.7	5.1	5	5	4.7	4.7	4.8	5	5	5	4.7	4.7	4.7	4.7	4.6	4.7	165
170				4.6	4.7	4.8	4.4	4.5	4.5	4.9	4.9	4.9	4.5	4.6	4.7	4.9	4.8	4.9	4.5	4.6	4.6	4.4	4.5	4.6	170
175				4.4	4.5	4.6	4.1	4.3	4.3	4.7	4.7	4.7	4.3	4.4	4.5	4.5	4.7	4.8	4.3	4.5	4.5	4.1	4.4	4.4	175
180				4.2	4.3	4.4	3.9	4	4.1	4.5	4.5	4.6	4.2	4.3	4.4	4.1	4.5	4.6	3.9	4.2	4.3	3.7	4.2	4.2	180
185				4	4.1	4.1	3.7	3.8	3.9	4.3	4.3	4.4	4	4.1	4.2	3.6	4.1	4.3	3.5	3.9	4.1	3.3	3.7	4	185
190				3.8	3.9	3.9	3.5	3.6	3.6	4	4.1	4.2	3.7	3.9	3.9	3.2	3.6	3.9	3	3.5	3.7	2.9	3.3	3.6	190
195				3.6	3.7	3.7	3.3	3.4	3.4	3.8	3.9	4	3.5	3.7	3.7	2.8	3.2	3.4	2.6	3	3.3	2.4	2.9	3.1	195
200				3.4	3.5		3	3.2	3.2	3.4	3.7	3.7	3.2	3.5	3.6	2.4	2.8	3	2.2	2.6	2.8	2	2.4	2.7	200
205				3.2	3.3		2.9	3		3	3.3	3.4	2.8	3.1	3.2	2	2.4	2.5	1.8	2.2	2.4		2	2.3	205
210				3.1	3.1		2.7	2.8		2.6	2.8		2.4	2.8	2.9		1.9	2.1					1.9		210
215				2.9	3		2.5	2.6		2.2	2.4		2	2.4	2.4										215
220				2.6	2.7		2.3	2.4		1.8	2				1.9										220
225				2.3			2.1	2.2																	225
230								1.9																	230

t_205_52201_00_000

Lifting capacities Forces de levage

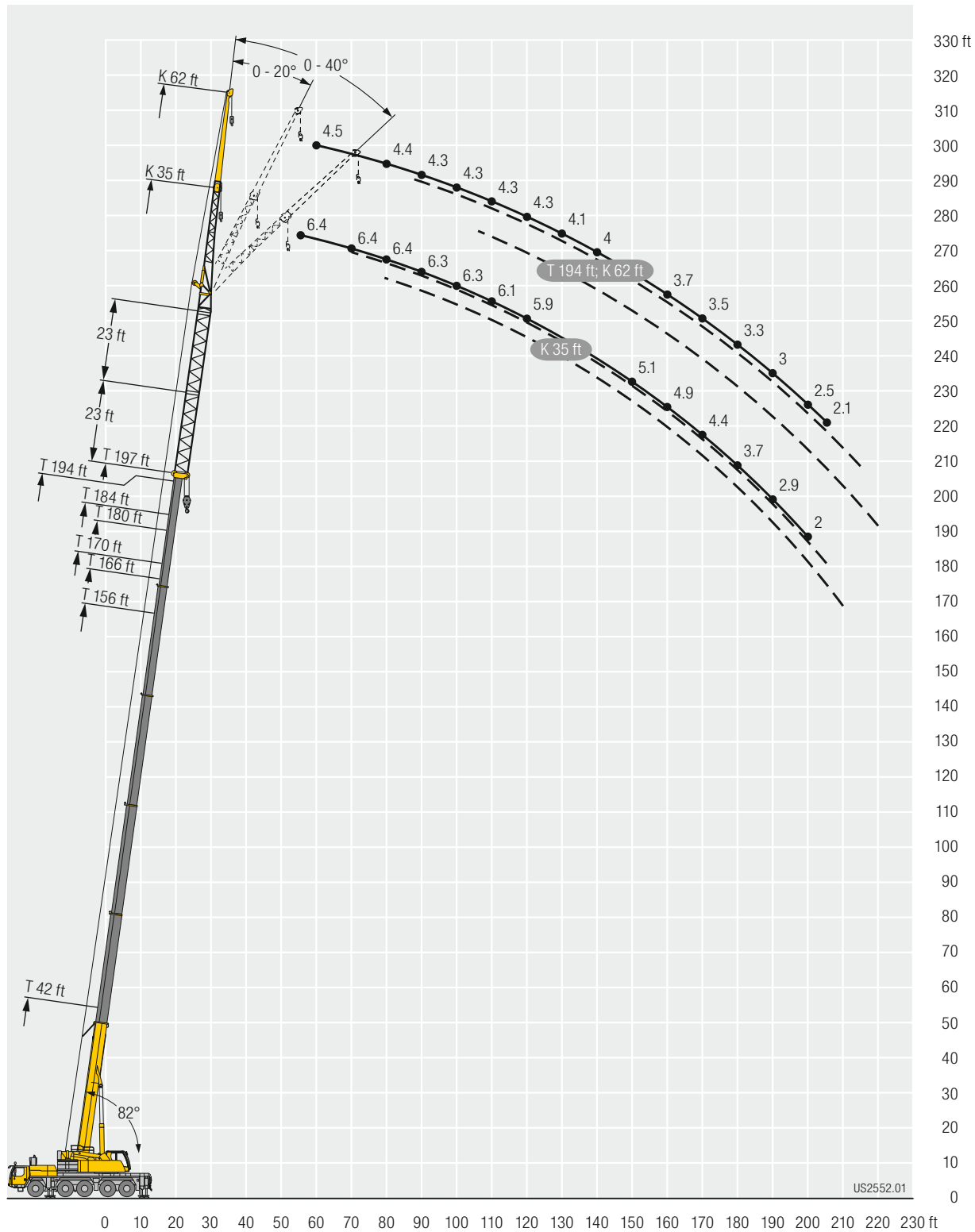


Height (ft)	42 ft + 46 ft			156 ft + 46 ft			166 ft + 46 ft			170 ft + 46 ft			180 ft + 46 ft			184 ft + 46 ft			194 ft + 46 ft			Height (ft)
	0°	20°	40°	0°	20°	40°	0°	20°	40°	62 ft			0°	20°	40°	0°	20°	40°	0°	20°	40°	
18	6.6																					18
19	6.6																					19
20	6.6																					20
22	6.6																					22
24	6.6																					24
26	6.6																					26
28	6.6																					28
30	6.6																					30
32	6.5																					32
34	6.5																					34
36	6.5																					36
38	6.4																					38
40	6.4	6.6																				40
45	6.3	6.6																				45
50	6.1	6.4		6.6			5.8			5.9												50
55	5.8	6.1	5.9	6.6			5.8			5.9			5.2			5.2						55
60	5.5	5.7	5.9	6.6			5.8			5.9			5.1			5.2			4.5			60
65	5.2	5.4	5.7	6.5			5.7			5.8			5.1			5.1			4.4			65
70	4.9	5.1	5.3	6.5			5.7			5.8			5.1			5.1			4.4			70
75	4.6	4.8	5	6.4	6.5		5.7			5.8			5			5.1			4.4			75
80	4.4	4.5	4.7	6.3	6.3		5.7	5.8		5.7	5.9		5	5.2		5	5.2		4.4			80
85	4.1	4.3	4.5	6.2	6.2		5.6	5.7		5.7	5.8		5	5.2		5	5.2		4.4	4.5		85
90	3.9	4	4.2	6.2	6	5.8	5.5	5.6		5.7	5.7		5	5.1		5	5.2		4.3	4.5		90
95	3.7	3.8	4	6	5.8	5.6	5.5	5.4	5.3	5.6	5.6	5.5	5	5.1		5	5.2		4.3	4.5		95
100	3.5	3.6	3.8	5.9	5.6	5.4	5.4	5.2	5.1	5.6	5.4	5.3	4.9	5	4.9	5	5.1	5.1	4.3	4.5		100
105	3.3	3.4	3.6	5.7	5.4	5.3	5.3	5.1	5	5.5	5.3	5.2	4.9	4.9	4.8	5	5	5	4.3	4.5	4.4	105
110	3.1	3.3	3.4	5.5	5.2	5.1	5.2	4.9	4.8	5.4	5.1	5	4.9	4.8	4.7	4.9	4.9	4.9	4.3	4.5	4.4	110
115	2.8	3.1	3.2	5.3	5.1	5	5	4.8	4.7	5.2	5	4.9	4.8	4.7	4.6	4.9	4.8	4.7	4.3	4.4	4.4	115
120	2.5	2.9	3.1	5.2	4.9	4.8	4.8	4.6	4.6	5.1	4.9	4.7	4.7	4.5	4.5	4.8	4.7	4.6	4.3	4.3	4.3	120
125	2.5	2.7	2.8	5	4.8	4.7	4.7	4.5	4.4	4.9	4.7	4.6	4.6	4.4	4.4	4.7	4.6	4.5	4.2	4.2	4.2	125
130	2.5	2.6	2.4	4.8	4.6	4.5	4.5	4.4	4.3	4.8	4.6	4.5	4.4	4.3	4.2	4.6	4.4	4.4	4.1	4.1	4.1	130
135	2.5	2.6	2.2	4.7	4.5	4.4	4.4	4.2	4.2	4.6	4.4	4.4	4.3	4.2	4.1	4.5	4.3	4.3	4.1	4	4	135
140	2.5	2.6		4.5	4.3	4.3	4.3	4.1	4.1	4.5	4.3	4.2	4.2	4	4	4.4	4.2	4.2	4	3.9	3.9	140
145				4.4	4.2	4.1	4.2	4	4	4.4	4.2	4.1	4.1	3.9	3.9	4.3	4.1	4.1	3.9	3.8	3.8	145
150				4.3	4.1	4	4	3.9	3.9	4.2	4.1	4	4	3.8	3.8	4.2	4	4	3.9	3.7	3.7	150
155				4.1	4	3.9	3.9	3.8	3.7	4.1	4	3.9	3.9	3.7	3.7	4	3.9	3.9	3.8	3.6	3.7	155
160				4	3.8	3.8	3.8	3.7	3.6	4	3.9	3.8	3.8	3.6	3.6	3.9	3.8	3.8	3.7	3.6	3.6	160
165				3.9	3.7	3.7	3.7	3.6	3.6	3.9	3.8	3.7	3.7	3.5	3.5	3.8	3.7	3.7	3.6	3.5	3.5	165
170				3.7	3.6	3.6	3.6	3.5	3.5	3.8	3.7	3.6	3.6	3.5	3.5	3.7	3.6	3.6	3.5	3.4	3.4	170
175				3.6	3.5	3.5	3.5	3.4	3.4	3.7	3.5	3.5	3.5	3.4	3.4	3.6	3.5	3.5	3.4	3.3	3.3	175
180				3.5	3.4	3.4	3.3	3.3	3.3	3.6	3.4	3.5	3.4	3.3	3.3	3.6	3.4	3.4	3.3	3.2	3.3	180
185				3.4	3.3	3.4	3.2	3.2	3.2	3.5	3.4	3.4	3.3	3.2	3.2	3.5	3.3	3.4	3.2	3.2	3.2	185
190				3.3	3.3	3.3	3.1	3.1	3.1	3.4	3.3	3.3	3.2	3.1	3.2	3.3	3.3	3.3	3	3.1	3.1	190
195				3.2	3.2	3.2	2.9	3	3.1	3.3	3.2	3.2	3.1	3.1	3.1	3	3.2	3.2	2.8	3	3.1	195
200				3.1	3.1	3.2	2.7	2.9	3	3.2	3.1	3.2	2.9	3	3	2.6	3.1	3.2	2.5	2.9	3	200
205				2.9	3	3.1	2.6	2.7	2.9	3.1	3	3.1	2.8	2.9	2.9	2.2	2.9	3.1	2.1	2.7	2.9	205
210				2.7	2.9	3	2.4	2.6	2.8	2.9	3	3.1	2.6	2.8	2.8	1.9	2.6	3		2.4	2.8	210
215				2.6	2.7	2.8	2.2	2.4	2.6	2.6	2.9	3	2.4	2.6	2.8		2.2	2.6		2.1	2.5	215
220				2.4	2.6	2.6	2	2.2	2.4	2.2	2.7	2.9	2.1	2.5	2.6		1.8	2.2			2.1	220
225				2.3	2.4		1.8	2	2.1	1.9	2.4	2.6		2.3	2.4			1.8				225
230				2.1	2.3			1.9	1.9		2	2.2		1.9	2.2							230
235				2	2.1										1.8							235
240					1.9																	240

t_205_52301_00_000

Lifting heights Hauteurs de levage

TVNZK



Lifting capacities Forces de levage



TK

	42 ft	56 ft	70 ft	84 ft	99 ft	113 ft	127 ft	141 ft	156 ft	166 ft	170 ft	180 ft	184 ft	197 ft	
	9.5 ft														
12	76.2	76.2	76.2												12
13	76.2	76.2	76.2												13
14	76.2	76.2	76.2												14
15	76.2	76.2	76.2	76.2											15
16	76.2	76.2	76.2	76.2											16
17	76.2	76.2	76.2	76.2	76.2										17
18	76.2	76.2	76.2	76.2	76.2										18
19	76.2	76.2	76.2	76.2	76.2										19
20	76.2	76.2	76.2	76.2	76.2	76.2									20
22	76.2	76.2	76.2	76.2	76.2	76.2									22
24	76.2	76.2	76.2	76.2	76.2	76.2	67.4								24
26	76.2	76.2	76.2	76.2	76.2	76.2	66.5								26
28	76.2	76.2	76.2	76.2	76.2	76.2	65.5	52.2							28
30	76.2	76.2	76.2	76.2	76.2	76.2	64.4	51.6							30
32	76.2	76.2	76.2	76.2	76.2	73.2	63.2	50.9	38.7						32
34	75.9	76.2	76.2	76.2	76.2	70.5	61.8	50.2	38.7						34
36	73.9	76.2	76.2	76.2	76.2	67.8	60.2	49.5	38.7	30	34				36
38	69.8	76.2	76.2	76.2	76.2	65.2	58.5	48.7	38.7	29.6	33.7	26			38
40	65.4	76.2	76.2	75.3	73.6	63.2	56.6	47.6	38.7	29.1	33.5	26	26.7		40
45		69.2	69.4	68.8	66.3	59.7	51.9	44.6	37.6	27.6	32.4	25.8	26.6	19.5	45
50		60.4	60.6	60	58.2	56.5	48.1	41.3	35.7	26.1	30.9	25.1	26	19.5	50
55		52.5	53.6	53	51.5	51.1	44.5	38.5	33.5	24.7	29.2	24	25.1	19.5	55
60			47.6	47	48	45.6	41.2	35.8	31.5	23.3	27.7	22.9	24	19.5	60
65			42.5	43.2	43.1	41	38.2	33.3	29.5	22	26.2	21.8	22.9	19.1	65
70			37.7	39.5	38.7	37	34.6	31.2	27.6	20.8	24.9	20.7	21.7	18.4	70
75				35.7	35	33.6	31.9	29.2	25.9	19.6	23.5	19.7	20.7	17.8	75
80				32.5	31.8	30.6	29.4	27.3	24.4	18.4	22.3	18.6	19.7	17.1	80
85				27.4	29	27.8	27.8	25.1	22.9	17.3	21	17.7	18.8	16.4	85
90					26.5	25.3	26.2	22.9	21.6	16.2	19.8	16.7	17.9	15.7	90
95					24.3	23.9	24	21.6	20.4	15.3	18.7	15.8	17.1	15	95
100					20.1	22.9	22.1	20.3	19	14.4	17.7	15	16.3	14.2	100
105						21.4	20.3	18.8	17.4	13.6	16.7	14.2	15.5	13.5	105
110						19.8	18.6	17.8	16.2	12.8	15.8	13.5	14.7	12.8	110
115						13	17.1	17.1	15.4	12.1	14.8	12.8	14	12.2	115
120							15.8	16.1	14.7	11.4	13.7	12.2	13.3	11.5	120
125							14.9	14.9	13.9	10.8	12.6	11.6	12.6	10.9	125
130								13.7	13.3	10.2	12.1	11	11.8	10.3	130
135								12.7	12.6	9.7	11.5	10.5	11	9.8	135
140								11.5	11.7	9.2	11	10	10.2	9.3	140
145									10.8	8.8	10.3	9.6	9.3	8.9	145
150									10	8.4	9.5	9.2	8.5	8.4	150
155									9	8.1	8.7	8.7	7.7	7.9	155
160										7.8	8	8.1	7	7.1	160
165										7.5	7.3	7.4	6.3	6.4	165
170											6.4	6.7	5.7	5.8	170
175												6.2	5.1	5.2	175
180												5.3	4.5	4.6	180
185													3.8	4	185
190														3.5	190
195														3.1	195

t_205_51701_00_000

Lifting heights Hauteurs de levage

TK

